

# Adobe Photoshop and Lightroom Classic for Photographers

Third Edition



## Classroom in a Book<sup>®</sup>

The official training workbook from Adobe

RC Conception

FREE SAMPLE CHAPTER |



# Adobe Photoshop and Lightroom Classic for Photographers

Third Edition



## Classroom in a Book<sup>®</sup>

The official training workbook from Adobe  
RC Concepcion

Adobe® Photoshop® and Lightroom® Classic for Photographers Classroom in a Book®, Third Edition

© 2023 Adobe. All rights reserved.

Adobe Press is an imprint of Pearson Education, Inc. For the latest on Adobe Press books, go to [adobeypress.com](http://adobeypress.com). To report errors, please send a note to [errata@peachpit.com](mailto:errata@peachpit.com). For information regarding permissions, request forms, and the appropriate contacts within the Pearson Education Global Rights & Permissions department, please visit [pearson.com/permissions](http://pearson.com/permissions).

If this guide is distributed with software that includes an end user license agreement, this guide, as well as the software described in it, is furnished under license and may be used or copied only in accordance with the terms of such license. Except as permitted by any such license, no part of this guide may be reproduced, stored in a retrieval system, or transmitted, in any form or by any means, electronic, mechanical, recording, or otherwise, without the prior written permission of Adobe. Please note that the content in this guide is protected under copyright law even if it is not distributed with software that includes an end user license agreement.

The content of this guide is furnished for informational use only, is subject to change without notice, and should not be construed as a commitment by Adobe. Adobe assumes no responsibility or liability for any errors or inaccuracies that may appear in the informational content contained in this guide.

Please remember that existing artwork or images that you may want to include in your project may be protected under copyright law. The unauthorized incorporation of such material into your new work could be a violation of the rights of the copyright owner. Please be sure to obtain any permission required from the copyright owner.

Any references to company names in sample files are for demonstration purposes only and are not intended to refer to any actual organization.

Adobe, the Adobe logo, Adobe Authorized Training Center, Adobe DNG Converter, Adobe RGB (1998), Adobe Press, Adobe Camera Raw, Adobe Certified Associate, Adobe Stock, Creative Cloud, Photoshop, Photoshop Elements, InDesign, Lightroom, Sensei, and Classroom in a Book are either registered trademarks or trademarks of Adobe Systems Incorporated in the United States and/or other countries. Adobe product screenshots reprinted with permission from Adobe.

Apple, iOS, macOS, Macintosh, and Safari are trademarks of Apple, registered in the U.S. and other countries. Android, Google, and YouTube are registered trademarks of Google LLC. Microsoft and Windows are either registered trademarks or trademarks of Microsoft Corporation in the U.S. and/or other countries. All other trademarks are the property of their respective owners.

Unless otherwise indicated herein, any third-party trademarks that may appear in this work are the property of their respective owners and any references to third-party trademarks, logos, or other trade dress are for demonstrative or descriptive purposes only. Such references are not intended to imply any sponsorship, endorsement, authorization, or promotion of Pearson Education, Inc. products by the owners of such marks, or any relationship between the owner and Pearson Education, Inc. or its affiliates, authors, licensees, or distributors.

Adobe Inc., 345 Park Avenue, San Jose, California 95110-2704, USA

Notice to U.S. Government End Users. The Software and Documentation are “Commercial Items,” as that term is defined at 48 C.F.R. §2.101, consisting of “Commercial Computer Software” and “Commercial Computer Software Documentation,” as such terms are used in 48 C.F.R. §12.212 or 48 C.F.R. §227.7202, as applicable. Consistent with 48 C.F.R. §12.212 or 48 C.F.R. §§227.7202-1 through 227.7202-4, as applicable, the Commercial Computer Software and Commercial Computer Software Documentation are being licensed to U.S. Government end users (a) only as Commercial Items and (b) with only those rights as are granted to all other end users pursuant to the terms and conditions herein. Unpublished-rights reserved under the copyright laws of the United States. Adobe Inc., 345 Park Avenue, San Jose, CA 95110-2704, USA. For U.S. Government End Users, Adobe agrees to comply with all applicable equal opportunity laws including, if appropriate, the provisions of Executive Order 11246, as amended, Section 402 of the Vietnam Era Veterans Readjustment Assistance Act of 1974 (38 USC 4212), and Section 503 of the Rehabilitation Act of 1973, as amended, and the regulations at 41 CFR Parts 60-1 through 60-60, 60-250, and 60-741. The affirmative action clause and regulations contained in the preceding sentence shall be incorporated by reference.

Cover Illustration: Omi Kim, Osaka, Japan

ISBN-13: 978-0-13-765293-8

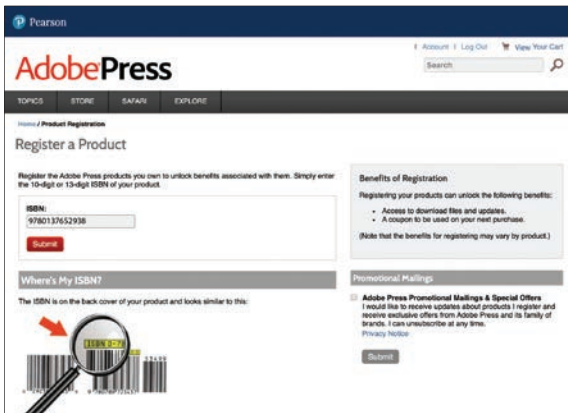
ISBN-10: 0-13-765293-3

ScoutAutomatedPrintCode

# WHERE ARE THE LESSON FILES?

Purchase of this Classroom in a Book in any format gives you access to the lesson files you'll need to complete the exercises in the book.

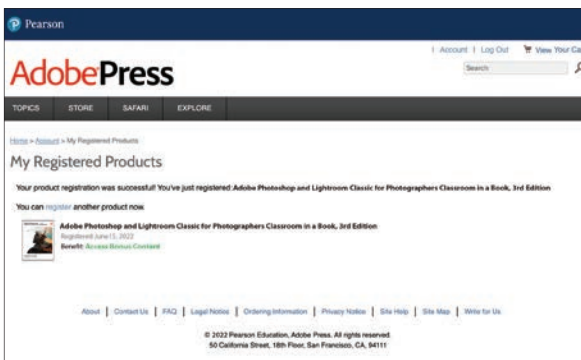
- 1 Go to [adobepress.com/PhotoshopLightroomCIB2022](https://adobepress.com/PhotoshopLightroomCIB2022).
- 2 Sign in or create a new account.
- 3 Click Submit.



The screenshot shows the 'Register a Product' page on the Adobe Press website. It features a search bar at the top right and navigation tabs for 'TOPICS', 'STORE', 'SAFARI', and 'EXPLORE'. The main heading is 'Register a Product'. Below this, there is a text prompt: 'Register the Adobe Press products you own to unlock benefits associated with them. Simply enter the 10-digit or 13-digit ISBN of your product.' A text input field contains the ISBN '9780137652938' and a red 'Submit' button is positioned below it. To the right, a 'Benefits of Registration' section lists: 'Access to download files and updates.' and 'A coupon to be used on your next purchase.' Below that, a 'Promotional Mailings' section has a checkbox for 'Adobe Press Promotional Mailings & Special Offers' and a 'Submit' button. At the bottom left, a section titled 'Where's My ISBN?' includes a magnifying glass icon over a barcode image, with a red arrow pointing to the ISBN number on the barcode.

● **Note:** If you encounter problems registering your product or accessing the lesson files or web edition, go to [adobepress.com/support](https://adobepress.com/support) for assistance.

- 4 Answer the questions as proof of purchase.
- 5 The lesson files can be accessed through the Registered Products tab on your Account page.
- 6 Click the Access Bonus Content link below the title of your product to proceed to the download page. Click the lesson file links to download them to your computer.



The screenshot shows the 'My Registered Products' page on the Adobe Press website. It features a search bar at the top right and navigation tabs for 'TOPICS', 'STORE', 'SAFARI', and 'EXPLORE'. The main heading is 'My Registered Products'. Below this, there is a text prompt: 'Your product registration was successful! You've just registered Adobe Photoshop and Lightroom Classic for Photographers Classroom in a Book, 3rd Edition. You can register another product now.' A product card is displayed with the title 'Adobe Photoshop and Lightroom Classic for Photographers Classroom in a Book, 3rd Edition', the registration date 'Registered June 15, 2022', and a 'Benefits: Access Bonus Content' link. At the bottom, there are links for 'About', 'Contact Us', 'FAQ', 'Legal Notice', 'Ordering Information', 'Privacy Notice', 'Site Help', 'Site Map', and 'Write for Us'. The footer contains the copyright information: '© 2022 Pearson Education, Adobe Press. All rights reserved. 50 California Street, 18th Floor, San Francisco, CA, 94111'.

● **Note:** If you purchased a digital product directly from [adobepress.com](https://adobepress.com) or [peachpit.com](https://peachpit.com), your product will already be registered. However, you still need to follow the registration steps and answer the proof of purchase question before the Access Bonus Content link will appear under the product on your Registered Products tab.

# CONTENTS

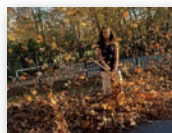
|   |          |
|---|----------|
| <b>GETTING STARTED</b>                                    | <b>1</b> |
| About Classroom in a Book.....                            | 1        |
| Windows vs. macOS instructions .....                      | 2        |
| Prerequisites .....                                       | 2        |
| Online content .....                                      | 3        |
| Installing Lightroom and Photoshop .....                  | 4        |
| Why use both Lightroom and Photoshop?.....                | 4        |
| Creating a Lightroom catalog for use with this book ..... | 12       |
| Getting help.....   | 14       |
| Adobe Authorized Training Centers.....                    | 15       |

|          |   |           |
|----------|---|-----------|
| <b>1</b> | <b>IMPORTING AND MANAGING PHOTOS IN LIGHTROOM</b> | <b>16</b> |
|----------|---|-----------|



|   |    |
|---|----|
| Preparing for this lesson .....                 | 18 |
| Storing your photographs (you need a plan)..... | 18 |
| Folders store; they do not organize.....        | 19 |
| Importing photos into a Lightroom catalog.....  | 20 |
| Importing photos from a memory card.....        | 21 |
| Renaming files and folders during import .....  | 24 |
| Importing photos from a hard drive .....        | 26 |
| Using the Library module .....                  | 30 |
| Meeting the panels .....                        | 30 |
| Customizing your view.....                      | 35 |
| Renaming your photos.....                       | 40 |
| Review questions.....                           | 42 |
| Review answers.....                             | 43 |

|          |  |           |
|----------|--|-----------|
| <b>2</b> | <b>ORGANIZING YOUR PHOTOS INTO LIGHTROOM COLLECTIONS</b> | <b>44</b> |
|----------|--|-----------|



|                                       |    |
|---------------------------------------|----|
| Preparing for this lesson .....       | 46 |
| Iterative culling: My workflow .....  | 46 |
| Adding flag markers in Lightroom..... | 47 |

|   |    |
|---|----|
| What is a collection? .....                       | 49 |
| Creating collections from folders of images ..... | 50 |
| Creating collection sets .....                    | 52 |
| Sample organizational sets .....                  | 54 |
| What is a smart collection? .....                 | 55 |
| What is the Quick Collection? .....               | 56 |
| What is a target collection? .....                | 56 |
| Sharing your collections online .....             | 57 |
| Adding star ratings and color labels .....        | 58 |
| Adding keywords .....                             | 59 |
| Other ways to apply (and delete) keywords .....   | 61 |
| Review questions .....                            | 62 |
| Review answers .....                              | 63 |

### **3 USING THE LIGHTROOM DEVELOP MODULE FOR GLOBAL ADJUSTMENTS**

**64**



|  |    |
|--|----|
| Preparing for this lesson .....            | 66 |
| Using the Develop module .....             | 67 |
| Developing your pictures .....             | 68 |
| What are camera profiles? .....            | 68 |
| The new profiles in Lightroom .....        | 68 |
| Setting your picture's white balance ..... | 71 |
| Setting exposure and contrast .....        | 72 |
| Adjusting shadows and highlights .....     | 73 |
| Adjusting whites and blacks .....          | 77 |
| Clarity, vibrance, and saturation .....    | 79 |
| Adding detail to your images .....         | 80 |
| Cropping your image .....                  | 85 |
| Lens corrections and transformations ..... | 86 |
| Using virtual copies for variations .....  | 87 |
| Using snapshots for variations .....       | 89 |
| Syncing changes to multiple photos .....   | 90 |
| Review questions .....                     | 93 |
| Review answers .....                       | 93 |

**4 USING THE LIGHTROOM DEVELOP MODULE FOR LOCAL AND CREATIVE ADJUSTMENTS 94**



Preparing for this lesson ..... 96

A new way to make selective adjustments ..... 97

Using the Linear Gradient tool ..... 99

Using the Radial Gradient tool..... 103

Adding to existing masks ..... 104

Using the Masking Brush tool ..... 106

Adding a second mask ..... 107

New tools: Select Sky and Select Subject ..... 109

Exploring Select Subject ..... 110

Color and Luminance Range masking ..... 112

Luminance Range masks..... 114

Adding and subtracting masks ..... 114

Removing distractions with the Spot Removal tool..... 116

Removing sensor spots from your images ..... 116

Removing objects from photos..... 119

Creative color and black-and-white effects..... 120

Converting a color photo to black and white..... 120

Color Grading in Lightroom ..... 122

The Effects panel..... 127

Review questions..... 130

Review answers..... 131

**5 MAKE YOUR PORTRAITS LOOK THEIR BEST 132**



Preparing for this lesson ..... 134

Lightening teeth..... 135

Lightening the whites of eyes ..... 137

Enhancing irises ..... 138

Skin softening with the Texture Brush ..... 139

Removing flyaway hairs with the Spot Removal tool ..... 142

Reducing wrinkles beneath eyes ..... 143

Putting it all together: Start to finish..... 144

Review questions..... 147

Review answers..... 147

**6 LIGHTROOM–PHOTOSHOP ROUND TRIP WORKFLOW 148**



Preparing for this lesson .....150

Setting up Lightroom and Photoshop for smooth integration .....150

Configuring the Lightroom External Editing preferences ..... 151

Configuring the Photoshop color settings ..... 155

Configuring the Photoshop Maximize Compatibility preference.....156

Keeping Lightroom and Camera Raw in sync ..... 157

Sending a raw file from Lightroom to Photoshop .....159

Sending the photo back to Lightroom.....162

Reopening the PSD for more editing in Photoshop.....163

Adding final adjustments to the PSD in Lightroom .....164

Sending a JPEG or TIFF from Lightroom to Photoshop.....165

Sending a photo from Lightroom to Photoshop as a Smart Object.....169

Working with snapshots in Lightroom and Photoshop ....169

Review questions.....174

Review answers.....175

**7 LIGHTROOM TO PHOTOSHOP FOR SELECTING AND MASKING 176**



Preparing for this lesson.....178

Selection basics .....179

Selecting by shape.....180

Using the Rectangular Marquee tool .....180

Angled selections with the Polygonal Lasso tool .....184

Adding and subtracting selections with the Lasso tool ....187

Using the Select Subject command.....190

Using the Select Object command .....193



Selecting hair using the Select And Mask workspace .....196

Putting it all together: Pet portrait.....201

Review questions.....204

Review answers.....205



|  |   |            |
|--|---|------------|
| <b>8</b>   | <b>LIGHTROOM TO PHOTOSHOP FOR RETOUCHING</b>                                  | <b>206</b> |
|   | Preparing for this lesson .....   | 208        |
|  | Removing unwanted content in Photoshop .....                                  | 209        |
|  | Using the Spot Healing Brush and Healing Brush tools .....                    | 209        |
|  | Using the Clone Stamp tool .....  | 212        |
|  | Using the Patch tool .....  | 214        |
|  | Using Content-Aware Fill .....  | 216        |
|  | The Content-Aware Fill workspace and the<br>Content-Aware Scale command ..... | 218        |
|  | Using the Content-Aware Fill workspace .....                                  | 218        |
|  | Using the Content-Aware Scale command .....                                   | 222        |
|  | Skin retouching and body sculpting in Photoshop .....                         | 225        |
|  | Smoothing skin realistically in Photoshop .....                               | 226        |
|  | Camera Raw as a filter for skin texture .....                                 | 228        |
|  | Using a neural filter for skin smoothing .....                                | 230        |
|  | Sculpting a portrait using the Photoshop Liquify filter .....                 | 230        |
|  | Using the Liquify tool for landscape images .....                             | 235        |
|  | Review questions .....  | 236        |
|  | Review answers .....  | 237        |
| <b>9</b>   | <b>LIGHTROOM TO PHOTOSHOP FOR SPECIAL EFFECTS</b>                             | <b>238</b> |
|  | Preparing for this lesson .....   | 240        |
|  | Artistic portrait treatments .....  | 241        |
|  | From portrait to painting .....   | 244        |
|  | Adding the Mixer Brush .....  | 245        |
|  | From portrait to stylistic sketch .....                                       | 248        |
|  | Adding creative blur effects .....  | 250        |
|  | Accentuating a focal point with the Iris Blur filter .....                    | 250        |
|  | Creating a tilt-shift blur effect .....                                       | 252        |
|  | Adding blur for motion .....  | 254        |
|  | Adding motion to a subject .....  | 256        |
|  | Putting it all together: Instagram carousel .....                             | 259        |
|  | Replacing a sky using Sky Replacement in Photoshop .....                      | 259        |
|  | Extending a canvas with Content-Aware Scale .....                             | 260        |
|  | Review questions .....  | 265        |
|  | Review answers .....  | 265        |

**10 LIGHTROOM TO PHOTOSHOP FOR COMBINING PHOTOS 266**



Preparing for this lesson .....268

Combining photos for texture and collage effects.....269

Adding texture to a photo using another photo.....269

Fading photos together using a soft brush  
and a layer mask.....272

Fading photos together using a gradient mask .....275

Grouping photos together using layer styles.....278

Combining photos into the perfect group shot .....282

Making HDR images .....284

Merging to HDR in Lightroom.....285

Headless mode for HDR.....287

Exaggerating edge contrast in Photoshop .....287

Making panoramas .....289

Merging to a panorama in Lightroom .....289

Headless mode for panoramas.....291

Creating HDR panoramas .....291

Review questions.....294

Review answers.....295

**11 EXPORTING AND SHOWING OFF YOUR WORK 296**



Preparing for this lesson .....298

Setting up an identity plate .....299

Creating a watermark .....300

Emailing photos .....301

Exporting photos.....303

Exporting multiple presets.....308

Creating prints.....308

Books, slideshows, and web galleries .....312

Next steps.....315

Review questions.....317

Review answers.....317

**INDEX 318**

*This page intentionally left blank*

# 2

## ORGANIZING YOUR PHOTOS INTO LIGHTROOM COLLECTIONS

### Lesson overview

This lesson covers how to sort through your images to separate the ones that are keepers (that you will print, share, or put in your portfolio) and ones you can discard or review later. You'll start by going through a specific workflow for culling images using flags in Adobe Photoshop Lightroom Classic, and walk through the process of sorting those images into discrete collections. From there, you'll learn how to set up a hierarchical structure using collection sets.

In this lesson, you'll learn how to:

- Employ color labels in your image.
- Use a star system to rank your images.
- Filter images based on flags, colors, or other metadata.
- Set up smart collections for specialized tasks.
- Set up a target collection for quick organization.
- Share and get feedback about your published online collections.



This lesson will take about 1½ hours to complete. To get the lesson files used in this chapter, download them from the web page for this book at [adobepress.com/PhotoshopLightroomCIB2022](http://adobepress.com/PhotoshopLightroomCIB2022). For more information, see “Accessing the lesson files and Web Edition” in the Getting Started section at the beginning of this book.



The Lightroom Library module makes it easy to assess and manage your ever-growing image catalog.

## Preparing for this lesson

Before diving into the content of this lesson, make sure you do the following:

- 1 Follow the instructions in the Getting Started section at the beginning of this book for setting up an LPCIB folder on your computer, downloading the lesson files to that folder, and creating an LPCIB catalog in Lightroom.
- 2 Download the Lesson 02 folder from your Account page at [adobe.com](https://adobe.com) to *username/Documents/LPCIB/Lessons*.
- 3 Launch Lightroom, and open the LPCIB catalog you created by choosing File > Open Catalog and navigating to it. Alternatively, you can choose File > Open Recent > LPCIB Catalog.
- 4 Add the Lesson 2 files to the LPCIB catalog using the steps in the Lesson 1 section “Importing photos from a hard drive.” Lightroom may ask if you want to enable address lookup. You can dismiss this notification.

## Iterative culling: My workflow

The single most tedious task after a photo shoot is sorting bad pictures from good so that you can come up with a plan for editing. This process is known as **culling** and is one of the most important steps you can do in Lightroom.

I spend a lot of time talking to people around the world about their use of Lightroom, and this seems to be the part of the process people struggle with the most. To fix that, I want to share the technique I use when working with my photos. This is something I learned a long time ago, back in my days as a high school teacher, and I call it the “iterative edit.”

If you have to take a timed test of multiple choice questions, the best strategy for completing it is to go through the test as fast as you can, answering all the questions that you know you have correct. When you get to a question that you do not know the answer to, the strategy is to skip it. By doing this, you can quickly complete the answers you do know, leaving you more time to work on the ones you don’t and allowing you to pick up context clues from your completed answers.

Now, let’s apply this idea to our photography. If a shoot contains 200 pictures, there is a good chance that a large number of those pictures are either really good or really bad. By “bad” I mean things like: out of focus, the eyes are closed in a portrait, or you cut off someone’s head. These are things that we immediately know are problems, and we would never spend any time working on these images. Conversely, with the good pictures, we’re not trying to pick the very best picture out of the very best series. We’re looking for pictures that are okay: it’s exposed, it’s composed, it has the subject. Ranking them is something we’ll do later.

## Adding flag markers in Lightroom

Let's begin by going into the Lesson 01 folder in the Library module's Folders panel in Lightroom. This shows a grid of images that we can start culling. As we learned in the previous lesson, we can get rid of the panels on all four sides by pressing Shift+Tab. We can also black out the interface by pressing the L key twice to go into Lights Out mode. This will get rid of all of the distractions in the Lightroom interface that take us away from doing the job at hand—culling.



You have a couple of options with each image. If it is a picture that you think is worth keeping, press P on the keyboard to mark it as a pick. If you believe the picture is completely off, press X to mark it as rejected.

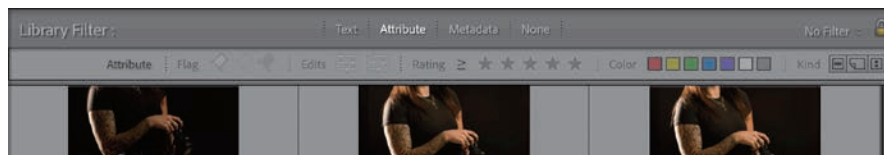
If you have to think for more than half a second about whether this picture is effective, press the Right Arrow key on the keyboard to skip the picture and go on to the next one. Remember your qualifications for bad and good. Do not spend more than a second thinking through these pictures. The goal is to get rid of the pictures that you know will not work.

If you click one of the flags and the picture doesn't advance, choose Photo > Auto Advance. Should you mistakenly add the wrong flag to one of the pictures, press the Left Arrow key to go back to the picture in question, and then press the U key. Pressing U unflags the picture.

Once you finish this process, you should have your pictures sorted into three different types of images: those that you know won't work (the bad images), those that you want to consider for ranking, and those that you have not gone through yet. Lightroom has a way to filter all of these pictures: the Library Filter bar at the

top of the center preview area. The Library Filter bar has the following options to help you find specific images:

- Text mode allows you to filter your Lightroom catalog for specific words. These words can be in the filename, title, caption, or any of the metadata embedded in the image.
- Attribute mode lets you filter out images based on flag status, star rating, color label, or virtual copy status, as shown below.



- Metadata mode lets you sort your images using a host of different metadata items Lightroom has compiled from your images. This is an extremely powerful way of filtering, but outside the scope of this book.

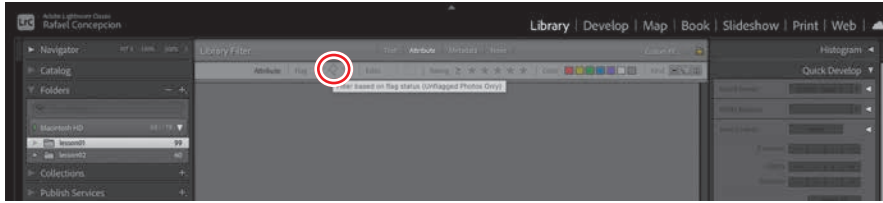
Click the Attribute tab, then select one of the Flag options (pick, unflagged, or rejected) to see only those specific images appear in the preview area. The filter icons are not exclusive—you don't have to select only Reject flags or Pick flags. If you click both in the Attribute filter, Lightroom shows you both sets of images in Grid view.



At the top right of the Filmstrip panel, there are similar Filter options (if you don't see the flag icons next to the Filter menu, choose Flagged from the menu). At the top left of the Filmstrip panel, you see the number of images in that folder or collection that contain a specific flag.



At this point, the images that are the most important part of the process are the unflagged ones. Click the Unflagged Photos Only icon, hide the panels (press Shift+Tab), go into Lights Out mode (press L twice), and repeat the culling process until nothing appears in the preview area.



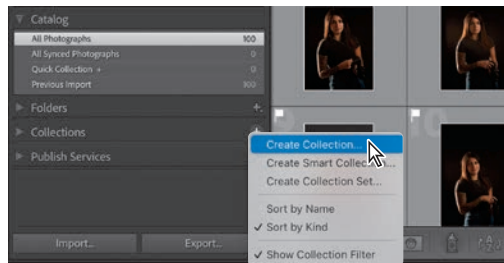
You will notice that this second iteration of culling goes much faster than the first one. The best thing about this part of the process is that you now have seen the shoot in its entirety, and can make better judgments as to which pictures stay and which pictures go. The only part you'll find disconcerting is the end—when you get to a completely black screen. Don't worry; just turn the lights back on (press L) and bring back the panels (Shift+Tab). You'll notice the screen was black because there were no more unflagged images. Click the Unflagged Photos Only icon again to bring back all your photos, and your cull is complete!

## What is a collection?

As your Lightroom library gets bigger and bigger, you'll need to have key images in your catalog accessible for various purposes. As mentioned, prior to Lightroom, photographers who wanted to share a group of images, like a portfolio of portraits, often placed copies of those pictures in a folder to share. As different needs arose, they had to create other folders and store more copies of the same pictures in them. Each folder had a specific need and contained copies of pictures that also lived in other folders. Keeping track of the copies, and the space they occupy, makes this solution untenable. This is where collections save the day.

If you're familiar with buying digital music, you can think of Lightroom collections as playlists for your pictures. You purchase one song and own one physical copy of a song, but that song can live in an unlimited number of playlists. The same holds true for pictures and collections in Lightroom.

On the left side of the Library module, you have a Collections panel. Click the plus sign (+) in the panel header, choose Create Collection, and give the collection a name. From there, you can add images from throughout your catalog to the



**Note:** Some Lightroom users prefer to maintain multiple catalogs to separate personal and professional images. If you're an experienced Lightroom jockey, that may work well for you. However, because the Lightroom search features work on one catalog at a time, you may find it easier to maintain a single catalog.

collection, no matter what folder they live in, and you can add as many collections as you need for organization.

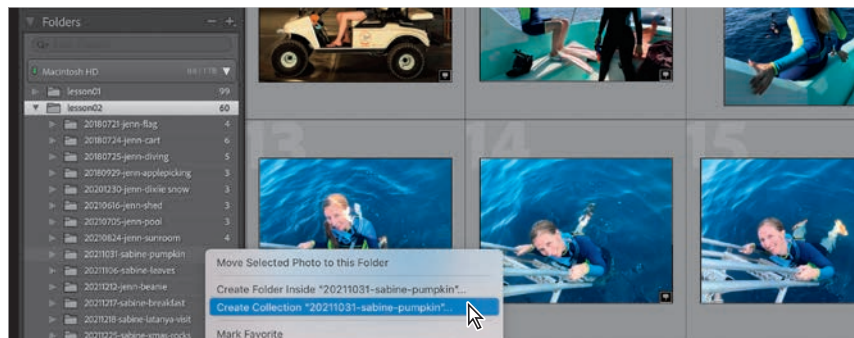
Every collection that you create in Lightroom can hold images from any folder you have imported into your catalog. It doesn't matter if the images live on your hard drive, an external drive, or a network-attached storage drive. The Lightroom catalog (your digital notebook) notes that you have one physical file but would like to have a reference to that file in multiple collections. The collections serve as a way to look at disparate parts of your photographic life without having to change your folders or make copies of your photos to live in different folders. This is an extremely powerful feature and one that your photographic life will revolve around.

In an effort to show you this concept in its simplest form, I'll share with you a series of photos of my daughter, Sabine, and my wife, Jennifer.

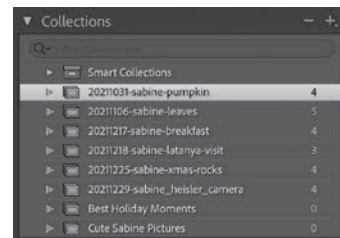
## Creating collections from folders of images

Let's experiment with creating collections and adding images to them with the files that we've imported for Lesson 2.

- 1 Go to the Folders panel in the Library module and click the little triangle to the left of the Lesson 02 folder. Inside that folder, you'll see a series of folders that we'll make into collections.
- 2 Right-click one of the folders that contains the word *Sabine* in the name, and select Create Collection "*folder name*" from the menu.



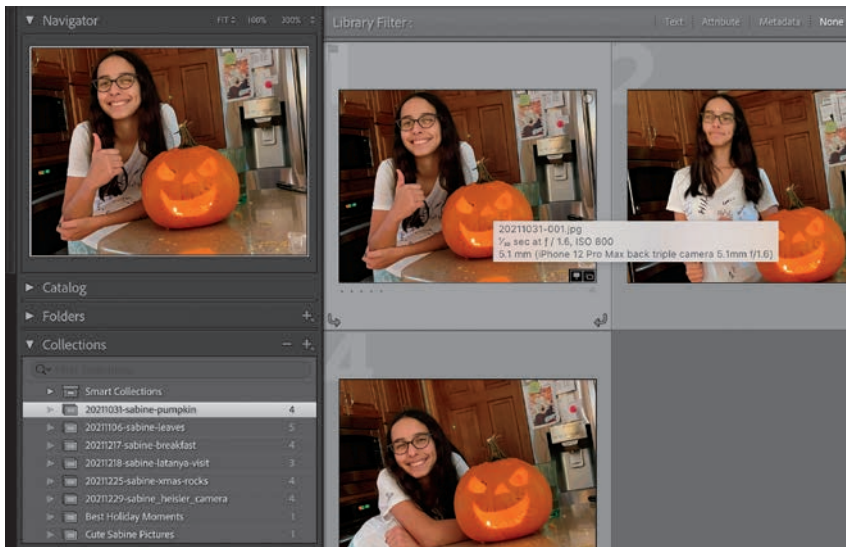
- 3 Repeat this with all of the other folders that have the word *Sabine* in their names, making collections for each of them. When you're done, you should have a total of six collections.
- 4 Press Command+D/Ctrl+D to deselect all photos. Click the plus sign (+) on the right side of the Collections panel's header, and create two additional collections: *Best Holiday Moments* and *Cute Sabine Pictures*, as you see here on the right.



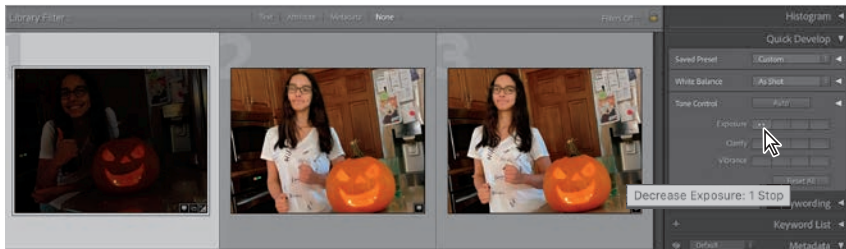
- 5 While it might seem repetitive to have collections that are named exactly like your folders, there are a couple of really powerful things happening under the hood here. First, unlike in a folder, you can drag the images around within the preview area and sort them into whatever order you like.

Second, you have the option to add images from any of those Sabine collections to the Best Holiday Moments or Cute Sabine Pictures collections. It doesn't matter where those images live or what folders they are in, you can simply drag any of them into a new collection if you'd like. The catalog (your digital notebook) will still reference that one physical file.

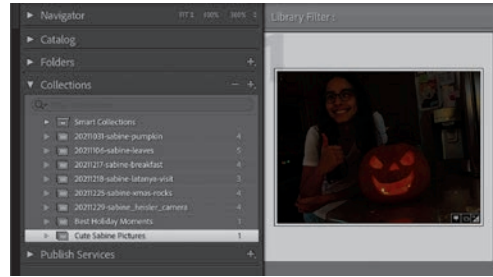
To show you the third important part about collections, click the thumbnail of the first picture in the 20211031-sabine-pumpkin and drag it into both the Best Holiday Moments and Cute Sabine Pictures collections.



- 6 Although we haven't covered developing a picture yet, let's make a quick change to this photo. On the right side of the Library module, open the Quick Develop panel's Tone Control section. Under Exposure, click the double left arrow three times. This should darken the image by three stops. You will see the change in the image in this collection immediately.



The awesome part about this is that the thumbnails of this image in the other two collections also will change to reflect the darker picture. You don't have to remember where the physical picture lives; Lightroom automatically makes that change across all instances of the image by referencing that one physical file.

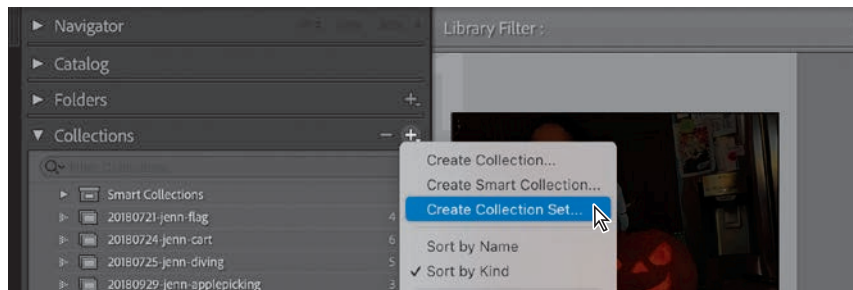


Before we go any further, let's create collections for the rest of the folders in the Lesson 02 folder (all of the folders with the word *Jenn* in them). You should then have a total of 17 collections.

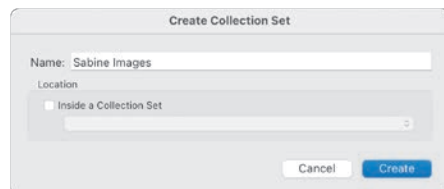
## Creating collection sets

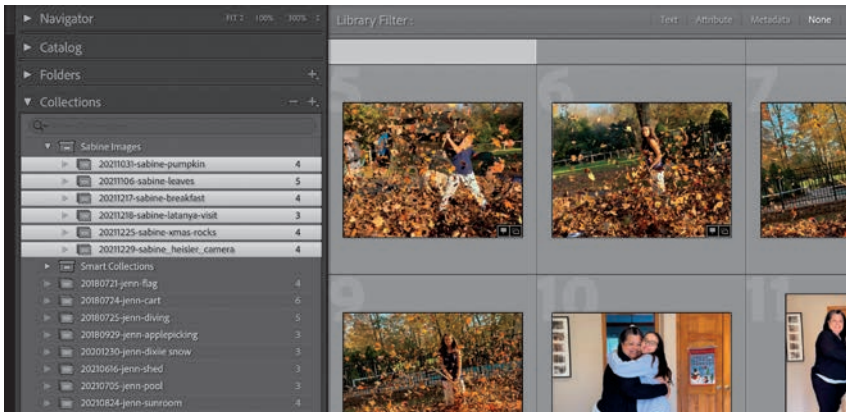
It's easy to see that our list of collections could get a little unwieldy. With so many Sabine collections, it would be hard to scroll and visually see where my work images are versus my family images. That said, there is a common element that runs through all of these collections of Sabine: my daughter, Sabine.

- 1 Click the plus sign (+) on the right side of the Collections panel's header, and select Create Collection Set. In the Create Collection Set dialog box, create a set called **Sabine Images**, and make sure the Inside A Collection Set check box in the Location area is unselected. Once the collection set is created, drag all of the Sabine collections into the Sabine Images collection set.

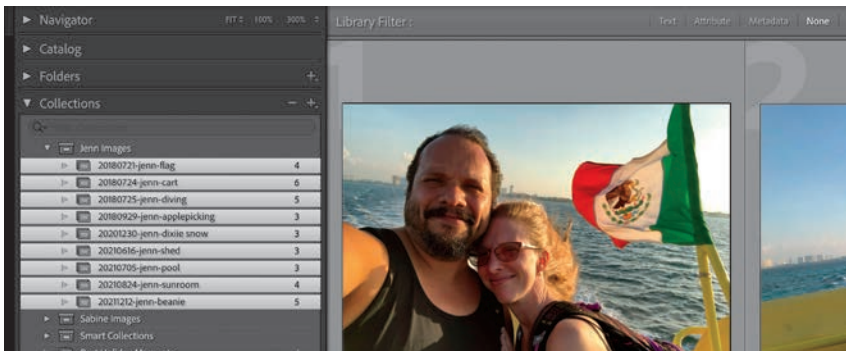


The result is a much cleaner look to the Collections panel. If you want to see the pictures inside all the Sabine collections, just click the Sabine Images collection set. If you want to see pictures from one of the individual collections, click that individual collection.

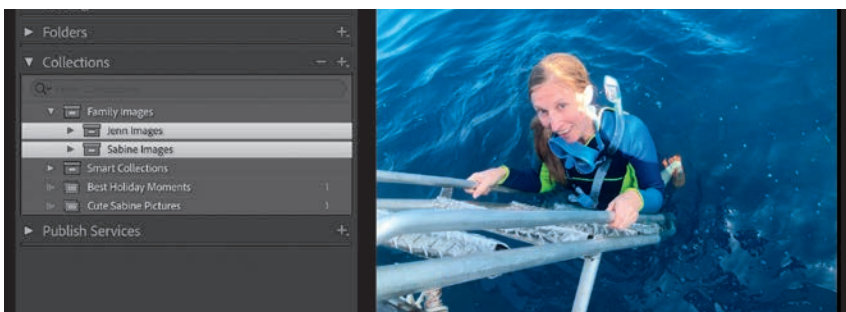




- 2 We can take this a step further. The Jenn collections also could benefit from that type of grouping. Create a collection set called **Jenn Images**, and make sure the Inside A Collection Set check box is unselected. Then, drag all the Jenn collections inside the Jenn Images collection set. This makes our collections even cleaner.



- 3 We can still take this level of organization further. Another great benefit of the collection set is that it holds not only collections but other collection sets as well. Looking at the collections that you have here, are there any other common elements that we can group around? Jenn and Sabine are my family. We could theoretically create a collection set called Family Images and place both the Sabine Images and Jenn Images collection sets in it.



Then, should we want to see all the family images, we could click the Family Images collection set. If we want to see a series of Jenn images, we can click the Jenn Images collection set. If we want to see Sabine images, we can click the Sabine Images collection set. To see individual events, we can click the individual collections to drill down further. In other words, a place for everything, and everything in its place.

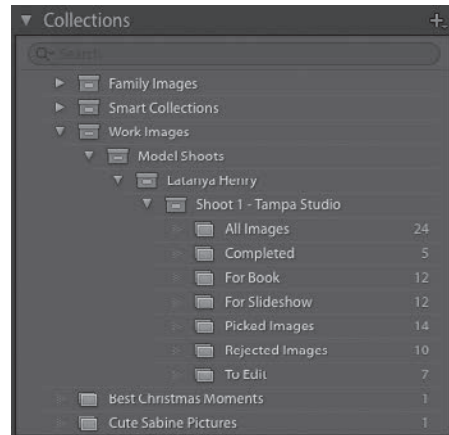
## Sample organizational sets

Now that we know that our collections can be used to see a subset of pictures across our catalog and that collection sets can let us organize all of those views, let's put it into other workflows that make sense.

Let's say I work doing people photography, and I get an assignment to make a series of pictures of my friend Latanya Henry. In that shoot, I would have several groups of pictures—picked images to go over, rejected images, images that I want to edit further, images to take into a slideshow, and so on. If I made a collection for each group, what would happen if I got hired again to make another series of pictures for Latanya? Would I just create “Latanya Picked Images Number 2” and name the other collections in the same manner? That would be too messy.

Instead, what if we made a collection set for Latanya Henry? Then, when I import the first shoot with Latanya, I would make a collection set for that specific shoot. Inside it, I would place all the collections that are related to that shoot.

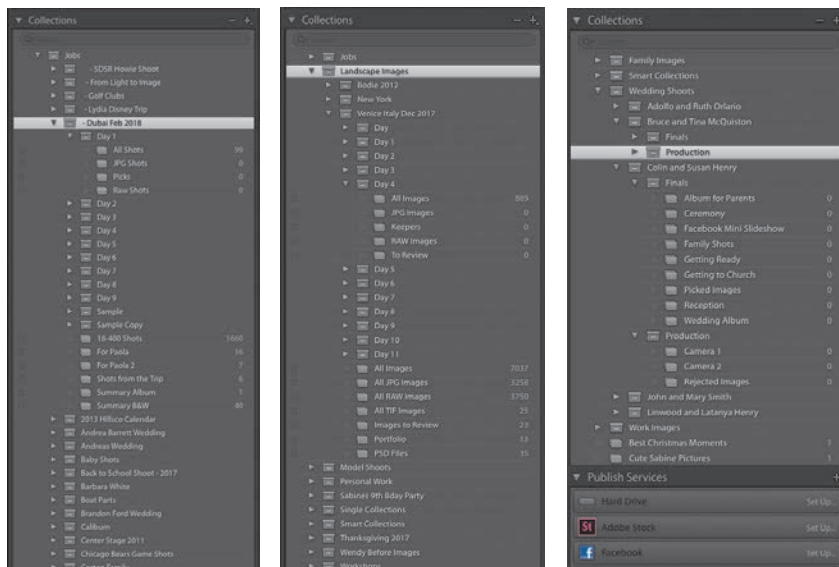
The next time I shoot with Latanya, I would create a collection set for that second shoot, and repeat the process. Not only does this allow you to see only what you want to see, but it also lets you separate out individual images for the other functions in Lightroom, such as books or slideshows. You can have a collection for each function.



On the next page are a series of sample suggestions that you can use to organize your photography work. If you are a wedding photographer, you can use collection sets on a per couple basis, with a collection set for each couple's wedding. Inside each wedding, you can separate production work (shots from multiple cameras) and the finished work, using collections to sort out the various pieces of the wedding.

If you are a commercial photographer who does multi-day shoots, you can make a collection set for the entire job, organize the days into individual collection sets, and filter out the best shots into a “best of” collection. If you are a landscape pho-

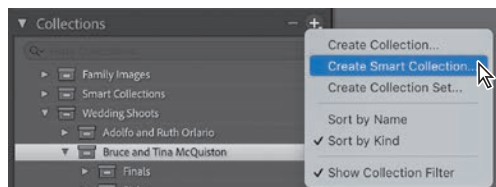
tographer, the organization would be similar to that of a commercial shoot, but instead of jobs, you can sort by locations.



These samples are provided as ideas to get you going, not as hard-and-fast rules for your photography work. The point is that you should take a moment to plan how you want to organize your Lightroom catalog using collections and collection sets. Once you do, it's up to you to stick to that format. It's a little time-consuming at first, but it pays great dividends later on as your catalog gets larger.

## What is a smart collection?

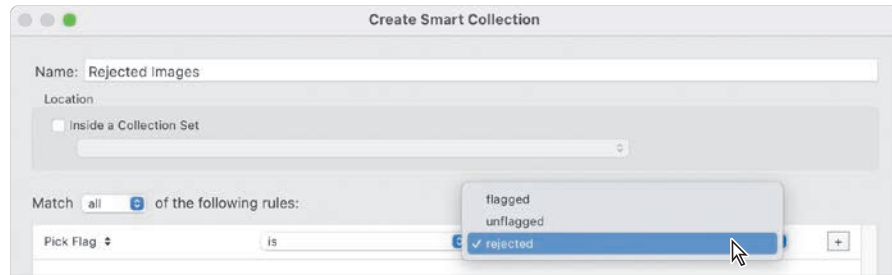
Smart collections are collections that you build based on pre-defined criteria. Click the plus sign (+) on the right side of the Collections panel's header, and choose Create Smart Collection from the menu.



In the Create Smart Collection dialog box, you can pick from a ton of different criteria to pull images into your smart collection. Below the Match menu, the left side shows you the criterion chosen, the center section gives you comparison options, and the right side gives you the restrictions for each criterion. Click the plus sign (+) at the upper right of the rules field to add another criterion (you can have as many as you want).

Once the smart collection has been created, you will see it in the Collections panel with a number of images in it. The number of images in a collection increases or

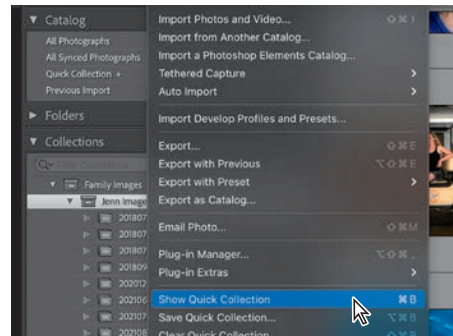
decreases as you flag images across your entire catalog. In this example, I created a smart collection that will keep track of images that I mark as rejected. As I flag my images, no matter where in the catalog the rejected ones live, Lightroom will keep a running tally of them inside this smart collection.



I recommend that you drill down into that column on the left during your smart collection creation. You'll find a ton of parameters that you can immediately put to use in sorting your photographic work.

## What is the Quick Collection?

There may be times when you don't necessarily need to create a collection, but would like to temporarily organize a set of images into a group. Rather than creating and deleting a regular collection, moving images around, or exporting images unnecessarily, you can use the Quick Collection. The Quick Collection does not live in the Collections panel and is available to you by clicking Quick Collection in the Catalog panel or pressing Command+B/Ctrl+B.



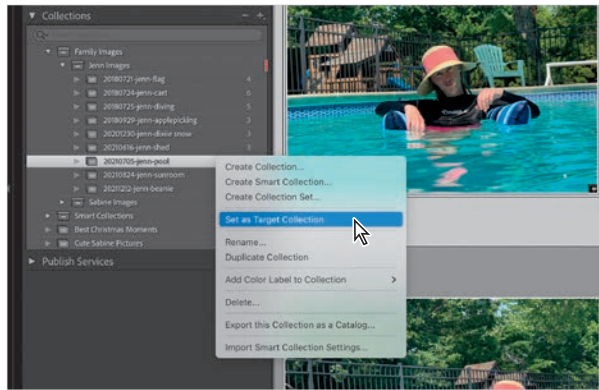
Add images to the Quick Collection as you move about the Library module by selecting an image and pressing the B key. Or, in Grid view, click the small Quick Collection circle in the upper right of any thumbnail; it turns gray to show you that the photo has been added to the Quick Collection.

## What is a target collection?

A target collection takes all the ease of adding images to the Quick Collection, and following the same process, assigns the images to one of the regular collections you've created. To use this feature, right-click a collection you've already created and choose Set As Target Collection (you'll see a plus sign [+] appear to the right of your collection name). Now, every time you press the B key, the selected image



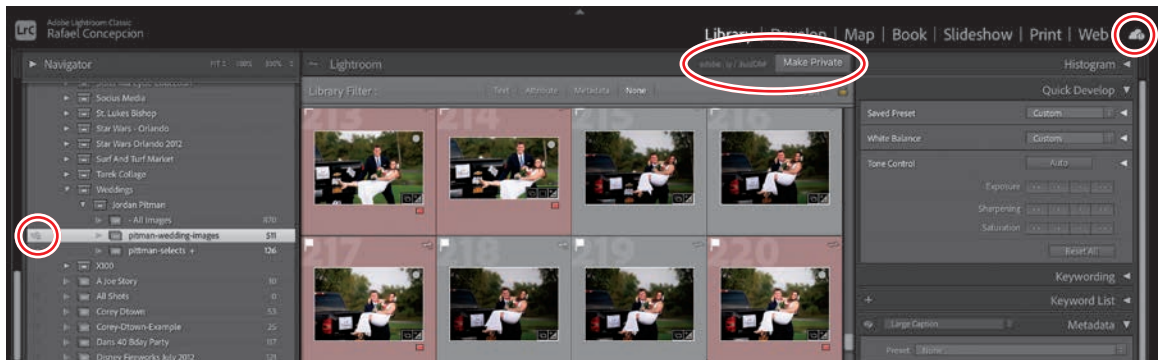
will be added to the target collection you specified, and not to the Quick Collection. To turn the target collection off, right-click it in the Collections panel and choose Set Target Collection from the menu again. Then, the images will go back to being added to the Quick Collection.



## Sharing your collections online

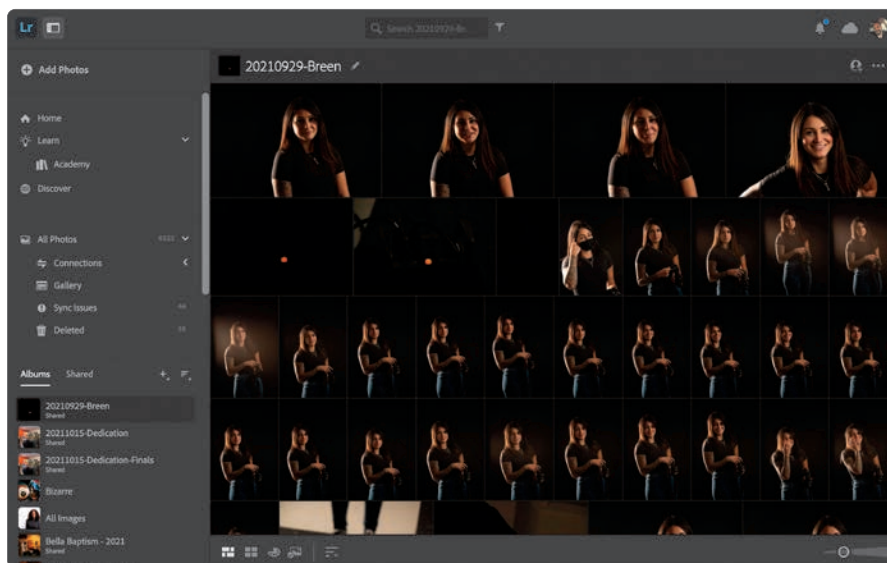
Another benefit of having your images in collections is that you can share the collections online. Previously, if you needed to get feedback on a shoot from someone else (a client, family members, friends), you would have to export images from the collection and import them into a third-party website.

In Lightroom Classic (desktop), you can automatically sync a collection with Lightroom (mobile) once you turn syncing on. Click the cloud icon at the right of the Module Picker and click Start Syncing. Then, select the Sync With Lightroom option in the Create Collection dialog box. If you forget to do this when creating your collection or decide to sync it later, simply click the lightning bolt icon to the left of the collection name. Lightroom Classic will generate the files and automatically create an album in Lightroom, as well as a private website you can view by logging in at [lightroom.adobe.com](http://lightroom.adobe.com). You can make the gallery public by clicking the Make Public button in the upper-right corner of the preview area.



After you click Make Public, Lightroom Classic creates a URL that you can share with others (to the left of the button you clicked to make the website public, once you have made it public). In the online version of Lightroom (which has fewer

features than Lightroom Classic), all flags, star ratings, color labels, and other meta-data settings will appear with the images (as you can see in Grid view below).



After clicking a thumbnail, you are taken to Loupe view, where you can click the Info icon to see the photo's metadata or the Activity icon to leave a comment or read other viewers' comments. Those comments are automatically saved to the cloud and then synced back to your computer for you to review in the Comments panel (which appears below the Metadata panel in Lightroom Classic once a collection is made public).



## Adding star ratings and color labels

Rating your images is pretty simple. Pressing the numbers 1–5 will add one to five stars to any images you have selected. To remove any of the star ratings, just select the image and press the number 0.

In addition to pressing 1–5 for star ratings, pressing the numbers 6, 7, 8, and 9 on your keyboard will add the red, yellow, green, and blue colors labels, respectively. There is one color left—purple—that can only be accessed through the Photo > Set

Color Label menu. To remove the color from an individual picture, just select the photo and press the number for the associated color again, and the color is gone.



Now that you know how to add star ratings and colors to your pictures, let's talk about how best to use them. Once your pick and rejected flags have been assigned, you can use star ratings to rank your pictures in a “good, better, best” scenario.

The star rating system also can be useful for marking images for specific tasks or categories. Your portfolio shots can have five stars, while images that go into a slideshow can be your four-star shots. Or, in a wedding shoot, images of the groom's family can have three stars, while images of the bride's family can be your two-star shots.

I like to use colors for files that I am going to work on in Photoshop, files that are ready for printing, and final edits of files. Any red-labeled images in my catalog are images that need some work in Photoshop. The green-labeled images are ready for printing. Purple-labeled images are final copies of images that need no additional editing. I use purple for final images, as it's the only color that I cannot accidentally select with a number key. The colors also make it very easy to spot images that need to be worked on while in Grid view.

## Adding keywords

Adding keywords is an extremely powerful way to keep track of photos by subject matter in your Lightroom catalog. Think of them as search terms, like the ones you use to find something on the web. Keywords don't take up much space—they're text

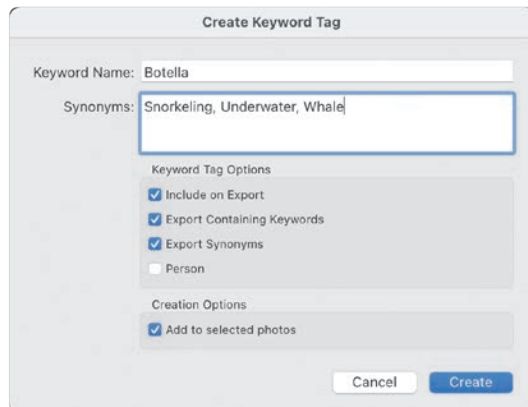
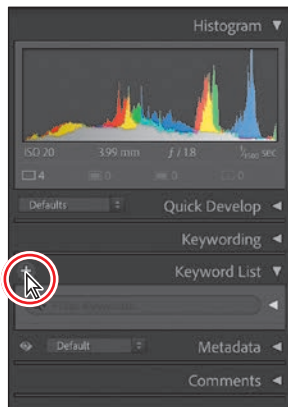
added to the photo’s metadata—so you can apply as many keywords to each photo as you want.

For the best results, make your keywords descriptive of the subject matter, such as “diving,” “snorkel,” “underwater,” “freedive,” and so on. Avoid adding keywords that you’ve included in the photo’s filename, because the Lightroom search capability extends to filenames, too.

You’ll develop your own list of keywords as you go, but to get you started, use the following steps to add keywords to the exercise files:

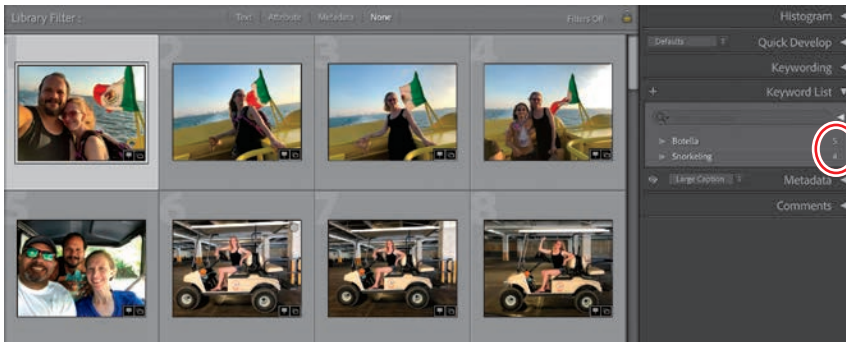
- 1 In the Library module, go to the Collections panel, and make sure that you have the 20180725-jenn-diving collection selected. We will add some keywords here.
- 2 In the Grid view, select a series of images from this collection (click the first photo you want to select, then Shift-click the last image to select all the images in between).
- 3 In the Keyword List panel on the right, click the plus sign (+) on the left side of the panel’s header. In the dialog box that appears, enter **Botella** in the Keyword Name field, and then type **Snorkeling, Underwater, and Whale** in the Synonyms field (use a comma to separate the synonyms). Select the Add To Selected Photos option, leave the three export options selected, and then click Create.

► **Tip:** To create nested keywords, select an existing keyword in the Keyword List panel and then click the plus sign (+) to add another keyword. To see nested keywords, click the triangle to the left of a keyword in the Keyword List panel to expand your keyword hierarchies. You can also type a keyword into the search field at the top of the Keyword List panel to reveal it in the panel.



Your new “Botella” keyword appears in the Keyword List panel, and Lightroom adds it to the selected photos. A general keyword like this also can serve as a category in which to nest more specific keywords (say, “freedive” and “scuba”).

- 4 Now, select the last four images and repeat step 3, creating the keyword **Snorkeling** and applying it to your selected photos.
- 5 To see all the photos in your Lightroom catalog that have a specific keyword, move your pointer over the number to the right of that keyword in the Keyword List panel and click the arrow that appears to the number’s right.



When you click the arrow to the right of a keyword (circled), Lightroom automatically switches your source to All Photographs in the Catalog panel. Once you apply a keyword to a photo, a tiny tag icon appears in its lower-right corner.

## Other ways to apply (and delete) keywords

As you may imagine, there are additional ways to apply keywords. For example, you can:

- Drag and drop the keyword from the Keyword List panel onto one or multiple selected thumbnail previews.
- Drag and drop one or more selected thumbnails onto a keyword in the Keyword List panel.
- Select one or more thumbnails, and in the Keyword List panel, select the check box that appears to the left of a keyword. To remove a keyword from a photo, do the same thing but deselect the check box that appears to its left.
- Use the Keywording panel (it's above the Keyword List panel). If you go this route, you can create and apply keywords in the same step. To do this, select some thumbnails and then click within the box labeled "Click here to add keywords." Enter a new keyword. If you want to create and apply more than one keyword to the selected photos, use a comma between each keyword. For example, you may enter **Dune, Desert** and then press Enter/Return on your keyboard to create and apply both keywords.

To delete a keyword from your list, use the Keyword List panel (not the Keywording panel). Click the keyword and then click the minus sign (–) on the left side of the panel's header. In the warning dialog box that appears, click Delete.

Alternatively, right-click the keyword, and from the menu that appears, choose Delete. In the warning dialog box, click Delete. In fact, the aforementioned menu offers several useful options for managing your keywords. For example, you can edit them, remove a keyword from the selected photo, or delete the keyword altogether.

Either way, the keyword is removed from your keyword list and from any photos you applied it to.

## Review questions

- 1 What's the simplest way to assess and cull recently imported photos?
- 2 Name three reasons it is important to use collections.
- 3 What is a smart collection?
- 4 What is the Quick Collection?
- 5 How do you share a collection online publicly?
- 6 How do you add a five-star rating to a photo?
- 7 How do you create a new keyword in the Keyword List panel?

## Review answers

- 1 Use the Pick and Reject flags to assess and cull imported photos.
- 2 First, you can drag images in a collection into any order you want. Second, you can add a photo to as many collections as you want without making a new copy of the photo (saving you disk space). Third, any Develop changes you make to the image will be reflected in each collection it is in.
- 3 A smart collection is a self-populating album based on criteria that you set.
- 4 The Quick Collection is a temporary collection that lives in the Catalog panel.
- 5 Click the lightning bolt icon to the left of the collection name in the Collections panel, then click the Make Public button at the upper right of the preview area.
- 6 Press the number 5 key on your keyboard.
- 7 Click the plus sign (+) on the left side of the Keyword List panel's header.

# INDEX

## A

- add, 21
- adding detail, 80–85
- adding masks, 114–115
- adjustments. *See also* editing
  - auto, 72, 73
  - filter, 101
  - global, 9, 67–85
  - linear, 99–102
  - local, 9, 94–131
  - multiple, 104
  - Photoshop-specific, 11
  - Radial Gradient tool, 103–104
  - relative vs. absolute, 34
  - shadows and highlights, 73–77
  - viewed side by side, 125–127
  - whites and blacks, 77–79
- Adobe Authorized Training Centers, 15
- Adobe Photoshop Classroom in a Book*, 2
- Adobe Photoshop Elements, 154, 156
- Adobe Photoshop Lightroom Classic Classroom in a Book*, 2, 316
- Adobe Photoshop Restoration & Retouching* (Eismann, Palmer, Dunbar), 230
- Adobe Raw profiles, 70
- Adobe RGB, 151, 152
- Adobe Sensei, 97
- AI (artificial intelligence) masks
  - additions/subtractions, 187–190
  - Adobe Sensei, 97
  - new masks via, 98
  - Photoshop tools for, 159–162
  - Select Subject, 110
- Allen, Will, 195
- alterations, 11
- angled selections, 184–187
- anorexia, 231
- Attribute mode, 48
- Auto Sync, 92

## B

- backgrounds
  - correcting portrait, 201–202
- Select And Mask workspace, 196

- backups, 18
- Balance slider, 123
- base color, 274
- beauty, manufacturing, 231
- bit depth, 9, 153
- black-and-white effects, 120, 126–127
- Blacks, adjusting, 77–79
- blemish removal, 116–118, 140, 226–227
- blending
  - automatic, 211, 212
  - color, 274
  - layer blend modes, 274
  - photo combinations and, 269
  - signature graphic, 302
- Blending slider, 123
- blocked areas, 73
- blown out areas, 73
- blur effects, 250–258
- Blurb.com, 315
- body sculpting, 225–230
- bokeh, 253
- books, 10, 312–315
- Boundary Warp, 289
- bracketing feature, 284–285
- brightness, 72, 114
- Brush tool. *See* Masking Brush tool
- brushes, mixing with, 245
- Build Previews, 29

## C

- Camera Matching profiles, 70
- camera profiles, 68
- Camera Raw
  - installation of, 2
  - skin texture filter, 228–229
  - snapshot information, 172, 173
  - synced with Lightroom, 157–158
- Candidate photo, 37
- canvas extension, 260–261
- catalogs
  - emailing from, 301
  - exporting from, 303
  - how to create, 12–13
  - importing to, 20–30



- information in, 6
    - single vs. multiple, 20, 49
  - changes, syncing, 90–92
  - chromatic aberration, 86
  - cinematic color grading, 69
  - circular adjustments, 103
  - Clarity, 79–80, 113, 287
  - Classroom in a Book series, 1–2
  - Clear slider, 241
  - Clone Stamp tool, 212–213
  - cloning, 159, 163, 164
  - CMYK workspace, 152
  - collages, 269–281
  - collections
    - collection sets, 52–54, 162
      - creating, 50–52
      - defined, 49–50
      - Library module, 33
      - Lightroom, 7
      - organizational sets, 54–55
      - Quick Collection, 56
      - sharing, 57–58
      - Smart collections, 55–56
      - target, 32, 56–57
  - color
    - cast, 78
    - converted to black-and-white, 120–122
    - creative effects, 120–127
    - fading gradient, 275
    - first edit for, 180
    - grading, 69, 122–127
    - labels, 58–59
    - layer blend modes, 274
    - lookup tables, 69
    - masking, 100, 112–114
    - Photoshop settings, 155–156
    - slider, 84
    - soft proofing, 313
    - space, 9
    - wheels, 122
  - color space
    - defined, 9
    - Elements, 154
    - how to choose, 152
    - large and small, 151
    - Lightroom/Photoshop integration, 150–157
    - Photoshop settings, 155–156
    - print profiles, 310
  - combining photos
    - group photos, 282–284
    - HDR images, 284–288
    - lesson on, 266–295
    - panoramas, 289–293
    - Photoshop tools for, 10
    - review of, 294, 295
    - texture and collage effects, 269–281
  - Comments panel, 34
  - Compare view, 37
  - compatibility preferences, 156–157
  - compositing, 10
  - Content Authenticity Initiative, 195
  - Content-Aware Fill, 216–235
  - Content-Aware Scale, 218–235, 260–261
  - content credentials, 195
  - content removal, 209–218
  - contrast, 72–73
  - copies, virtual, 88–89
  - Copy as DNG, 21, 24
  - Copy/Paste, 20, 91
  - copyrights, 300, 306
  - Create Collection, 49
  - Create Smart Collection, 55
  - creating collections, 50–54
  - Creative Cloud, 4, 158
  - creativity
    - artistic portraits, 241–250
      - authenticity and, 195
      - blur effects, 250–258
      - color effects, 120–127
      - sharpening, 83
  - Crop & Straighten, 85
  - cropping images, 85–86, 223
  - culling, iterative, 46–49
  - cursors, resizing, 117
  - Curves option, 247
  - customization of view, 35–40
- ## D
- dark circles under eyes, 226
  - deghosting, 286
  - Dehaze slider, 101, 113, 287
  - deletions, keyword, 61
  - depth of field, 250
  - design elements, 11
  - destructive editing, 5
  - detail
    - adding, 79–80
    - enhancing, 139
    - panel, 81
    - slider, 81, 84
  - Develop module
    - adding detail, 80–85
    - clarity, vibrance, and saturation, 79–80, 125
    - how to use, 67
    - profiles, 68–71
    - saving defaults/presets, 74–75
    - shadows and highlights, 73–77
    - slideshow in, 313
    - syncing changes, 90–92
    - white balance, 71–72
    - white/black adjustment, 77–79

- digital alteration, 231
- The Digital Print* (Schewe), 83
- Distortion slider, 253
- DNG (digital negative), 24
- DPI (dots per inch), 153
- Dunbar, Dennis, 230
- Duplicates, 88

## E

- eating disorders, 231
- edge contrast, 287–288
- editing. *See also* adjustments
  - Content-Aware Fill/Scale, 218–235
  - content removal, 209–218
  - global adjustments, 67–85
  - local adjustments, 94–131
  - masks for, 97–98
  - parametric, 97
  - Photoshop layers for, 5
  - primary external editor, 151, 153
  - raw file editing, 159–164
  - responsibility in, 231
  - safeguarding original, 209
  - saving variations during, 88–90
  - setting Lightroom preferences, 150–155
  - syncing changes, 90–92
  - TIFF or JPEG editing, 166–168
- Effects panel, 127–129
- Eismann, Katrin, 230
- Elements, 154, 156, 169
- Elliptical Marquee tool, 181
- emailing photos, 301–303
- Embedded & Sidecar, 29
- ethics, 231
- exaggerated edge contrast, 287–288
- Export command, 303–304
- exporting work
  - books, slideshows, and web galleries, 312–315
  - emailing photos, 300–303
- exporting photos, 303–307
  - identity plates, 299–300
  - lesson on, 296–317
  - presets, 308
  - prints, 308–312
  - review of, 317
  - signature graphic, 302
  - watermarks, 300–301
- exposure
  - HDR images, 284–285
  - setting, 72–73
  - slider, 99, 103
- External Editing preferences, 150–155
- eyes, adjusting, 137–138

## F

- f-stops, 72
- facial feature manipulations, 234
- fades, photo, 272–278
- File Handling panel, 23
- File Renaming panel, 40
- files
  - naming externally edited, 155
  - renaming during import, 24–26
- Fill command, 11
- Filmstrip, 30, 48
- filters
  - adjusting, 101
  - Blur effects, 250–256
  - Linear Gradient, 99–102
  - Radial Gradient, 103–104
  - skin texture, 228–229
- flag markers, 47
- flow, 229, 247
- flyaway hairs, 142–143
- focal point accentuation, 250–252
- folders
  - creating collections from, 50–52
  - Library module panel, 32
  - organizing storage via, 19–20
  - renaming during import, 24–26
- formats
  - emailing photos, 301
  - export, 304–305
  - Lightroom/Photoshop integration, 151
  - proprietary vs. open, 24
- Forward Warp tool, 232
- Free Transform, 222, 275
- frequency separation, 139–140
- fringing, 192

## G

- galleries, web, 312–315
- global adjustments
  - cropping, 85–86
  - Develop module, 64–93
  - developing pictures, 67–85
  - lens corrections, 86–88
  - lesson on, 64–93
  - Lightroom, 9
  - process versions, 92
  - review of, 93
  - snapshots for variants, 89–90
  - syncing changes, 90–92
  - virtual copies for variants, 88–89
- glow, glamour, 241
- Glow slider, 241
- Gradient Mask, 275–278
- grading, color, 122–127

grain, adding, 127, 129  
graphic, signature, 302  
Grid view, 31, 35  
group photos, 282–284  
guided transformation, 87

## H

Haftel, Josh, 69  
Hair  
    Clone Stamp tool for, 212  
    selecting, 196–201  
halos, edge, 192  
hard drives, 26, 315  
*The HDR Book* (Concepcion), 286  
HDR (high dynamic range) images  
    how to make, 284–288  
    Lightroom editing of, 9  
    panoramas, 289, 291–293  
headless mode, 287  
Healing Brush, 209, 212  
Heisler, Gregory, 120  
Help resources, 14–15  
highlights, adjusting, 73–77  
histogram, Library module, 33

## I

identity plates, 299–300  
importing and managing photos  
    catalog imports, 20–30  
    choices for, 20–21  
    copyright addition during, 27  
    hard drive, 26–28  
    lesson on, 16–43  
    Library management, 30–35  
    memory card, 21–23  
    renaming photos, 24–26, 40–41  
    review of, 42–43  
    storage, 18–20  
    view customization, 35–40  
information panels, Library module, 33–35  
input sharpening, 81, 83  
inspection, spot, 118  
Instagram carousel, 259–264  
integration, Lightroom/Photoshop, 150–157  
Iris Blur filter, 250–252  
irises, enhancing, 138–139  
iterative culling, 46–49

## J

JPEGs  
    bit depth for, 153  
    color space for, 151  
    exporting, 305  
    Lightroom to Photoshop sends, 165–168

saving prints as, 309  
vs. raw images, 8, 151

## K

keywords  
    adding, 59–61  
    panel, 34  
Kost, Julieanne, 306

## L

labels, adding, 58–59  
landscape profile, 70  
landscapes, Liquify tool for, 235  
Lasso tool, 184–190, 196  
layers, Photoshop  
    blend modes, 274  
    collages with, 278–281  
    compositing via, 10  
    defined, 5  
    fading photos with, 272–275  
    layer mask rhyme, 258  
    masks and, 11, 98  
    photo combinations and, 269  
lens corrections/transformations, 86–88  
lessons  
    experimentation with, 2  
    importing files for, 13  
    importing/managing photos, 16, 18  
    online files, 3  
    prerequisites for, 2  
Libraries panel, 201  
Library module  
    managing photos in, 30–35  
    renaming photos in, 40–41  
    slideshow in, 313  
    syncing changes in, 92  
    view customization, 35–38  
license image, 201  
light exposure, 72  
Lightroom Classic  
    benefits of, 7–10  
    catalog creation, 12–13  
    CIB lessons for, 1–2  
    HDR image-making, 284–287  
    importing/managing photos, 16–43  
    installing, 4  
    integration with Photoshop, 4–12, 150–157  
    new profiles in, 68–71  
    new tools, 97, 109–111, 121  
    organization via, 5–6  
    panoramas, 289–290  
    process versions, 92  
    role of, 4  
    sending JPEG and TIFF to Photoshop, 165–168

- Lightroom Classic (*continued*)
  - sending photos to Photoshop, 159–165
  - sending Smart Objects from, 169–173
  - snapshots, 169–173
  - synced with Camera Raw, 157–158
  - vs. Photoshop, 4–7
  - Windows vs. macOS, 2
- Lights Out mode, 36
- Linear Gradient tool, 99–102
- Liquify tool, 226, 230–235
- local adjustments
  - adding/subtracting masks, 114–115
  - Clarity and Dehaze slider, 113
  - color effects, 120–127
  - color masking, 112–114
  - Effects panel, 127–129
  - existing mask add-ons, 104–105
  - lesson on, 94
  - Lightroom, 9
  - Linear Gradient tool, 99–102
  - Masking Brush tool, 106
  - object removal, 116–119
  - Radial Gradient tool, 103–104
  - review of, 130–131
  - second mask add-ons, 107–108
  - Select Sky/Select Subject, 109–111
  - syncing, 91
  - via masks, 97–98
- Loupe view, 37
- Luminance, 83
- LUTs (color lookup tables), 69

## M

- macOS instructions, 2
- make public, 57
- management. *see* importing and managing photos
- Marquee tools, 180–190, 202
- Masking Brush tool
  - fading photos with, 272–275
  - how to use, 106
  - Opacity vs. Flow, 229
  - operating system and, 198
  - secondary masks, 107
  - skin softening with, 139–141
- masks. *See also* selections
  - adding second, 107–108
  - adding/subtracting, 114–115
  - adding to existing, 104–105
  - brush-based, 106–108
  - Color and Luminance Range, 112–114
  - color of, 100
  - fading photos with, 272–278
  - layer mask rhyme, 258
  - Masking Brush tool, 106
  - Photoshop layers as, 11

- pixel- and vector-based, 97–98
- Select And Mask workspace, 196–201
- Select Sky/Subject, 109–111
- sharpening and, 82
- tightening, 192
- visibility of, 106
- Masks panel, 98
- matting, 192
- Maximize Compatibility preferences, 156–157
- maximum print size, 312
- memory cards
  - erasing, 21
  - failure of, 25
  - imports from, 21–24
- merging to HDR, 285–286
- merging to panorama, 289–290
- metadata
  - copyrights, 27
  - exports and, 306
  - keywords, 59–61
  - Library module panel, 34
  - star and color ratings, 58–59
- Minimal option, 29
- misinformation, 195
- Mixer brush, 244, 245–248
- Monochrome profile, 69
- motion, with blur effects, 254–258
- move, 21
- multiple focal points, 250
- multiple photo processing, 9

## N

- NAS (network-attached storage drive), 18
- negative clarity, 113
- nested keywords, 60
- neural filter, 230
- neutral profile, 70
- noise reduction, 83, 84, 165
- nondestructive editing, 6

## O

- object removal, 116–119
- Object Selection tool, 193–195
- Oil Paint filter, 244–245
- 1:1 option, 29
- online content, 3–4, 14
- online sharing, 57–58
- Opacity, 229, 247, 270
- open formats, 24
- operating system tips, 2
- organization
  - collections, 49–58
  - iterative culling, 46–49
  - keyword additions, 59–61
  - lesson on, 44–63

- Lightroom, 4, 5–6
- review of, 62–63
- sets, 54–55
- star ratings and labels, 58–59
- temporary, 56
- via collections, 33

organizational sets, 54–55

output sharpening, 83

## P

painting, from photo to, 244–245

Palmer, Wayne, 230

panels, Library module, 30–35

panoramas

- creating HDR, 291–293
- guides and slices for, 261–264
- how to make, 289–293

parametric editing, 97

Patch tool, 214–216

Path Blur, 255

Pen tool selections, 184

perspective corrections, 86–87, 253

Pew Research, 195

Photoshop

- artistic portrait treatments, 241–250
- benefits of, 10–12
- Classroom in a Book lessons for, 1–2
- color settings, 155–156
- combining photos with, 269–281
- Content Authenticity Initiative, 195
- Content-Aware Fill/Scale, 218–235, 260
- content removal, 209–218
- creative blur effects, 250–258
- editing via, 5
- hair and soft edge selections, 196–201
- HDR image-making, 287–288
- identity plates, 300
- installing, 4
- integration with Lightroom, 4–12, 150–157
- photo finishing in, 106
- Select Object, 193–195
- Select Subject, 190–192
- selection in, 178–190, 201–203
- sending JPEG and TIFF to, 165–168
- sending photos to Lightroom, 159–165
- skin/body retouching, 225–230
- sky replacement, 259–260
- Smart Objects sent to, 169–173
- snapshots, 169–173
- specialized tasks in, 4
- vs. Lightroom, 4–7
- Windows vs. macOS, 2

pixels

- blending, 209
- export format and, 305
- maximum print size, 312

- pixel-based masks, 98
- pixel editing, 5
- PNG format, 305, 309
- Polygonal Lasso tool, 184–190
- pore detail, 226
- portrait profile, 70
- portraits

  - artistic treatments, 241–250
  - body sculpting, 230–235
  - enhancing irises, 138–139
  - flyaway hair removal, 142–143
  - lesson on, 132–147
  - lightening teeth, 135–137
  - lightening whites of eyes, 137–138
  - Photoshop corrections, 201–203
  - reducing wrinkles, 143–144
  - retouching, 144–146
  - review of, 147
  - skin softening, 139–141, 231

post-crop vignetting, 103, 127–129, 164

ppi (pixels per inch), 153

prerequisites, 2

presets

- exporting multiple, 308
- exporting photos and, 306–307
- identity plates, 299–300
- Lightroom, 9
- Lightroom/Photoshop integration, 150–155
- Photoshop color settings, 155–156
- saving, 74–75
- saving Develop module, 74–75
- tool settings, 102
- watermarks, 300–301

previews

- enlarging, 36
- options, 29
- selecting thumbnail, 39

Print module, 308

prints

- creating, 308–312
- Lightroom, 10
- resolution for, 153

process version, 92

Process Version 5, 92

Profile Browser, 70

profiles

- camera, 68–71
- lens, 86
- print, 310

promotion, self, 259

ProPhoto RGB, 151, 152

proprietary formats, 24

publish services

- Lightroom, 10
- online sharing, 57
- overview of, 33

## Q

Quick Collection, 56  
Quick Develop panel, 34, 51

## R

Radial Blur filter, 254–256  
Radial Gradient tool, 103–104  
Radius slider, 81  
rating images, 58–59  
raw images  
    bit depth for, 153  
    color space for, 151  
    HDR images, 284  
    Lightroom to Photoshop sends, 159–165  
    processing, 7  
    proprietary vs. open, 24  
    Smart Objects, 169  
    syncing Lightroom and Camera Raw, 157–158  
    vs. JPEG, 8  
Rectangular Marquee tool, 180–184, 202  
registration, book, 3  
relative adjustments, 34  
removal of objects  
    Lightroom, 116–119  
    Photoshop, 209–218  
    repositioning and, 11  
    sky replacement, 259–260  
renaming  
    exports and, 304  
    imports and, 24–26, 40–41  
    memory card failure and, 25  
rendering with Lightroom, 158  
resizing photos, 305–306  
resolution, 153, 305, 312  
responsibility for authentic content, 231  
result color, 274  
retouching  
    Content-Aware Fill/Scale, 218–235  
    content removal, 209–218  
    ethics and, 231  
    lesson on, 206–237  
    Photoshop tools for, 11  
    review of, 236, 237  
    skin, 225–230  
    video demos, 228

## S

sample point setting, 209  
sampling brush, 220, 221  
Saturation, 79–80  
scaling up, 222–225  
Schewe, Jeff, 83  
sculpting portraits, 230–235  
secondary masks, 107–108

Select And Mask workspace, 196–201  
Select Object, 193–195  
Select photo, 37, 39  
Select Sky, 97, 109–111  
Select Subject  
    AI advances in, 97  
    Lightroom tool, 109–111  
    Photoshop tool, 190–192  
    portrait correction with, 203  
    vs. Object Selection, 197  
selections. *See also* masks  
    additions/subtractions, 187–190  
    hair and soft edge, 196–201  
    Photoshop basics, 179–180  
    Polygonal Lasso tool, 184–190  
    portrait corrections, 201–203  
    Rectangular Marquee tool, 180–184  
    tightening, 192  
selective adjustments. *See* local adjustments  
sensor spot removal, 116–118  
sets, collection, 52–54  
setting the sample point, 209  
Shadows  
    adjusting, 73–77  
    clipping, 73  
shape, selection by, 180–190  
sharing collections, 57–58  
sharpening, 81, 83, 84–85, 165  
signature graphic, 302  
sketch, from photo to, 248–250  
skin softening, 139–141, 225–230  
sky  
    replacing, 259–260  
    selecting, 97, 109–111  
Slice tool, 261–264  
sliders, resetting, 99  
slideshows, 312–315  
smart collections, 55–56  
Smart Objects  
    Adobe Elements and, 169  
    new Photoshop tool, 5  
    sent from Lightroom to Photoshop, 169–173  
    snapshots, 169–173  
smoothing skin, 226–227  
Smoothness slider, 84  
snapshots  
    Elements and, 169  
    Lightroom/Photoshop work with, 169–173  
    used for variations, 89–90  
social media, 259, 309  
soft brush, 272–275  
soft glow, 241  
soft proofing, 151, 313  
softening, 113  
Solo mode, 36–37  
Source panels, 31

- special effects
  - artistic portrait treatments, 241–250
  - creative blur effects, 250–258
  - Instagram carousel, 259–264
  - lesson on, 238–265
  - Photoshop, 11
  - review of, 265
- Spot Healing brush, 209
- Spot Removal tool
  - distraction removal with, 116–119
  - flyaway hair removal, 142–143
  - Healing and Cloning settings, 9
- sRGB, 152, 305
- stacks, 154
- standard option, 29
- star ratings, adding, 58–59
- stock images, 201
- storage
  - collection locations, 50
  - tips for, 18–20
- straight-edged selections, 184–187
- stylizing portraits, 241–250
- subject. *See also* Select Subject
  - adding motion to, 256–258
  - group photo, 282
- Select Subject in Lightroom, 109–111
- Select Subject in Photoshop, 190–192
- subtracting masks, 114–115
- support resources, 14
- Survey view, 37
- syncing changes, 90–92
- syncing collections, 57–58

## T

- target collection, 56–57
- Targeted Adjustment tool (TAT), 121
- teeth, lightening, 135–137
- text
  - adding, for exports, 309
  - mode, 48
  - Photoshop tools for, 11
- texture
  - brush, 139–141
  - combining photos for, 269–281
  - slider, 140
- thumbnails
  - Develop tools for, 51–52
  - selecting, 39
  - size adjustment, 22, 36
  - stacks of, 154
  - storage space for, 13
- TIFF
  - file size, 151
  - Lightroom to Photoshop sends, 165–168
- Tilt-Shift filter, 252–254

- Tone control, 51
- tones
  - adjusting, 80
  - dark and light, 73
  - mapping, 286
  - soft proofing, 313
- toolbar, Library module, 37
- transformations
  - lens, 86–88
  - Photoshop selections, 180–190

## V

- variations, image, 88–90
- vector-based masks, 98
- Vibrance, 79–80
- video demos, 228, 311
- video storage, 19
- view, customizing, 35–40
- Vignetting, post-crop, 103, 127–129, 164
- virtual copies, 88–89, 123
- Visualize Spots, 117
- Vivid profile, 70

## W

- watermarks, 300–301
- web edition, 3
- web galleries, 312–315
- Wendt, Max, 139–140
- white balance, 71–72
- Whites, adjusting, 77–79
- whites of eyes, 137–138
- Windows instructions, 2
- workflow
  - iterative culling, 46
  - Lightroom, 4
- workflow, Lightroom-Photoshop round trip
  - lesson on, 148–175
  - Lightroom/Camera Raw syncing, 157–158
  - program integration, 150–157
  - raw file sending, 159–165
  - review of, 174–175
  - sending Smart Objects, 169–173
- wrinkles, reducing, 143–144, 226