

# My Samsung Galaxy S7<sup>®</sup>



que

Craig James Johnston  
Eric Butow

FREE SAMPLE CHAPTER

SHARE WITH OTHERS



# My Samsung Galaxy S7<sup>®</sup>

Craig James Johnston  
Eric Butow

**que**<sup>®</sup>

800 East 96th Street,  
Indianapolis, Indiana 46240 USA

# My Samsung Galaxy S®7

Copyright © 2016 by Pearson Education, Inc.

All rights reserved. No part of this book shall be reproduced, stored in a retrieval system, or transmitted by any means, electronic, mechanical, photocopying, recording, or otherwise, without written permission from the publisher. No patent liability is assumed with respect to the use of the information contained herein. Although every precaution has been taken in the preparation of this book, the publisher and authors assume no responsibility for errors or omissions. Nor is any liability assumed for damages resulting from the use of the information contained herein.

ISBN-13: 978-0-7897-5763-0

ISBN-10: 0-7897-5763-X

Library of Congress Control Number: 2016939724

Printed in the United States of America

First Printing: June 2016

## Trademarks

All terms mentioned in this book that are known to be trademarks or service marks have been appropriately capitalized. Que Publishing cannot attest to the accuracy of this information. Use of a term in this book should not be regarded as affecting the validity of any trademark or service mark.

All Galaxy S7 images are provided by Samsung Electronics America.

## Warning and Disclaimer

Every effort has been made to make this book as complete and as accurate as possible, but no warranty or fitness is implied. The information provided is on an “as is” basis. The author and the publisher shall have neither liability nor responsibility to any person or entity with respect to any loss or damages arising from the information contained in this book.

## Bulk Sales

Que Publishing offers excellent discounts on this book when ordered in quantity for bulk purchases or special sales. For more information, please contact

**U.S. Corporate and Government Sales**

**1-800-382-3419**

**corpsales@pearsontechgroup.com**

For sales outside of the U.S., please contact

**International Sales**

**intlcs@pearson.com**

### Editor-in-Chief

Greg Wiegand

### Acquisitions Editors

Michelle Newcomb

Laura Norman

### Development Editor

Charlotte Kughen

### Managing Editor

Sandra Schroeder

### Project Editor

Mandie Frank

### Copy Editor

Charlotte Kughen

### Indexer

Ken Johnson

### Proofreader

Debbie Williams

### Technical Editor

Christian Kenyeres

### Editorial Assistant

Cindy Teeters

### Designer

Chuti Prasertsith

### Compositor

Trina Wurst

# Contents at a Glance

Prologue:	Getting to Know Your Galaxy S7 .....	3
<b>Chapter 1</b>	Making the S7 Your Own .....	47
<b>Chapter 2</b>	Making and Receiving Calls .....	101
<b>Chapter 3</b>	Managing Contacts .....	117
<b>Chapter 4</b>	Using the Calendar .....	131
<b>Chapter 5</b>	Browsing the Web .....	147
<b>Chapter 6</b>	Email and Text Messages .....	163
<b>Chapter 7</b>	Google Now and Navigation Using Google Maps .....	209
<b>Chapter 8</b>	Playing and Managing Music .....	225
<b>Chapter 9</b>	Taking and Sharing Photos .....	243
<b>Chapter 10</b>	Watching and Creating Videos .....	269
<b>Chapter 11</b>	Sharing and Synchronizing Data .....	295
<b>Chapter 12</b>	Working with Android Applications .....	325
<b>Chapter 13</b>	Books and Magazines .....	341
<b>Chapter 14</b>	Optimizing and Troubleshooting .....	353
<b>Chapter 15</b>	Using Your Samsung Galaxy S7 with an Android Wear Smartwatch .....	375
<b>Chapter 16</b>	Getting Fit with S Health .....	401
	Index .....	419

# Table of Contents

## **Prologue: Getting to Know Your Galaxy S7 3**

Your Galaxy S7's External Features .....	3
Getting to Know Your Galaxy S7 .....	4
Front .....	4
Back .....	5
Bottom .....	6
Gestures and Motions .....	7
First-Time Setup .....	9
Fundamentals of Android 6.01 and TouchWiz .....	18
The Lock Screen .....	18
The Home Screen .....	20
Work with Notifications .....	22
Create App Shortcuts .....	22
Create App Folders .....	23
Create a New Home Screen Pane and Remove an App Shortcut .....	24
Use the Touchscreen .....	24
Use the Keyboard .....	25
Dictation—Speak Instead of Type .....	29
Edit Text .....	29
Keyboard Tricks .....	31
Menus .....	32
Switch Between Apps .....	33
Run Multiple Apps on the Screen at the Same Time .....	33
Installing Synchronization Software .....	37
Install Android File Transfer (Apple Mac OS X) .....	38
Install Google Music Manager (Apple Mac) .....	39
Install Google Music Manager (Windows) .....	41
Configure Music Manager (Windows and Apple Mac) .....	42

## **1 Making the S7 Your Own 47**

Changing Your Wallpaper .....	48
Set Up Wallpaper from Gallery Pictures .....	49
Set Up Live Wallpaper .....	50
Set Up Wallpaper .....	51

Changing Your Keyboard .....	51
Adding Widgets to Your Home Screens .....	53
Add a Widget .....	53
Remove and Move a Widget .....	55
Setting the Language .....	56
Changing Accessibility Settings .....	57
Voice .....	58
Hearing .....	61
Dexterity and Interaction .....	62
Direction Lock .....	63
Direct Access .....	64
Notification Reminder .....	64
Answering/Ending Calls .....	65
Manage Accessibility .....	65
Adjusting Sound, Vibration, and Notification Settings .....	65
Adjust Sound and Vibration Settings .....	66
Adjust Notification Settings .....	68
Sound Quality and Effects .....	70
Do Not Disturb .....	71
Modifying Display Settings .....	73
Adjusting the S7 Edge Settings .....	76
Set Up Edge Panels .....	76
Edge Feeds .....	79
Edge Lighting .....	80
People Edge .....	81
Using Easy Home Screen Mode .....	84
Setting Privacy and Safety Options .....	84
Private Mode .....	85
Send SOS Messages .....	87
Changing Themes .....	88
Configuring Lock Screen and Security .....	90

Getting to Know the Phone App .....	101
Open and Navigate the Phone App .....	102
Call Log .....	103
Favorites .....	104
Contacts .....	104

Receiving a Call .....	105
Accept a Call .....	106
Reject a Call .....	107
Reject a Call and Send a Text Message .....	108
Handle Missed Calls .....	109
Making Calls .....	110
Dial Using Your Voice .....	110
Make Conference Calls .....	111
Configuring the Phone App .....	112

### **3 Managing Contacts 117**

Managing Contacts .....	117
Set Up Contacts Accounts .....	118
Add Contacts .....	120
Search for Contacts .....	126
Link Contacts .....	126
Use Contacts .....	128

### **4 Using the Calendar 131**

Managing Your Busy Schedule .....	131
Create Calendar Events .....	132
Use Calendar Views .....	136
View More Event Options .....	140
Add a Task to Your Calendar .....	141
View the Task List and Remove Tasks .....	143
View More Task Options .....	144

### **5 Browsing the Web 147**

Browsing to a URL .....	148
Searching the Web .....	149
Viewing Web Pages .....	151
Working with Bookmarks .....	152
Create a Bookmark .....	153
Delete a Bookmark from the Bookmarks List .....	154
Delete a Bookmark from the History List .....	155
Returning to Previously Visited Pages .....	156
Filling in Web Forms .....	157

Copying Text and Images from Web Pages .....	158
Copy a Block of Text .....	159
Copy an Image .....	160

## **6 Email and Text Messages 163**

Gmail .....	163
Add a Google Account .....	164
Add a POP3/IMAP Account .....	166
Navigate the Gmail App .....	170
Compose an Email .....	172
Read an Email .....	175
Customize Gmail App Settings .....	178
Email Application .....	183
Add a Work Email Account .....	183
Add a New POP3 or IMAP Account .....	186
Working with the Email App .....	190
Navigate the Email Application .....	190
Compose an Email .....	190
Add Attachments to a Message .....	191
Read Email .....	192
Change Email App Settings .....	194
SMS and MMS .....	199
Get to Know the Messages App .....	199
Manage Settings for the Messages App .....	201
Compose Messages .....	203
Attach Files to Messages .....	204
Receive Messages .....	205

## **7 Google Now and Navigation Using Google Maps 209**

Google Now .....	209
Set Up Google Now .....	211
Google Maps .....	215
Get Directions .....	216
Configure Google Maps Settings .....	220
Use Offline Google Maps .....	222



**8 Playing and Managing Music 225**

Purchasing Music in Google Play Music .....	226
Playing Songs and Creating a Playlist .....	231
Adding a Podcast App .....	235

**9 Taking and Sharing Photos 243**

Using the Camera .....	243
Change Quick Settings .....	244
View and Change Pro Settings .....	247
Set Camera Modes .....	253
Change Camera Settings .....	254
Take a Photo .....	257
Navigating Image Viewer .....	258
Working with Gallery .....	261
Manage Photos with Gallery .....	261
Email Photos from Gallery .....	264
Creating Screen Captures .....	266

**10 Watching and Creating Videos 269**

Downloading Movies and TV Shows .....	269
Download a TV Show .....	270
Play the TV Show .....	273
Shop for a Movie .....	273
Playing Videos .....	275
Viewing YouTube Videos .....	276
Recording Video .....	281
Change Camera App Settings .....	282
View and Change Basic Settings .....	284
View and Change Pro Settings .....	285
View Recorded Videos .....	289

**11 Sharing and Synchronizing Data 295**

Connecting Using Wi-Fi Direct .....	295
Set Up Wi-Fi Direct .....	296
Printing Wirelessly .....	298
Connect a Wi-Fi Printer .....	298
Connect a Bluetooth Printer .....	299

Sharing Files .....	302
Use the Google Drive App .....	302
Find Other Cloud Services .....	312
Sharing Music and Video .....	313
Copy Files with Windows Media Player .....	313
Connect as a Mass Storage Device .....	315
Samsung Smart Switch for PCs and Macs .....	317
Backing Up and Restoring Your Galaxy S7 .....	322
Ensure Automatic Google Account Backup .....	322

## 12 Working with Android Applications **325**

Configuring Google Wallet .....	326
Navigating the Google Play Store .....	326
Install Free Applications .....	328
Buy Applications .....	329
Manage Apps .....	332
Adjust Google Play Settings .....	333
Galaxy Apps .....	335
Add a Payment Method for Galaxy Apps .....	336
Install Free Applications .....	336
Buy Applications .....	337

## 13 Books and Magazines **341**

Books .....	341
Navigate the Play Books App .....	342
Buy Books .....	343
Read Books .....	344
Magazines and Newspapers .....	348
Purchase or Subscribe to Publications .....	349
Read a Publication .....	350

## 14 Optimizing and Troubleshooting **353**

Finding Accessories .....	354
Pairing Bluetooth Devices .....	355
Pair a Bluetooth Device .....	355
Maintaining Your Galaxy S7 and S7 Edge .....	356
Updating Galaxy S7 Software .....	357

## My Samsung Galaxy S7

Extending Battery Life .....	358
Monitor Power Usage .....	359
Adjust Screen Brightness .....	360
Utilize Sleep Mode .....	361
Conserve Power by Turning Off Wi-Fi .....	361
Conserve Power by Turning Off Bluetooth .....	362
Conserve Even More Power Using Power Saving Modes .....	363
Solving Random Galaxy S7 Issues .....	366
Difficulty Turning Your Galaxy S7 On or Off .....	366
Touchscreen Becomes Unresponsive .....	366
Force Stop an App .....	367
Battery Does Not Charge .....	368
Landscape Orientation Does Not Work .....	368
Troubleshooting Wi-Fi Accessibility Problems .....	369
Make Sure Wi-Fi Is Activated .....	369
Check Your Range .....	370
Reset the Galaxy S7 Device .....	370
Getting Technical Help .....	372
Contact Your Cellular Provider or Samsung .....	373
Locate the Galaxy S7 Model Number .....	373

## Using Your Samsung Galaxy S7 with an Android Wear Smartwatch

375

Setting Up Your Android Wear Watch .....	376
Choosing Settings for Your Android Wear Watch .....	378
Navigate the Android Wear App .....	379
Using Your Android Wear Watch .....	387
Navigate Your Watch .....	388
Use Your Watch and Run Watch Apps .....	392
Use Watch Functions and Watch Apps .....	392

<b>16</b>	<b>Getting Fit with S Health</b>	<b>401</b>
	Working with S Health .....	401
	Start S Health .....	402
	Add and Remove Trackers .....	404
	Sync Your Health Data and Change Settings .....	405
	Using Activity Trackers .....	407
	Set Daily Step Goals and Track Your Steps .....	408
	Track Your Sleep .....	412
	Viewing Partner Apps and Settings .....	415
	Setting Goals and Creating Running Programs .....	416
<b>Index</b>		<b>419</b>

## About the Authors

**Craig James Johnston** has been involved with technology since his high school days at Glenwood High in Durban, South Africa, when his school was given some Apple ][ Europluses. From that moment, technology captivated him, and he has owned, supported, evangelized, and written about it.

Craig has been involved in designing and supporting large-scale enterprise networks with integrated email and directory services since 1989. He has held many different IT-related positions in his career, ranging from sales support engineer to mobile architect for a 40,000-smartphone infrastructure at a large bank.

You can see Craig's previously published work in his books *Professional BlackBerry*, *My iMovie*, and many other *My* series books that cover devices by BlackBerry, Palm, HTC, Motorola, Samsung, and Google.

Craig also enjoys high-horsepower, high-speed vehicles and tries very hard to keep to the speed limit while driving them.

Originally from Durban, South Africa, Craig has lived in the United Kingdom, the San Francisco Bay Area, and New Jersey, where he now lives with his wife, Karen, and a couple of cats.

Craig would love to hear from you. Feel free to contact Craig about your experiences with *My Samsung Galaxy S7* at <http://www.CraigsBooks.info>.

All comments, suggestions, and feedback—both positive and negative—are welcome.

**Eric Butow** began writing books in 2000 when he wrote *Master Visually Windows 2000 Server*. Since then, Eric has authored or coauthored 26 other books. Those books include Addison-Wesley's *User Interface Design for Mere Mortals*, Amacom's *How to Succeed in Business Using LinkedIn*, Wiley Publishing's *Droid Companion*, Wiley Publishing's *Google Glass For Dummies*, Que Publishing's *Blogging to Drive Business*, Second Edition, and Que Publishing's *My Samsung Galaxy Tab S2*.

Eric lives in Jackson, California. He has a master's degree in communication from California State University, Fresno, and is the owner of Butow Communications Group (BCG), an online marketing ROI improvement firm.

Website: <http://butow.net>

LinkedIn: <http://linkedin.com/in/ebutow>

## Dedication

*"I love deadlines. I like the whooshing sound they make as they fly by."*  
—Douglas Adams

*To everyone who never gave up on me.*  
—Eric Butow

## Acknowledgments

We would like to express our deepest gratitude to the following people on the *My Samsung Galaxy S7* team who all worked extremely hard on this book:

- Michelle Newcomb, our acquisitions editor, who worked with us to give this project an edge
- Christian Kenyeres, our technical editor, who double-checked our writing to ensure the technical accuracy of this book
- Charlotte Kughen, who edited the manuscript skillfully
- Mandie Frank, who kept the book project on schedule
- Trina Wurst, who combined the text and art into colorful pages

## We Want to Hear from You!

As the reader of this book, *you* are our most important critic and commentator. We value your opinion and want to know what we're doing right, what we could do better, what areas you'd like to see us publish in, and any other words of wisdom you're willing to pass our way.

We welcome your comments. You can email or write to let us know what you did or didn't like about this book—as well as what we can do to make our books better.

*Please note that we cannot help you with technical problems related to the topic of this book.*

When you write, please be sure to include this book's title and author as well as your name and email address. We will carefully review your comments and share them with the authors and editors who worked on the book.

Email: [feedback@quepublishing.com](mailto:feedback@quepublishing.com)

Mail: Que Publishing  
ATTN: Reader Feedback  
800 East 96th Street  
Indianapolis, IN 46240 USA

## Reader Services

Register your copy of *My Samsung Galaxy S7* at [quepublishing.com](http://quepublishing.com) for convenient access to downloads, updates, and corrections as they become available. To start the registration process, go to [quepublishing.com/register](http://quepublishing.com/register) and log in or create an account\*. Enter the product ISBN, 9780789757630, and click Submit. Once the process is complete, you will find any available bonus content under Registered Products.

\*Be sure to check the box that you would like to hear from us in order to receive exclusive discounts on future editions of this product.

*This page intentionally left blank*



Samsung Galaxy S7



Samsung Galaxy S7 edge



In this chapter, you become familiar with the external features of the Galaxy S7 and the basics of getting started with the Android operating system. Topics include the following:

- Getting to know your Galaxy S7's external features
- Learning gestures and motions
- Setting up your Galaxy S7 for the first time
- Learning the fundamentals of Android 6.01 (Marshmallow) and TouchWiz
- Installing desktop synchronization software

## Prologue

# Getting to Know Your Galaxy S7

Before you start customizing your Galaxy S7 and working with apps, you should examine the external features, device features, and the Android 6.01 operating system.

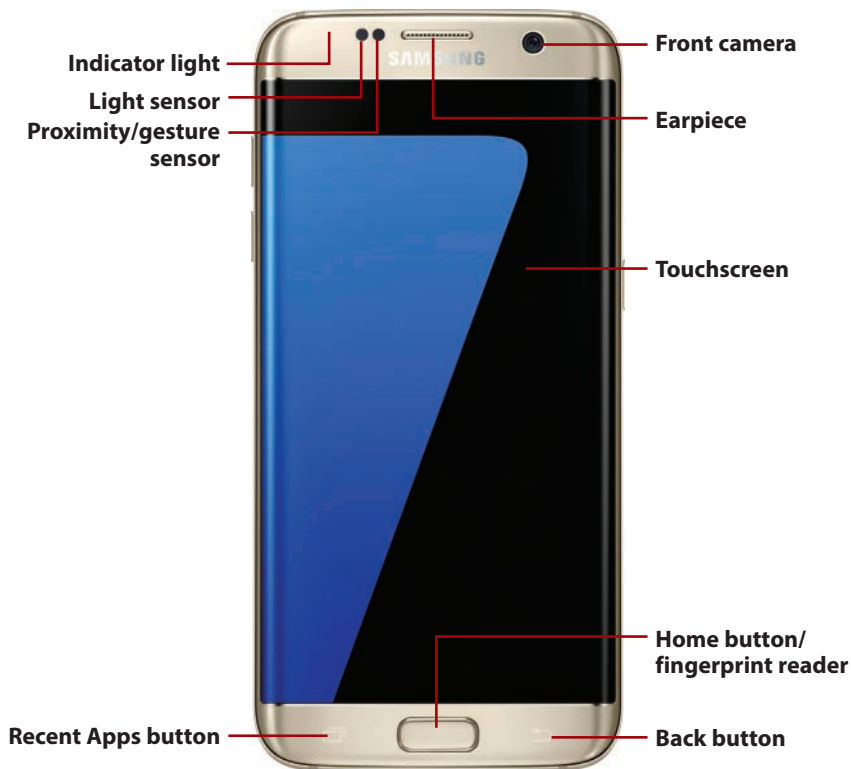
In addition to Android 6.01 (Marshmallow), this chapter covers the Samsung TouchWiz interface, which is overlaid on top of Android to adjust the way things look and function.

## Your Galaxy S7's External Features

Becoming familiar with the external features of your Galaxy S7 is a good place to start because you will be using them often. This section covers some of the technical specifications of your Galaxy S7, including the touchscreen and camera. There are two versions of the Samsung Galaxy S7: the S7 and the S7 edge. With the exception of a few extra features provided by the curved screen on the S7 edge, the functionality and look and feel of the interface on the two phones are exactly the same.

# Getting to Know Your Galaxy S7

## Front



- **Proximity/gesture sensor**—Detects when you place your Galaxy S7 against your head to talk, which causes it to turn off the screen so that your ear doesn't inadvertently activate any onscreen items. This sensor also allows you to use gestures (in conjunction with the accelerometer). Gestures are covered later in the Prologue.
- **Light sensor**—Adjusts the brightness of your Galaxy S7's screen based on the brightness of the ambient light.
- **Earpiece**—The part you hold against your ear while on a call.
- **Indicator light**—Indicates new events (such as missed calls, new Facebook messages, and new emails). This indicator light is invisible until it illuminates.
- **Front camera**—A 5.0-megapixel front-facing camera that you use for video chat, taking self-portraits, and even unlocking your Galaxy S7 using your face.
- **Touchscreen**—On the Galaxy S7, a 5.1" 1440x2560 pixel Quad HD Super AMOLED (Super Active-Matrix Organic Light-Emitting Diode) screen that

incorporates capacitive touch. On the Galaxy S7 edge, a 5.5" 1440x2560 pixel Quad HD Super AMOLED (Super Active-Matrix Organic Light-Emitting Diode), dual-edge screen that incorporates capacitive touch.

- **Back button**—Takes you back one screen when you're using an application or menu. This is a touch-sensitive button.
- **Recent Apps button**—Shows you a list of apps you recently used. You can then touch to jump to them or swipe them off the screen to close them. Touch and hold to see additional options for the current screen. The Recent Apps button replaces the Menu button on previous Galaxy S series phones.
- **Home button/fingerprint reader**—Takes you to the Home screen. The application that you are using continues to run in the background. Press twice to launch the Camera app. Press and hold to launch Google Now. A fingerprint reader is built in to the Home button; you can read more about it in Chapter 1, "Making the S7 Your Own."

## Back



- **Volume up/down buttons**—Enable you to control the audio volume on calls and while playing audio and video.

- **Power button**—Allows you to wake up your Galaxy S7 by pressing once. Press and hold for one second to reveal a menu of choices. The choices enable you to power off your S7, restart your S7, or put it into Emergency mode. In Emergency mode, your S7 greatly reduces battery usage and starts reporting its location to a chosen contact.
- **Rear camera**—A 12-megapixel camera with autofocus and Optical Image Stabilization (OIS) that takes clear pictures close up or far away.
- **LED (light-emitting diode) camera flash**—Helps to illuminate the surroundings when you're taking pictures in low light.
- **Heart rate sensor**—While using the S Health app, place your finger over the heart rate sensor to allow S Health to detect your heart rate.
- **SIM card and microSD card tray**—Use the SIM card tray ejection tool provided in the box to eject the SIM card tray and insert a new or replacement SIM card. The SIM card tray also includes a place to insert a microSD memory card. This allows you to expand the memory on your S7 up to 200 Gigabytes.
- **Noise-canceling microphone**—Use in conjunction with the regular microphone to reduce background noise during phone calls. This microphone is also used when you record videos.

## Bottom



- **Micro USB 2 port**—You can use the Micro USB 2 port to synchronize your Galaxy S7 to your desktop computer and charge it.
- **Microphone**—You use the microphone when you are on a call and holding your Galaxy S7 to your ear.
- **Speaker**—The speaker is used when you use the speakerphone function while on a phone call, and it is also used to play all audio, including notifications, music, and audio from videos.
- **3.5mm headphone jack**—Plug in your Galaxy S7 or third-party headset to enjoy music and talk on the phone.

# Gestures and Motions

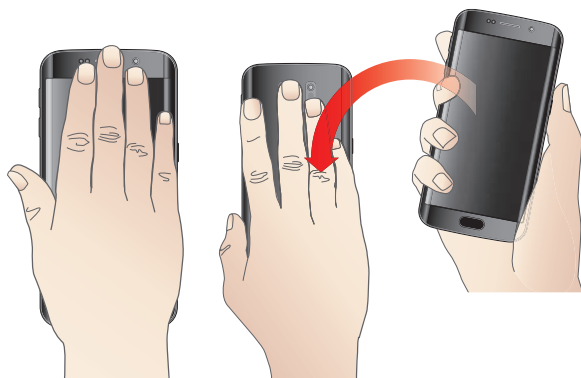
Gestures and motions allow you to quickly use certain functions or features by making hand gestures or moving the S7 in a specific way.



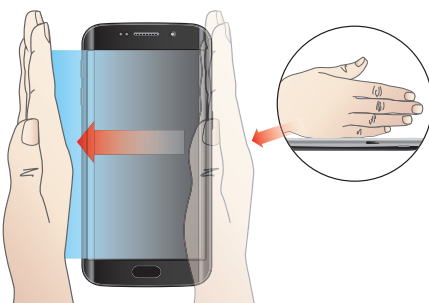
- **Direct Call**—While you are looking at a missed call, reading an SMS (text message) from someone, or viewing someone’s contact information, you can lift your S7 to your ear and hold it there to dial the phone number being viewed.



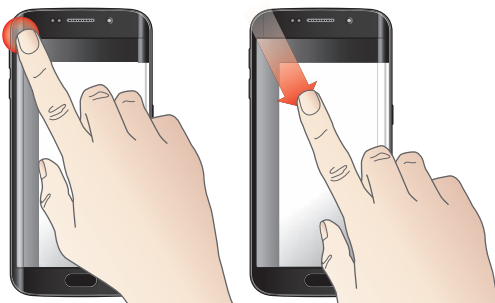
- **Smart Alert**—If you have missed calls or messages, when you pick up your S7 from a flat surface, it vibrates.



- **Easy Mute**—To mute incoming calls and alarms, either place your hand over the screen or turn your S7 over.



- **Palm Swipe to Capture**—You can capture a screenshot by holding your palm perpendicular to the screen, touching it on the screen and swiping it from left to right or right to left. The captured screenshot goes to the Screenshots album, which you can view using the Gallery or Photos app.



- **Pop-up View**—Swipe diagonally down from the top-left of the screen to make the app you are using switch the Pop-up view where it reduces in size to a smaller on-screen window. Read more about Pop-up view later in this Prologue in the “Run Multiple Apps on the Screen at the Same Time” section.

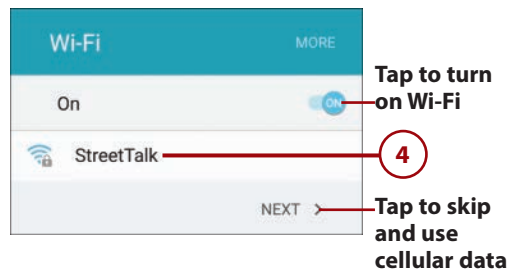
# First-Time Setup

Before setting up your new Samsung Galaxy S7, you should have a Google account because your Galaxy S7 running Android is tightly integrated with Google. When you have a Google account, you can store your content—including any books and music you buy or movies you rent—in the Google cloud. If you do not already have a Google account, go to <https://accounts.google.com> on your desktop computer and sign up for one.

1. Press and hold the Power button until you see the animation start playing (not shown).
2. Tap to change your language if needed.
3. Tap Start to continue.
4. Tap a Wi-Fi network you want to connect to during setup. If you'd rather not connect to a Wi-Fi network, tap Next and continue at step 8.

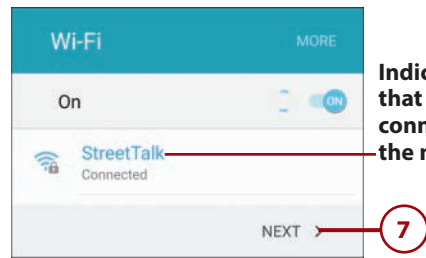
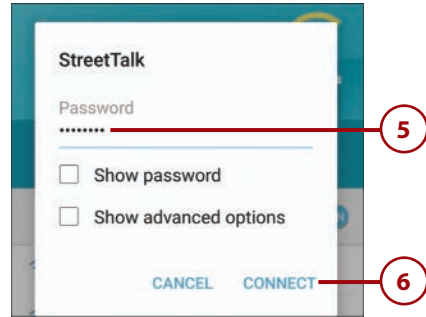
## Why Use Wi-Fi During Setup?

As you go through the first-time setup of your S7, you may choose to restore a backup of a previous device to your S7, and at the end of the device setup, a number of apps may need to be updated. Both of these activities can use a lot of data. Using Wi-Fi speeds up these activities as well as saves you the cost of the cellular data charges. Although you do not have to connect to a Wi-Fi network for device setup, it is advisable.





5. Enter the password for the Wi-Fi network using the onscreen keyboard.
6. Tap Connect. Your Galaxy S7 connects to the Wi-Fi network.
7. Tap Next.

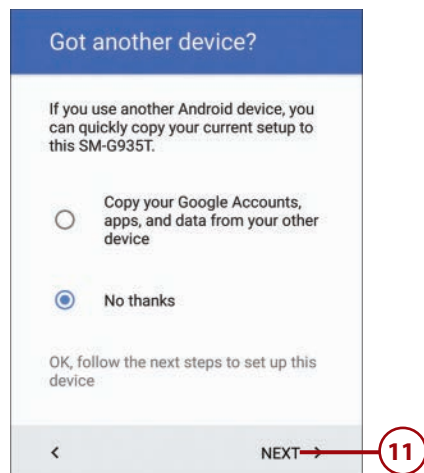
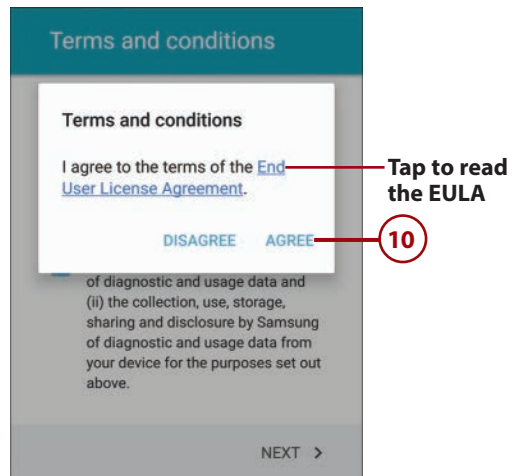
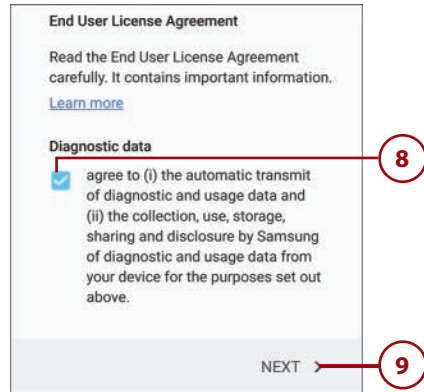


## >>> Go Further

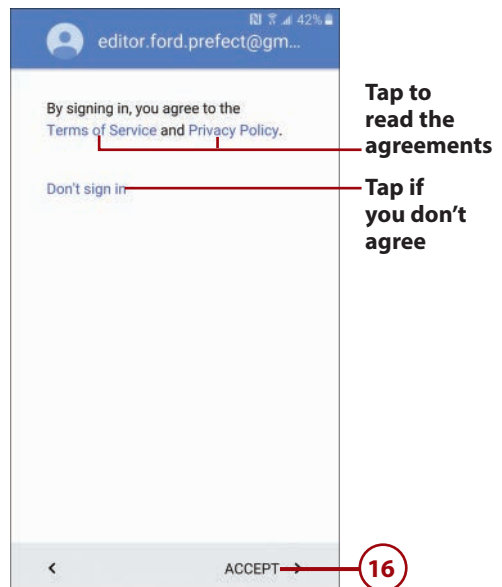
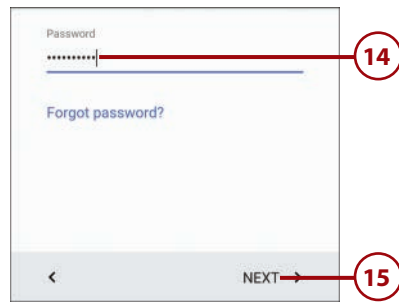
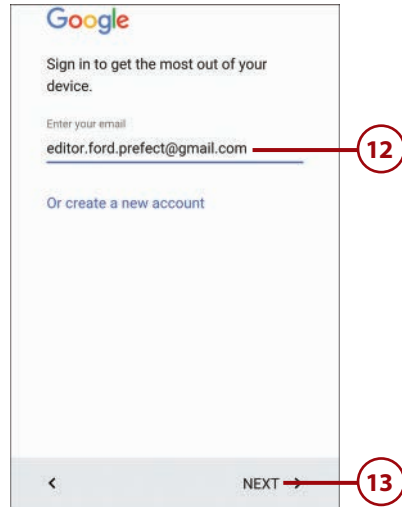
### SMART NETWORK SWITCH

Smart Network Switch is a feature that, once enabled, allows your S7 to seamlessly switch between the two Wi-Fi bands (2.4GHz and 5GHz) and cellular data to maintain a stable Internet connection. Your S7 constantly analyzes its connection to the Internet and switches between Wi-Fi networks operating on 2.4GHz and 5GHz to provide the best connection, and if the Wi-Fi connectivity becomes poor, it switches to the cellular data network. Bear in mind that with this option enabled you might start seeing higher cellular data usage, especially in areas where Wi-Fi is unstable, slow, or overcrowded. To enable Smart Network Switch, after your device is set up, tap Settings, Wi-Fi, More, Smart Network Switch.

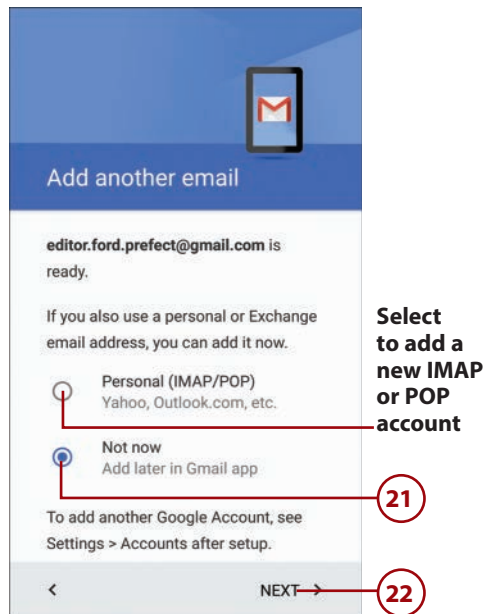
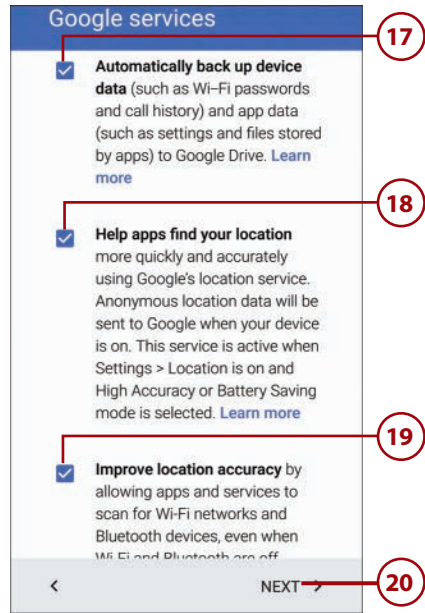
8. Check the box to allow Samsung to collect diagnostic and usage data from your S7.
9. Tap Next.
10. Tap Agree after you have read and understood the End User License Agreement (EULA).
11. If you have another Android device (tablet or smartphone) running Android 5.0 (Lollipop) or later, and you want to transfer the data from it to your new phone, select Copy your Google Accounts, apps, and data from another device, tap Next, and follow the instructions on the following screens, or select No thanks, and tap Next to continue.



12. Enter your Google account email address (your Gmail address).
13. Tap Next.
14. Enter your Google account password.
15. Tap Next to continue.
16. Tap Accept to continue.



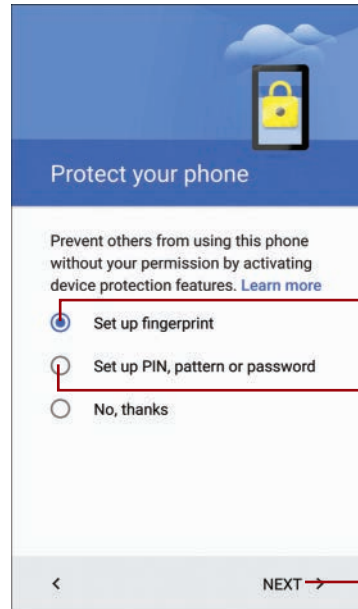
17. Check this box if you want to back up your phone's data so that it can be restored to a new Android phone or smartphone in the future.
18. Check this box if you are okay with Google collecting information about your geographic location at any time. Although Google keeps this information safe, if you are concerned about privacy rights, you should uncheck this box.
19. Check this box if you are okay with your phone scanning for Wi-Fi networks even if you have the Wi-Fi radio turned off. This helps improve location accuracy.
20. Tap Next to continue.
21. Select Not Now. Chapter 6, "Email and Text Messages," covers adding IMAP and POP accounts.
22. Tap Next.



23. Tap Set Up Fingerprint. If you choose not to set any phone protection (not recommended), tap No Thanks, and skip to step 32.
24. Tap Next.
25. Tap PIN to choose to use a numeric PIN as your fingerprint backup unlock method. This example uses a PIN; however, you can choose to use a pattern or password as your fingerprint backup unlock method.

### Why Must I Use a PIN, Pattern, or Password When Choosing Fingerprint?

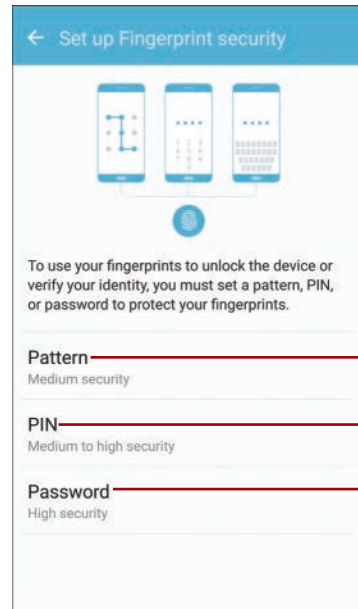
When you choose to use your fingerprint to unlock your Galaxy S7, you must first choose a backup unlock method. This method is used as the only method of unlocking your S7 after you restart it, or if your fingerprint cannot be read by the fingerprint sensor.



23

Select to set a PIN, pattern, or password

24

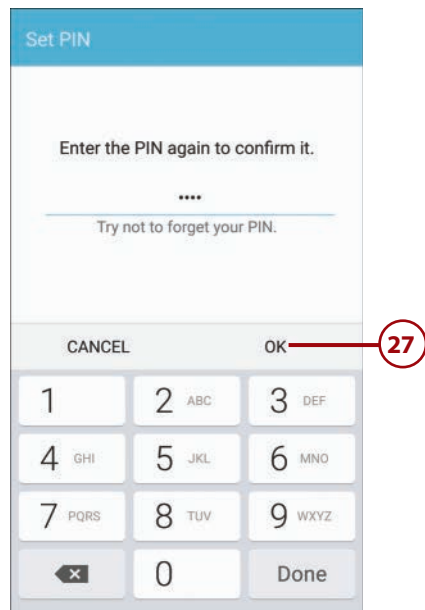
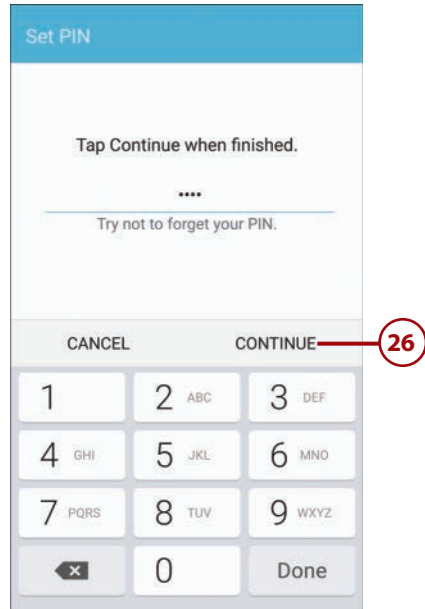


Tap Pattern to use an on-screen pattern

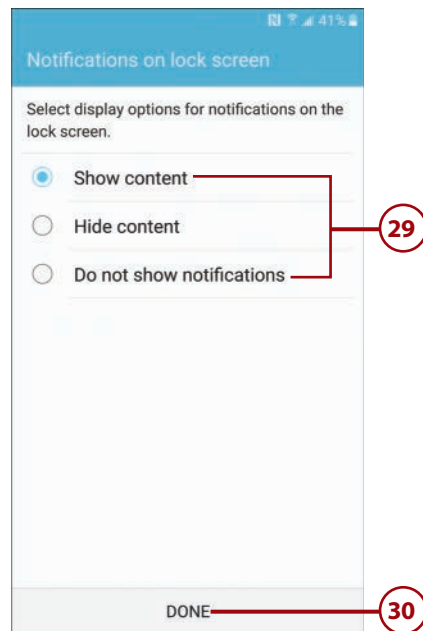
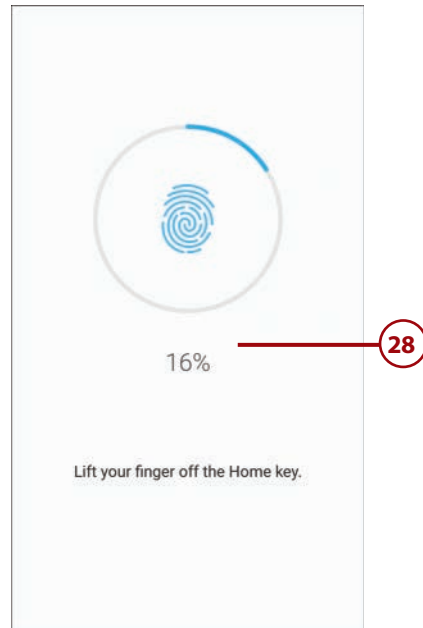
25

Tap Password to use a password

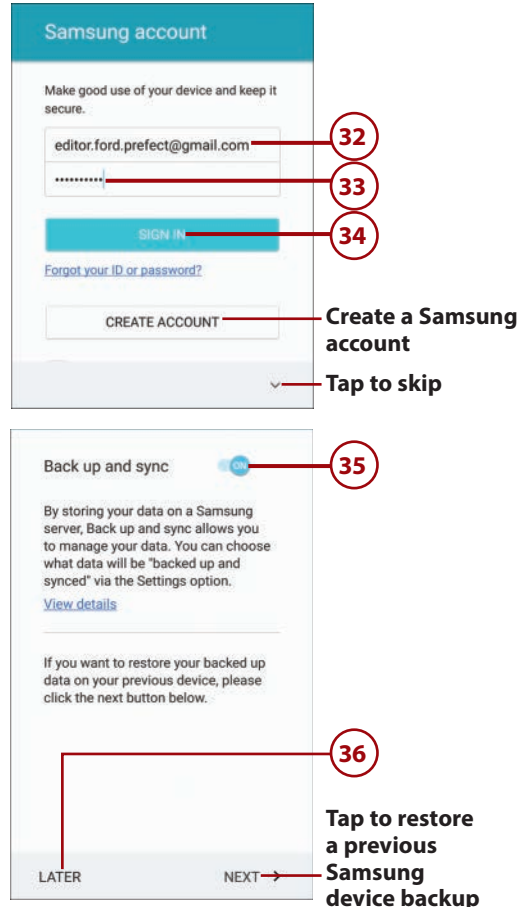
26. Enter a numeric PIN and tap Continue.
27. Re-enter the same numeric PIN and tap OK.



28. Follow the on-screen instructions that walk you through placing your finger on the Home key and then lifting it off the Home key repeatedly until your S7 has fully captured your fingerprint.
29. Choose whether you want notifications to be displayed on the Lock screen while your phone is locked. You can choose to show notifications and their content, notifications with no content, or to hide all notifications.
30. Tap Done.
31. Tap Next on the screen lock confirmation screen (not shown).



32. Enter the email address you used for your Samsung account.
33. Enter your Samsung account password.
34. Tap Sign In.
35. Move the slider to on to enable automatically backing up your data to your Samsung account.
36. Tap Later. For this example we are not restoring a backup from a previous Samsung device. However, if you would rather restore a backup, tap Next and follow the steps, then continue at step 37.



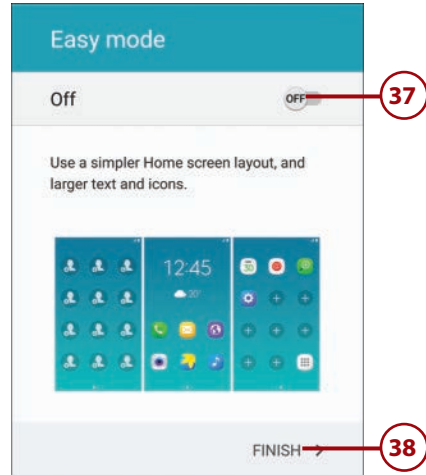
## >>> Go Further

### DO I NEED A SAMSUNG ACCOUNT?

Android was designed to be used with a Google account. That Google account enables you to access the Google ecosystem of Android apps, music, movies, and books; plus, your phone's settings are backed up to the Google cloud. If you change devices, your new device reverts to the way you had your old device set up. A Samsung account does a similar thing, but it uses the Samsung ecosystem. If you would like to take advantage of the extra Samsung services on your S7, such as the Galaxy app store, the ability to locate your lost device, or to keep track of your S Health diet and health information, you should sign up for a Samsung account.



37. Tap to turn the switch on if you want your S7 to use Easy mode. Easy mode uses a simplified Home screen layout and enlarges the text and size of the app icons. You can always disable Easy mode later if you decide it's not for you.
38. Tap Finish to complete your S7's setup. Depending on the wireless provider you are using, after you finish the device setup, you may see some extra screens that are specific to your wireless provider.



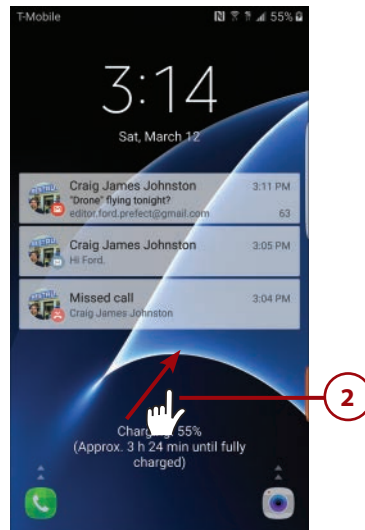
## Fundamentals of Android 6.01 and TouchWiz

Your Galaxy S7 is run by an operating system called Android. Android was created by Google to run on any smartphone, and your Galaxy S7 uses a version called Android 6.01 (or Marshmallow). Samsung has made many changes to this version of Android by adding extra components and modifying many standard Android features. They call this customization TouchWiz.

### The Lock Screen

If you haven't used your Galaxy S7 for a while, the screen goes blank to conserve battery power. This task explains how to interact with the Lock screen.

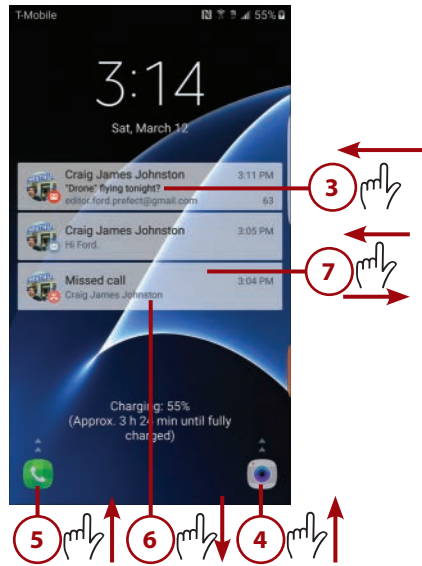
1. Press the Power button or Home button to wake up your Galaxy S7 (not shown). It is better to press the Home button, especially if you are making use of the fingerprint reader to unlock your S7.
2. Slide your finger across the screen in any direction to unlock your Galaxy S7.



## Unlocking Your S7

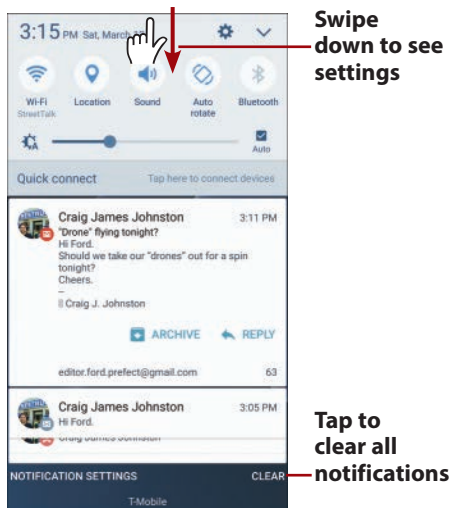
Step 2 assumes that you are using the swipe-to-unlock method of unlocking your S7, which is why we direct you to swipe the screen; however, you may have chosen to use a more secure method of locking your S7 including using a pattern, a numeric PIN, a password, or even your fingerprint. If you are using your fingerprint to unlock your S7, and just want to see the notifications on your Lock screen without actually unlocking your S7, then you should either press the Power button or press the Home button using a finger that you have not scanned with the fingerprint reader.

3. Tap a notification, such as a missed call or new email notification, and then swipe the screen to unlock and go directly to the call log or email message.
4. Swipe up from the Camera icon to launch the Camera.
5. Swipe up from the Phone icon to launch the Phone.
6. Swipe the notifications down if you want to see more of them.
7. Swipe the notifications left or right to dismiss them.



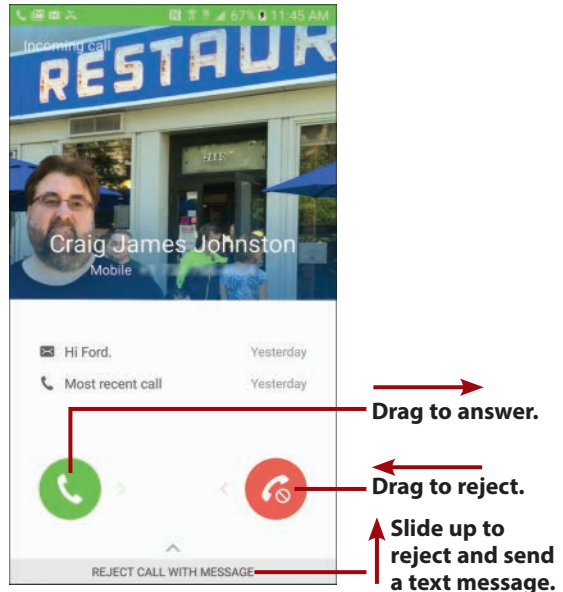
## Working with Settings on the Lock Screen

You can work with settings right on the Lock screen. Swipe down from the top of the screen to show the Quick Settings. You see the Quick Settings plus any notifications. Tap Clear to clear all notifications.



## Answering a Call from the Lock Screen

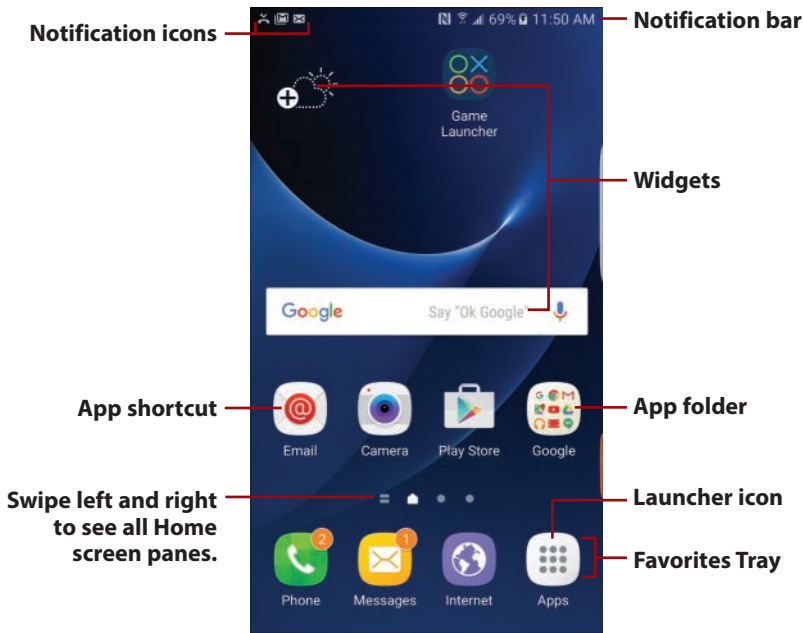
If your Galaxy S7 is locked when a call comes in, you have three choices: Drag the green icon to the right to answer the incoming call; drag the red icon to the left to reject the incoming call and send it straight to voicemail; or drag up from the bottom of the screen to reject the call and send a preset text message (SMS) to the caller.



## The Home Screen

After you unlock your Galaxy S7, you are presented with the Home screen. Your Galaxy S7 has four Home screen panes (although you can create more). The Home screen panes contain application shortcuts, a Launcher icon, Notification bar, Shortcuts, Favorites Tray, and widgets.

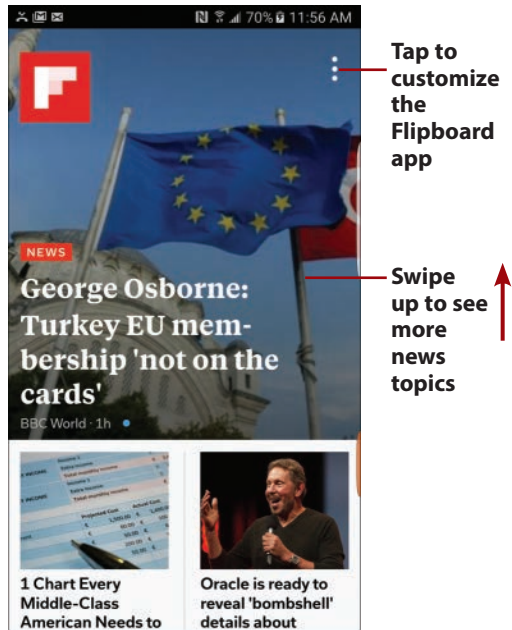
- **Notification bar**—The Notification bar shows information about Bluetooth, Wi-Fi, and cellular coverage, as well as the battery level and time. The Notification bar also serves as a place where apps can alert or notify you using notification icons.
- **Notification icons**—Notification icons appear in the Notification bar when an app needs to alert or notify you of something. For example, the Phone app can show the Missed Calls icon, indicating that you missed a call.
- **Widgets**—Widgets are applications that run directly on the Home screens. They are specially designed to provide functionality and real-time information. An example of a widget is one that shows the current weather or provides a search capability. Widgets can be moved and sometimes resized.
- **App shortcut**—When you tap an app shortcut, the associated app launches.
- **App folders**—You can group apps together in a folder as a way to organize your apps and declutter your screen.
- **Favorites Tray**—The Favorites Tray is visible on all Home screen panes. You can drag apps to the Favorites Tray so that they are available no matter which Home screen pane you are looking at. You can rearrange or remove apps in the Favorites Tray.



- **Launcher icon**—Tap to show application icons for all applications that you have installed on your Galaxy S7.

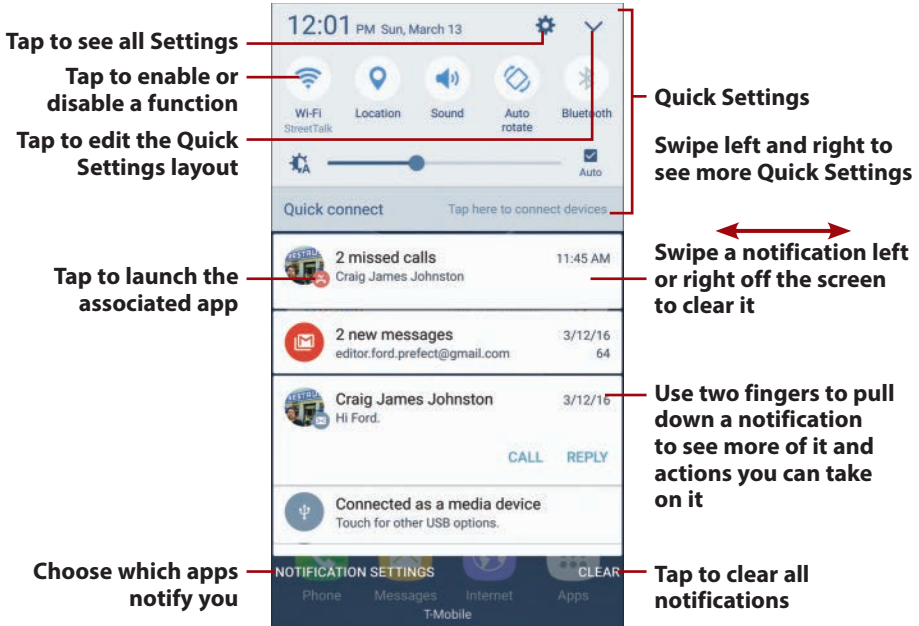
## The Special Home Screen Pane: Flipboard Briefing

If you swipe all the way to the left-most Home screen pane, you see the Flipboard app's Briefing view. The Flipboard app is a portal for news including business, technology, celebrity, science, entertainment, style, food, and travel. Your S7 provides you with the Flipboard app's Briefing view. Scroll up and down to see all news feeds. Tap the Menu icon to customize each news topic, rearrange the topic layout, and install the full Flipboard app. Swipe left to return to the first Home screen pane.



## Work with Notifications

To interact with notifications that appear in the Notification bar, place your finger above the top of the screen and drag to pull down the Notification bar and reveal the notifications. Swipe individual notifications off the screen to the left or right to clear them one by one, or tap Clear to clear all of them at once. The Notification bar also includes Quick Settings, such as the ability to turn on or off Wi-Fi or Bluetooth.

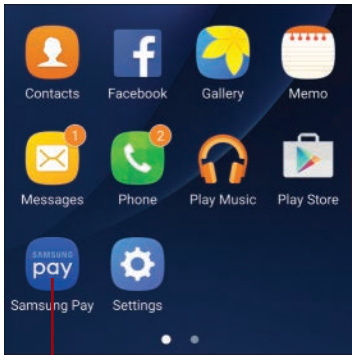


## What Are Quick Settings?

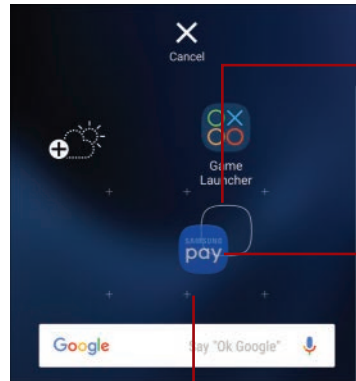
Quick Settings are icons that allow quick on/off actions. Examples are turning Wi-Fi on or off and turning Bluetooth on or off. To change the settings of a particular function, touch and hold on the icon for that function. Tapping the down arrow enables you to see all of the possible Quick Settings icons, rearrange the Quick Settings icon positions, and choose which icons are visible.

## Create App Shortcuts

Tap the Launcher icon to see all of your apps. (Refer to the figure in “The Home Screen” section for help identifying the Launcher icon.) Touch and hold on the app you want to make a shortcut for. After the Home screen appears, drag the app shortcut the location you want the shortcut to be on the Home screen, drag it to an app folder, or drag it left or right off the screen to move between Home screen panes. Release the icon to place it.



**Touch and hold an app icon**

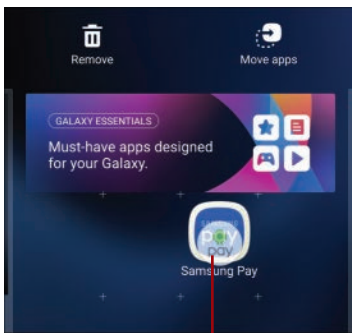


**Drag between Home screen panes**

**Drag to where you want the icon and release it**  
**Drag the icon to the right-most pane to create a new Home screen pane and place the icon on it**

## Create App Folders

To create a new app folder, touch and hold the first app shortcut you want in your folder and drag it on top of the second app shortcut you want in your folder. After you give your app folder a name, tap outside the folder to see the folder on your Home screen. Now you can drag other app shortcuts into that folder. To open the folder, tap it to reveal the shortcuts in that folder.

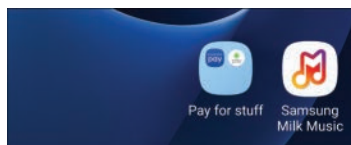


**Drag one app shortcut onto another**



**Give your folder a name**

**Tap to change the folder background color and text color**  
**Tap outside the box to add the folder**

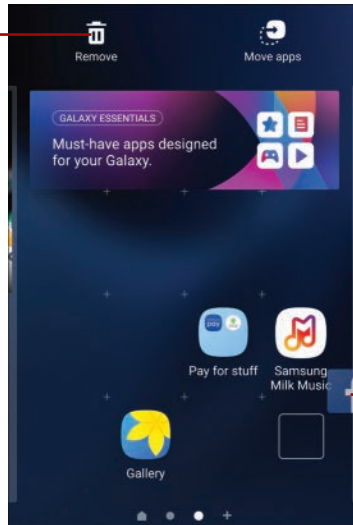


**Drag other app shortcuts to the folder**

## Create a New Home Screen Pane and Remove an App Shortcut

If you want to create a new Home screen pane, touch and hold an app shortcut icon. Drag your app shortcut icon to the right-most pane, and the shortcut is placed on a brand-new Home screen pane. To remove an app shortcut icon, drag it to the Remove icon.

**Drag an app shortcut icon to the Remove icon to delete it from the Home screen pane**



**Drag an app shortcut icon to the right-most pane to put it on a new Home screen pane**

## Use the Touchscreen

You interact with your Galaxy S7 mostly by touching the screen. You can tap, swipe, pinch, touch and hold, double-tap, and type.



- **Tap**—To start an application, tap its icon. Tap a menu item to select it. Tap the letters of the onscreen keyboard to type.



- **Touch and hold**—Touch and hold to interact with an object. For example, if you touch and hold a blank area of the Home screen, a menu pops up. If you touch and hold an icon, you can reposition it with your finger.



- **Drag**—Dragging always starts with a touch and hold. For example, if you touch the Notification bar, you can drag it down to read all of the notification messages.



- **Swipe or slide**—Swipe or slide the screen to scroll quickly. To swipe or slide, move your finger across the screen quickly. Be careful not to touch and hold before you swipe or you will reposition something. You can also swipe to clear notifications or close apps when viewing the recent apps.



- **Double-tap**—Double-tapping is like double-clicking a mouse on a desktop computer. Tap the screen twice in quick succession. For example, you can double-tap a web page to zoom in to part of that page.



- **Pinch**—To zoom in and out of images and pages, place your thumb and forefinger on the screen. Pinch them together to zoom out or spread them apart to zoom in (unpinching). Applications such as Browser, Gallery, and Maps support pinching.



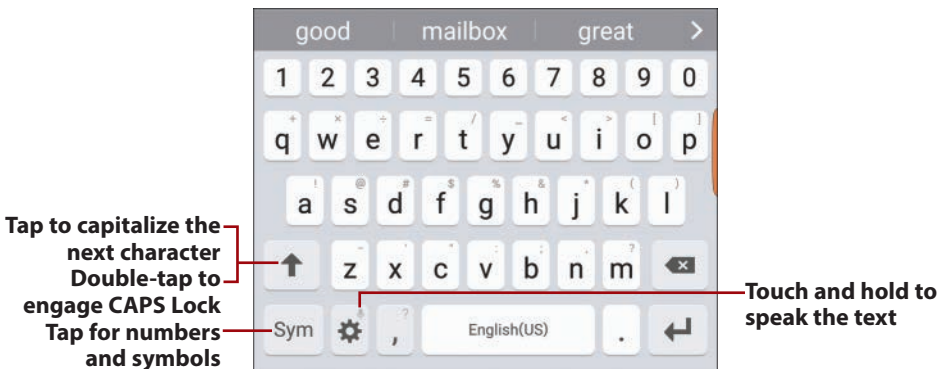
- **Rotate the screen**—If you rotate your Galaxy S7 from an upright position to being on its left or right side, the screen switches from portrait view to landscape view. Most applications honor the screen orientation. The Home screens and Launcher do not.

## Use the Keyboard

Your Galaxy S7 has a virtual or onscreen keyboard for those times when you need to enter text. You might be a little wary of a keyboard that has no physical keys, but you will be pleasantly surprised at how well it works.

Most applications automatically show the keyboard when you need to enter text. If the keyboard does not appear, tap the area where you want to type and the keyboard slides up, ready for use.

To make the next letter you type a capital letter, tap the Shift key. To make all letters capitals (or CAPS), double-tap the Shift key to engage CAPS Lock. Tap Shift again to disengage CAPS Lock.



As you type, your Galaxy S7 makes word suggestions. Think of this as similar to the spell checker you would see in a word processor. Your Galaxy S7 uses a dictionary of words to guess what you are typing. If the word you were going to type is the middle option in the list of suggestions, tap space or period to select it. If you can see the word in the list but it is not the middle word, tap the word to select it.

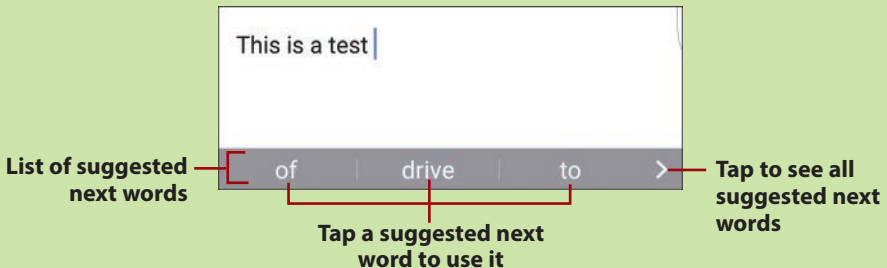




## >>> Go Further

### NEXT WORD SUGGESTION

When you are between typing words, the keyboard tries to predict the next word you want to type. (In this example I typed "This is a test"; the keyboard is suggesting that the most obvious word I want to type next is "drive," but it is also showing that I might want to type "of" or "to.") All you need to do is tap the correct word, and the keyboard types it for you. If the keyboard is not showing a word that you want to use, simply continue typing. The more you type, the more the keyboard learns how you write and the better it will become at suggesting the next words you are likely to type.

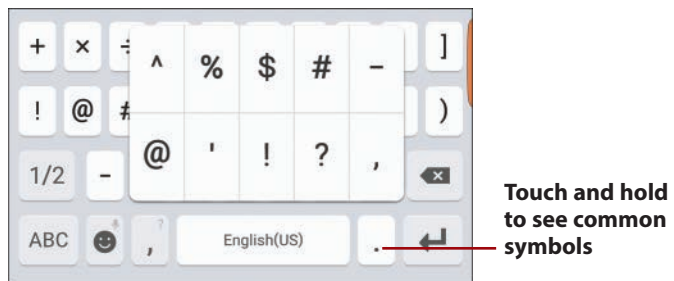


To type numbers or symbols, tap the Symbols key. When on the Numbers and Symbols screen, tap the Symbols key to see extra symbols. There are two screens of symbols. Tap the ABC key to return to the regular keyboard.

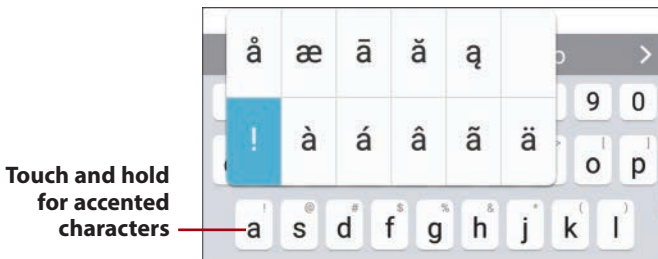


### Quick Access to Symbols

If you want to type commonly used symbols, touch and hold the period key. A small window opens with those common symbols. Tap a symbol to type it.



To enter an accented character, touch and hold any vowel or the C, N, or S key. A small window opens enabling you to select an accented or alternative character. Slide your finger over the accented character and lift your finger to type it.



To reveal other alternative characters, touch and hold any other letter, number, or symbol.

---

## Want a Larger Keyboard?

Turn your Galaxy S7 sideways to switch to a landscape keyboard. The landscape keyboard has larger keys and is easier to type on.

### Landscape keyboard



---

## Swipe to Type

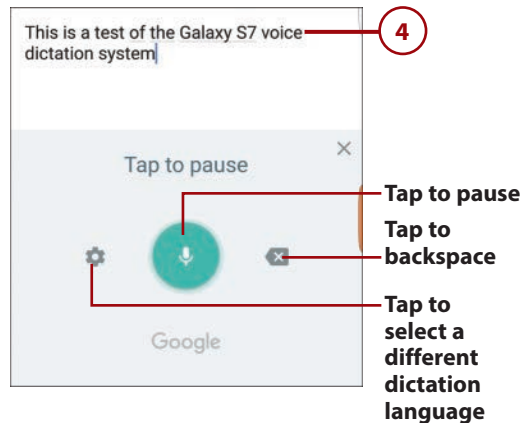
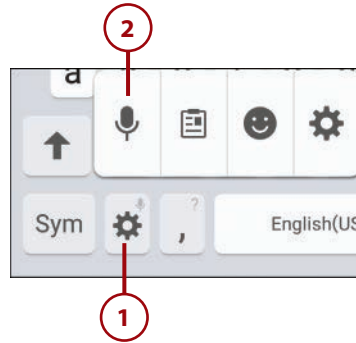
Instead of typing on the keyboard in the traditional way by tapping each letter individually, you can swipe over the letters in one continuous movement. This is called Continuous Input. It is enabled by default; to use it, just start swiping your finger over the letters of the word you want to type. Lift your finger after each word. No need to worry about spaces because your Galaxy S7 adds them for you. To type a double letter (as in the word pool), loop around that letter on the keyboard. As you swipe, a blue line trails your finger.



## Dictation—Speak Instead of Type

Your Galaxy S7 can turn your voice into text. It uses Google's speech recognition service, which means you must have a connection to the cellular network or a Wi-Fi network to use it.

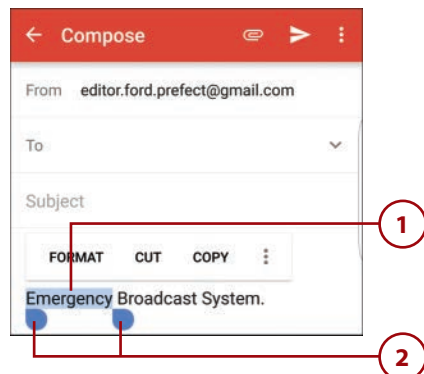
1. Touch and hold the Settings icon.
2. Tap the Microphone icon.
3. Wait until you see the green Microphone icon and start speaking what you want to be typed. You can speak the punctuation, for example "new line," "question mark," "exclamation mark," or "period."
4. Words that your S7 is not 100% sure of are underlined. If you see an underlined word that is not correct, tap it to change it.



## Edit Text

After you enter text, you can edit it by cutting, copying, or pasting the text. This task describes how to select and cut text so you can paste over a word with the cut text.

1. While you are typing, touch and hold a word you want to copy.
2. Slide the blue end markers until you have selected all of the text you want to copy.



### 3. Tap Copy.

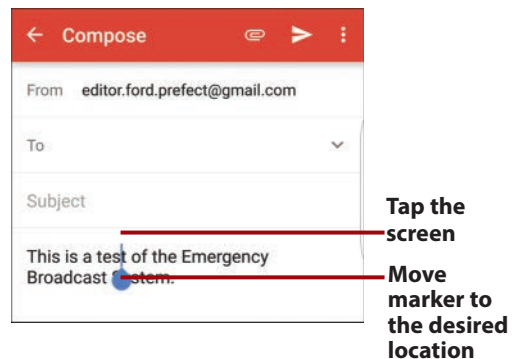
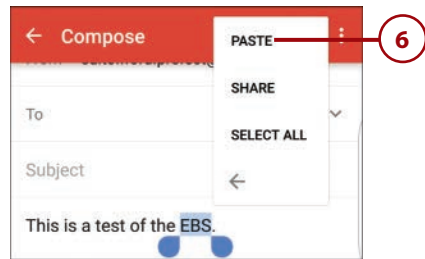
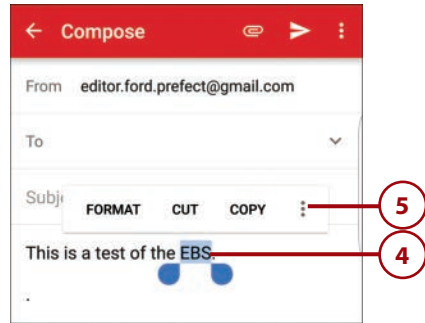
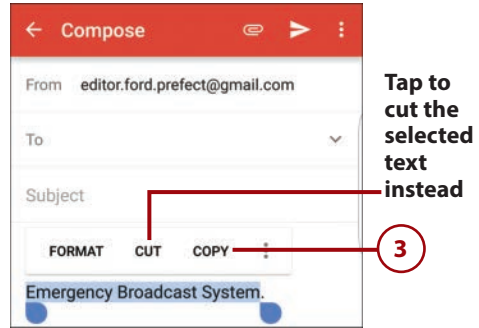
## Cutting Text

Cutting text places it in the Clipboard, just like a Copy action would do.

4. Touch and hold the word you want to paste over.
5. Tap the Menu icon.
6. Tap Paste to paste what you copied over the word you have selected.

## Placing a Cursor

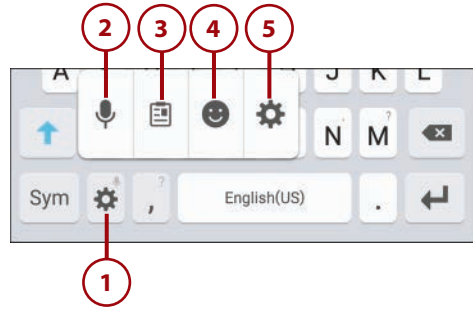
You can also simply place a cursor on the screen and move it around to do manual text editing, such as backspacing to delete letters or manually inserting a new word. To do this, tap the screen in the text area. A single blue marker displays; drag that marker to the point in the text where you want to make changes. Start typing or tap Backspace, and the action occurs at the cursor position.



## Keyboard Tricks

You can write instead of typing, use emoticons (smiley faces), and enable a one-handed keyboard.

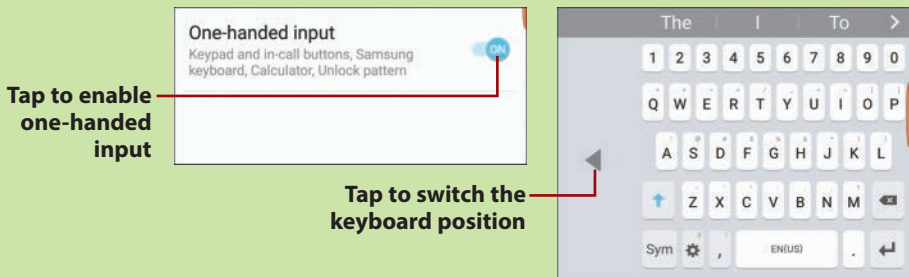
1. Touch and hold the settings key (to the right of the Sym key).
2. Tap to use dictation.
3. Tap to see everything you have previously copied to the Clipboard. If there is text, you can touch it to paste it at the cursor position.
4. Tap to type emoticons (smiley faces).
5. Tap to change keyboard settings, including choosing a new keyboard.



## >>>Go Further

### ONE-HANDED TYPING

If you would prefer to have the ability to type with one hand, you can choose the one-handed keyboard mode. This mode squashes the keyboard so that you can type with one thumb. To enable one-handed mode, open Settings, tap Advanced Features, and tap One-Handed Operation. Tap the on/off switch to the right of One-Handed Input to enable the one-handed input method (which includes the one-handed keyboard). While this is enabled, a shrunken keyboard appears on the bottom-right of the screen, which enables you to type with one thumb. Tap the arrow to switch the location between the bottom-right and bottom-left of the screen.

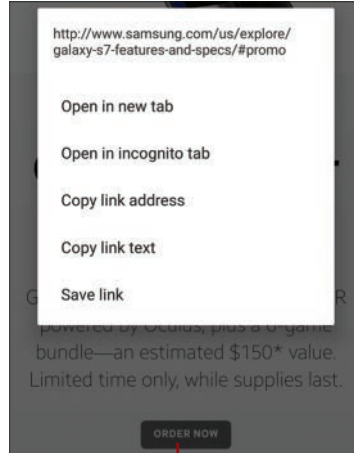
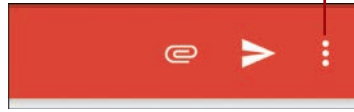


## Menus

Your Galaxy S7 has two types of menus: app menus and context menus. All applications use an app menu. To see the app menu, tap the Menu icon, which is normally on the top-right of the screen. As an alternative (but slower) method, you can touch and hold the Back button to see the app menu.

A context menu applies to an item on the screen. If you touch and hold something on the screen (in this example, a button that links to a new page), a context menu appears. The items on the context menu are based on the type of object you touched.

**Tap to see the app menu**



**Touch and hold a link or button to reveal the link context menu**

## >>> Go Further

### OLDER APPS AND THE MENU BUTTON

Some older Android apps that have not been updated to handle newer model Samsung devices may not display the regular Menu icon (three vertical dots) because they think that the Samsung phone has a physical Menu button. Because newer Samsung phones (including your Galaxy S7) no longer have a physical Menu button, if you suspect that the app you are using should have a Menu icon, touch and hold the Back button to trigger the app menu.

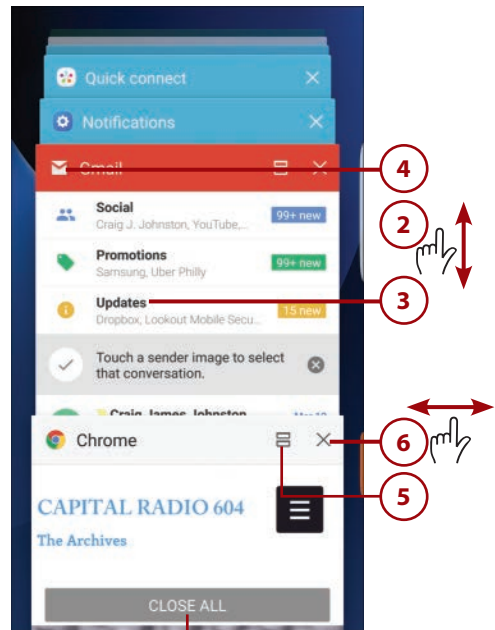


**Touch and hold for the app menu**

## Switch Between Apps

You can switch between running apps and close apps using the multi-tasking feature.

1. Tap the Recent Apps button (to the left of the Home button).
2. Scroll up and down the list of running apps.
3. Tap an app to switch to it.
4. Touch and hold an app icon to see memory and processor usage for each active app.
5. Tap to open the app in split-screen mode. This opens the app so that it only takes up the top half of the screen (not all apps support split-screen mode). See more about running multiple apps at the same time in the next section.
6. Swipe an app left or right off the screen to close it or tap the X on the top right of the app.



**Tap to end and close all apps**

## Run Multiple Apps on the Screen at the Same Time

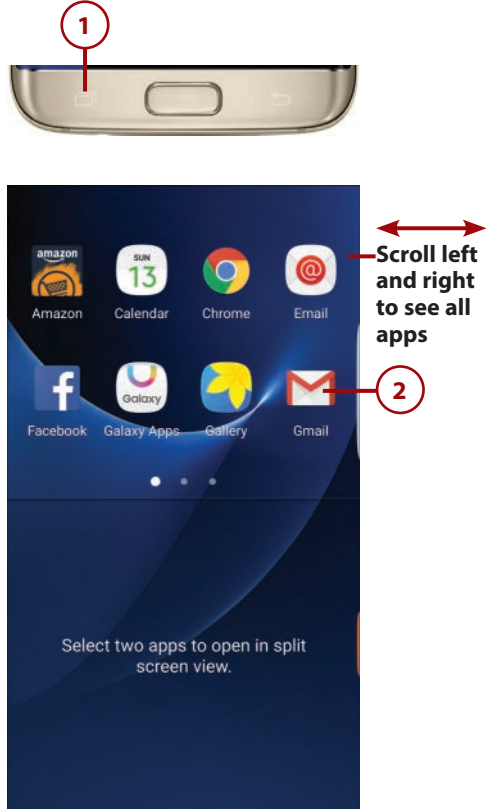
Your Galaxy S7 has a feature called Multi Window that allows certain apps to run on the same screen at the same time. They can either run in a split-screen configuration, in multiple separate small windows, or a combination of both.



## Two Apps Together on a Split-Screen

This section explains how to run two apps at the same time in a split-screen configuration.

1. Touch and hold the Recent Apps button while on the Home screen to see apps that support Multi Window.
2. Tap an app you want to run. The app launches in the top half of the screen.

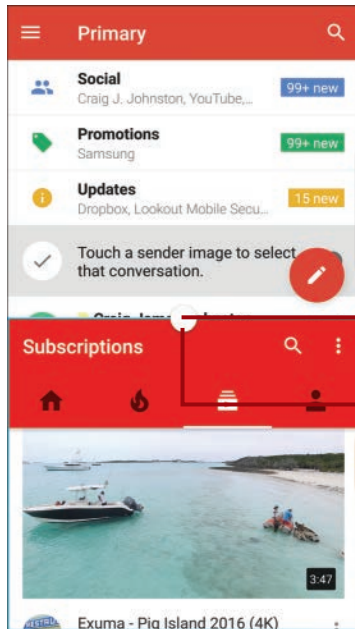
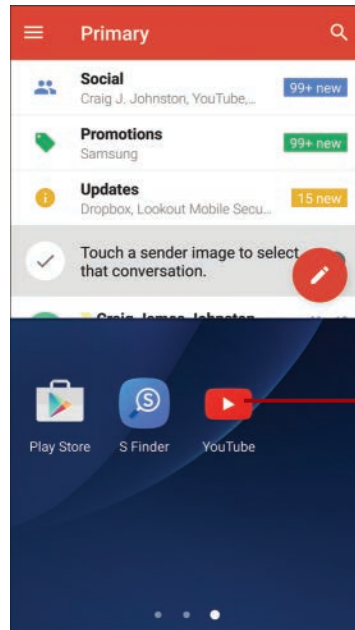


## *It's Not All Good*

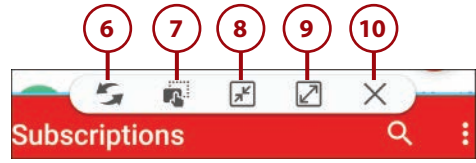
### **Not All Apps Support Multi Window**

Apps must be specially written to take advantage of Samsung's Multi Window mode because Multi Window mode is not part of the Android operating system. This means that you might not see the apps you are looking for until the developer updates the app to support Samsung's Multi Window mode.

3. Tap a second app icon to launch it in the bottom half of the screen.
4. Drag the circle up or down to give more or less room to each app.
5. Tap the circle to reveal extra Multi Window features.



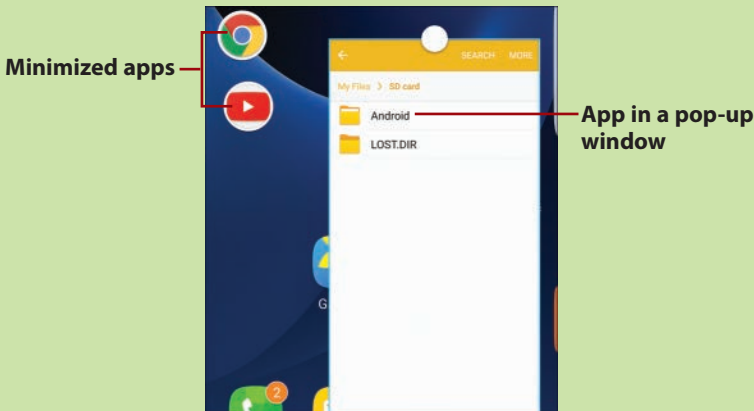
6. Tap to swap the position of the apps on the screen.
7. Tap to enable dragging content (such as text or an image) between windows.
8. Tap to minimize the selected app to a small draggable circle on the screen. A blue box indicates which is the selected app.
9. Tap to maximize the selected app to full screen. A blue box indicates which is the selected app.
10. Tap to close the app in the selected window. The selected app has a blue box around its perimeter.



## >>> Go Further

### MINIMIZED APPS

When you choose to minimize an app as shown in step 8, the app shrinks to a small circle on the screen. You can drag the minimized app anywhere on the screen. If you touch and hold the app, a trash can icon appears; drag the app to the trash can to close the app. If you tap the minimized app, it enlarges to a pop-up window instead of maximizing back to its original window in the split screen. You can then continue working on the app in its small window. When an app is in a pop-up window, you can resize it by dragging the blue border around the app. Minimized and pop-up apps continue to be shown no matter what screen you are on and what app you are running.

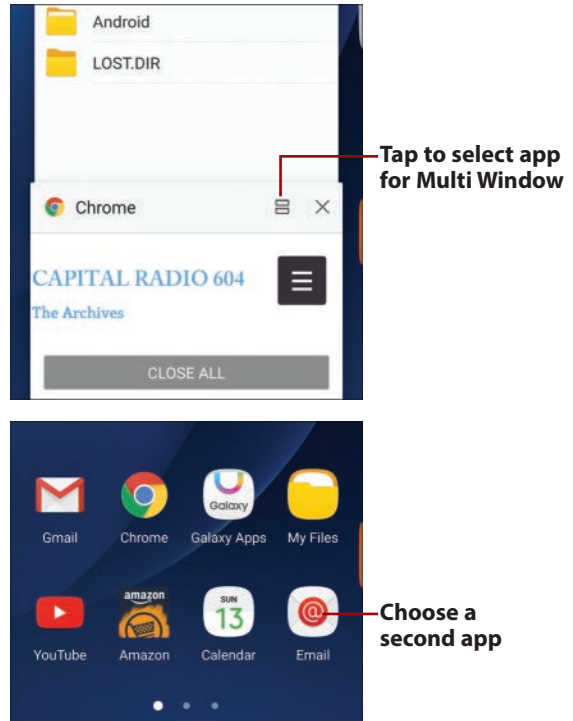


---

## Quicker Way of Running Multi Window

If you only want to use apps that are already running in Multi Window, you can do this more quickly. Tap the Recent Apps button. Tap the Multi Window icon on any running app. That app switches to Multi Window mode and displays in the top half of the screen. Next, tap a second app to run in the bottom half of the screen. Remember that not all apps support Multi Window so some apps may not have the Multi Window icon.

---



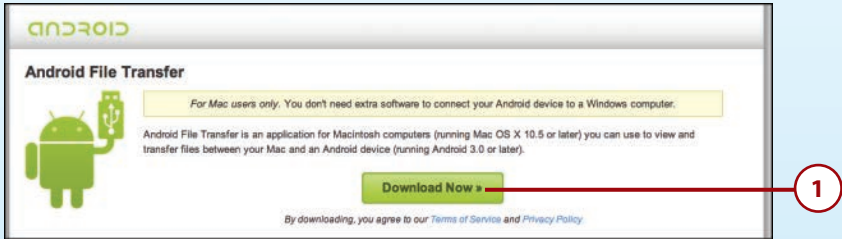
## Installing Synchronization Software

Because your Galaxy S7 is tightly integrated with Google and its services, all media that you purchase from the Google Play Store on your phone is stored in the Google cloud and accessible anywhere, anytime. However, you might have a lot of music on your computer and need to copy that to your Google cloud. To do that, you need to install the Google Music Manager software or the Android File Transfer app for your Mac to copy any files back and forth.

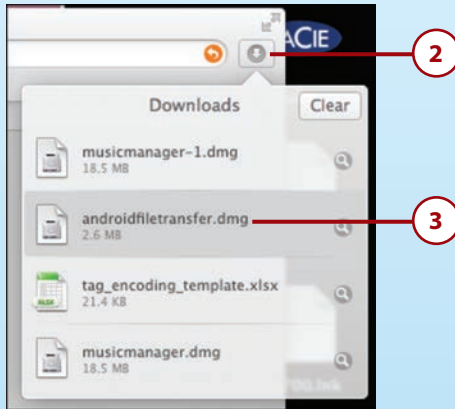
## Install Android File Transfer (Apple Mac OS X)

You only need the Android File Transfer app when using a Samsung Android phone (such as your Galaxy S7) on an Apple Mac running OS X.

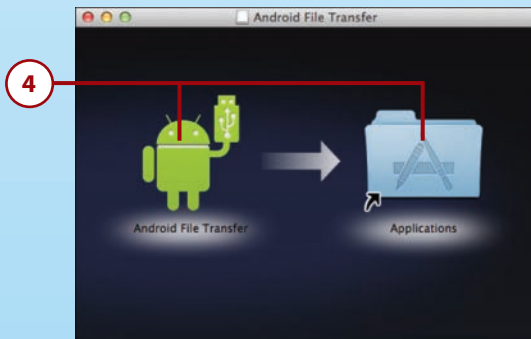
1. From your Mac, browse to <http://www.android.com/filetransfer/> and download the Android File Transfer app.



2. Click the Downloads icon.
3. Double-click the app in your Safari Downloads.



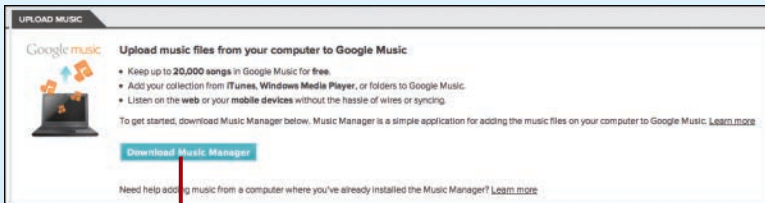
4. Drag the green Android to the Applications shortcut to install the app.



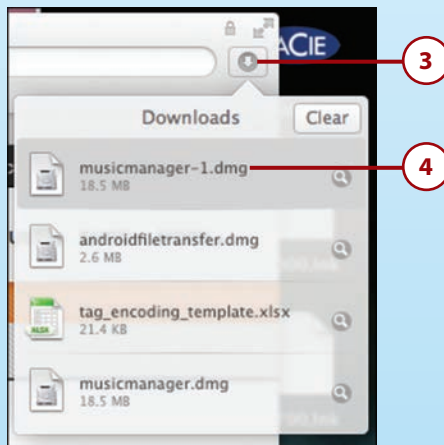
## Install Google Music Manager (Apple Mac)

Don't install Google Music Manager unless you plan to upload files from your computer to the Google cloud.

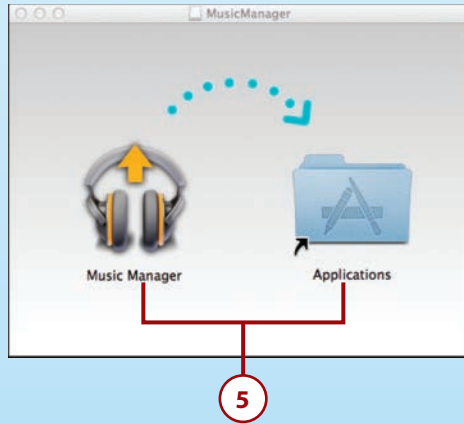
1. Visit [https://music.google.com/music/listen#manager\\_pl](https://music.google.com/music/listen#manager_pl) from your desktop web browser and log in to your Google account if you're prompted.
2. Click to download Music Manager.



3. Click the Downloads icon.
4. Double-click the app in your Safari Downloads.



5. Drag the Music Manager icon to the Applications shortcut to install the app.



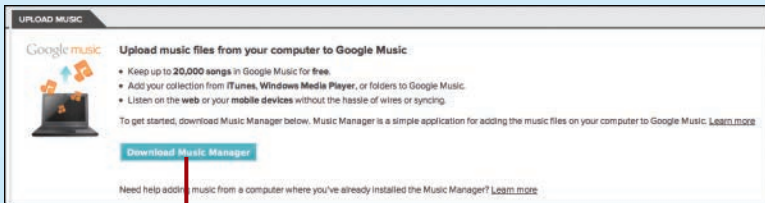
6. Double-click the Music Manager icon in the Applications folder.
7. Skip to the "Configure Music Manager" section to complete the installation.



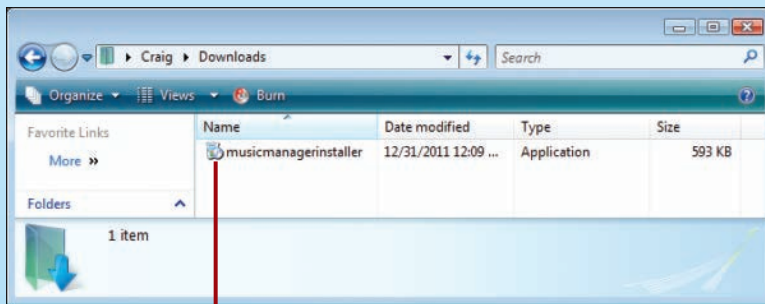
## Install Google Music Manager (Windows)

Don't install Google Music Manager unless you plan to upload files from your computer to the Google cloud.

1. Visit [https://music.google.com/music/listen#manager\\_pl](https://music.google.com/music/listen#manager_pl) from your desktop web browser and log in to your Google account if you're prompted.
2. Click to download Music Manager.



3. Double-click the app in your Downloads folder.

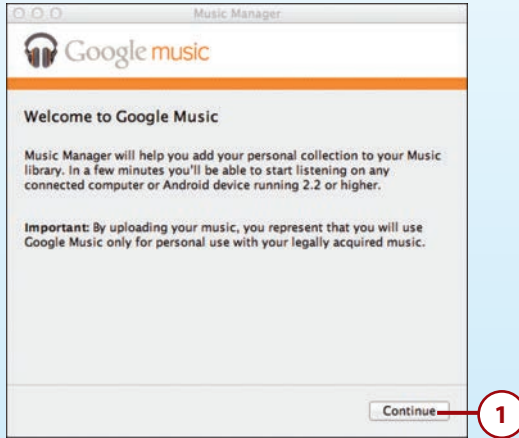


4. Skip to the "Configure Music Manager" section to complete the installation.

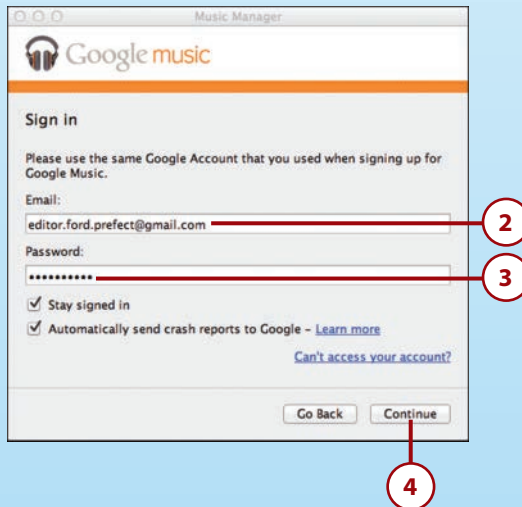


## Configure Music Manager (Windows and Apple Mac)

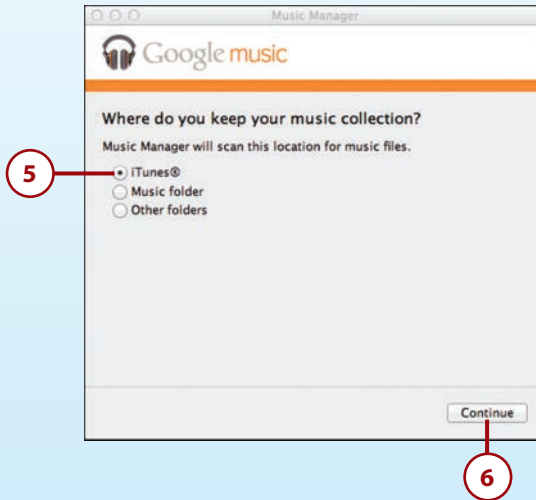
1. Click Continue.



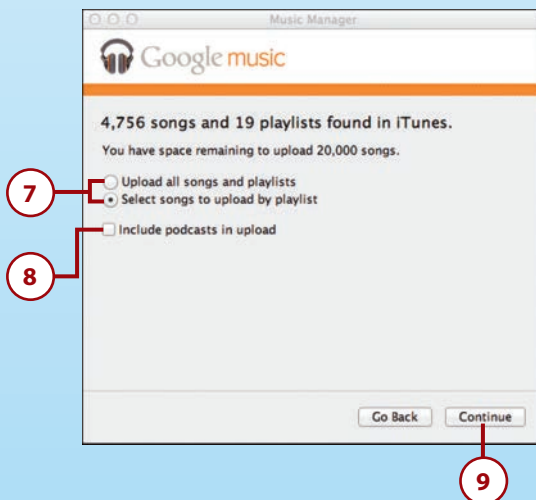
2. Enter your Google (Gmail) email address.
3. Enter your Google (Gmail) password.
4. Click Continue.



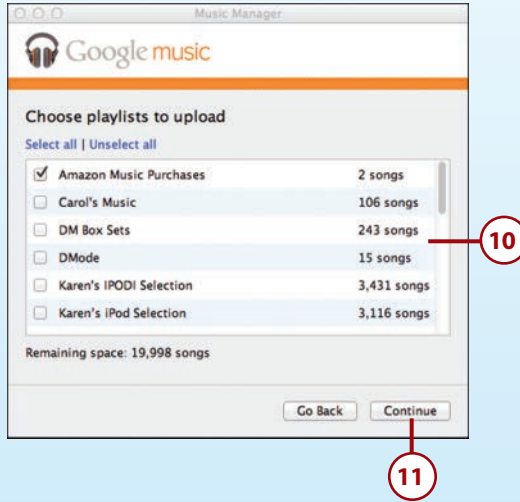
5. Choose where you keep your music.
6. Click Continue.



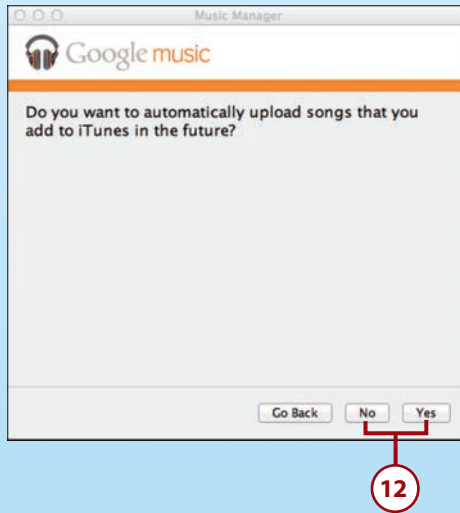
7. Choose whether to upload all of your music or just some of your playlists. Remember that you can only upload 20,000 songs for free. Skip to step 12 if you chose to upload all music.
8. Check if you also want to upload podcasts.
9. Click Continue.



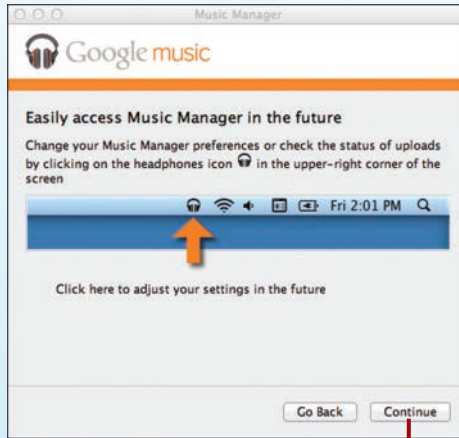
10. Select one or more playlists of music.
11. Click Continue.



12. Choose whether you want to automatically upload any new music that is added to your computer.

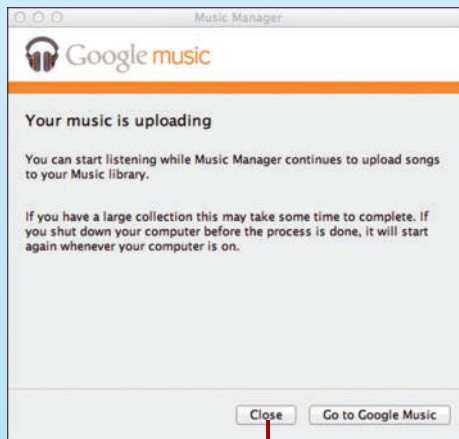


13. Click Continue.



13

14. Click Close.



14

Tap to choose a new wallpaper

Tap to choose where to use the wallpaper



Home screen ▾

59°  
Hightstown  
Updated 3/18 1:27 PM

Game Launcher

Agent

Inbox

Content

Samsung Pay

WorkSimple

Google

Email

Camera

Play Store

Google

Phone

Messages

Internet

Apps

Wallpaper motion effect

OFF

Asteroids  
3D

SET AS WALLPAPER

In this chapter, you find out how to make and take phone calls (including conference calls) using your Galaxy S7. Topics include the following:

---

- Getting to know the Phone app
- Receiving phone calls
- Making phone calls
- Configuring the Phone app

# 2

## Making and Receiving Calls

As a cellular phone, your Galaxy S7 includes powerful features that enable you to make phone calls swiftly and easily.

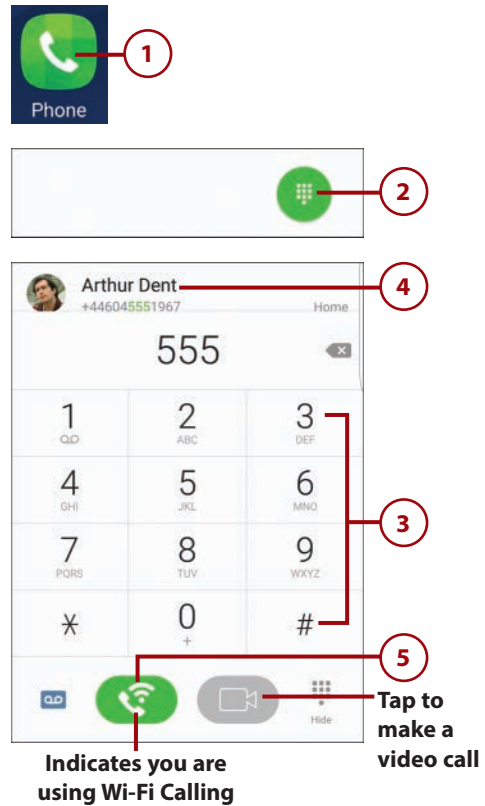
### Getting to Know the Phone App

With the Phone app, you can quickly make and receive calls across the cellular network. This section introduces you to some of the features you might frequently use.

## Open and Navigate the Phone App

The Phone app contains three tabs that enable you to make calls in various ways and to track the calls you receive.

1. On the Home screen, tap Phone.
2. Tap the dialpad icon to display the dialpad. The dialpad icon is always visible on the bottom right of the screen while you are in the Phone app.
3. Tap the keys to dial a number.
4. If the Phone app displays a suggested contact with a matching number, you can tap the contact if it is the one you want.
5. Tap the green phone icon to place the call.



## What Is Wi-Fi Calling?

The technical name for Wi-Fi Calling is Universal Media Access (UMA). This technology is provided by some carriers around the world and enables your Galaxy S7 to roam between the cellular network and Wi-Fi networks. Typically when you are connected to a Wi-Fi network, any calls you make are free and of higher audio quality because of the faster speeds. As you move out of Wi-Fi coverage, your S7 hands the call off to the cellular network—and vice versa—allowing your call to continue without interruption. The Phone app indicates when you are using Wi-Fi Calling by placing a Wi-Fi symbol next to the phone icon. If you want to read more about UMA or Wi-Fi Calling, read this online article: <http://crackberry.com/saving-call-charges-recession-your-blackberry>. The article is on a BlackBerry blog, but the descriptions of the technology still apply.

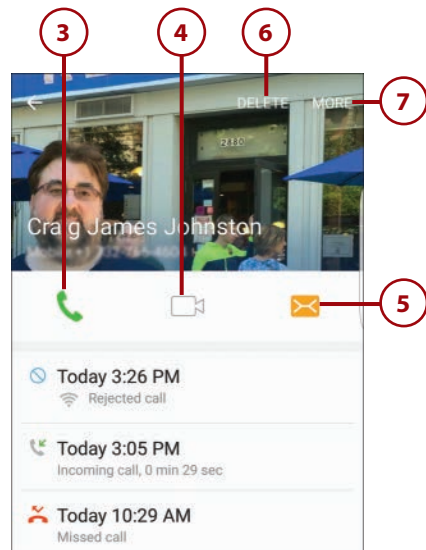
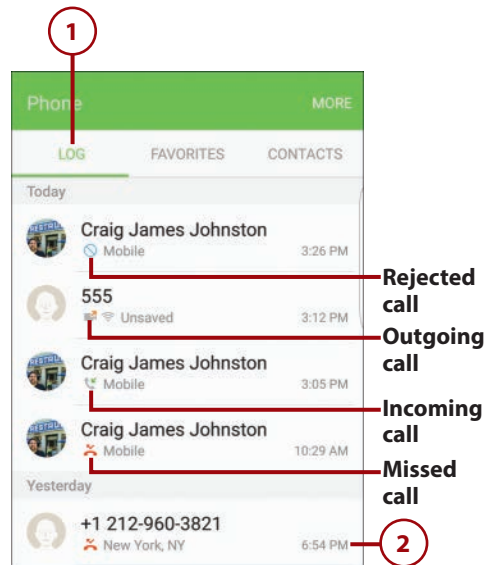
## What Is Video Calling?

Your Galaxy S7 allows you to make video calls to friends that also own a Samsung device that supports video calling. Not all Samsung devices support video calling. Your cellular provider must also allow the video calling feature for this to work.

## Call Log

The Log tab shows all activity in the Phone app, including incoming calls, missed calls, and placed calls.

1. Tap Log to see a list of the calls you have missed, placed, and received.
2. Tap a log entry to see more information about the caller.
3. Tap the phone icon to place a call to the caller.
4. Tap the video camera icon to place a video call to the caller.
5. Tap the envelope icon to send an SMS (text message) to the caller.
6. Tap Edit to delete one or more call log entries for this caller.
7. Tap More to view the full contact record for this caller, or add the caller to your Auto Reject List.

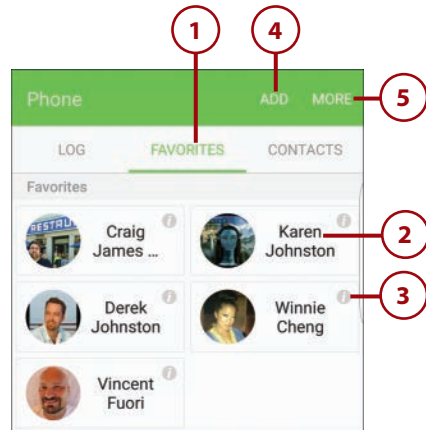




## Favorites

The Favorites tab shows contacts whom you have marked as favorite and contacts whom you call often.

1. Tap Favorites to see your favorite and frequently called contacts.
2. Tap the contact to place a call to them.
3. Tap the information icon to the right of a favorite contact's name to see all of the information about the contact.
4. Tap Add to add additional favorite contacts from your Contacts list.
5. Tap More to remove favorite contacts, or to reorder their positions on the Favorites tab.



## Contacts

The Contacts tab shows all of the contacts that you have added to the Contacts app.

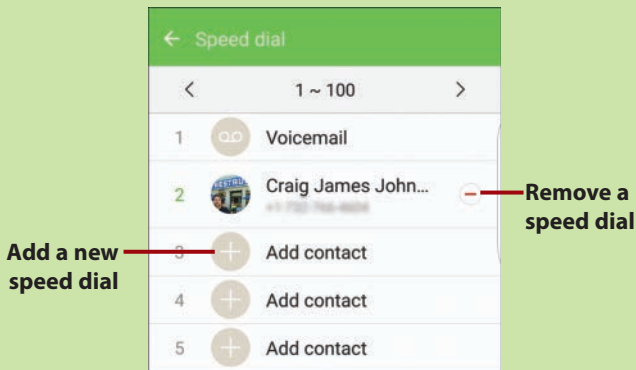
1. Tap Contacts to see all of your contacts.
2. Tap a contact to see all information about that contact.
3. Tap to search for a contact.
4. Tap Create to add a new contact.
5. Tap More to remove contacts or see your Speed Dial screen.



## >>>Go Further

### SPEED DIAL

Speed dialing is a bit of a holdover from the 1980s and '90s when phones weren't as sophisticated as they are today. However, you might still find it useful to touch and hold one key to call a number. To add or edit your Speed Dial numbers, tap the Menu icon and tap Speed Dial. (Voicemail is already assigned to speed dial 1.) Tap the plus symbol for a numbered entry to add a contact for that Speed Dial number. To use Speed Dial, while the keypad is visible, touch and hold a number associated with a Speed Dial contact. That number will be dialed.

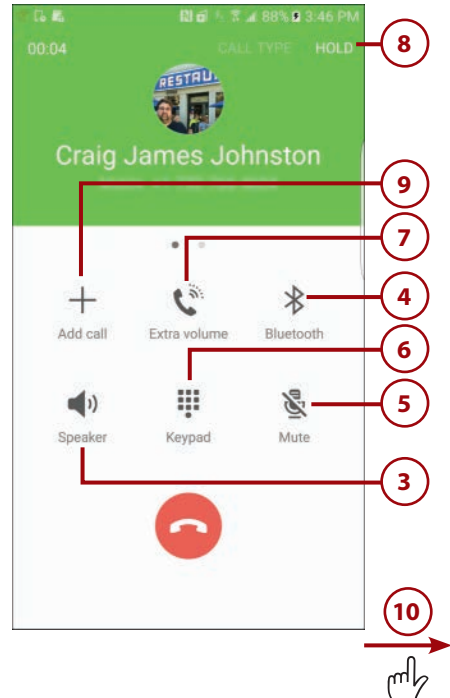
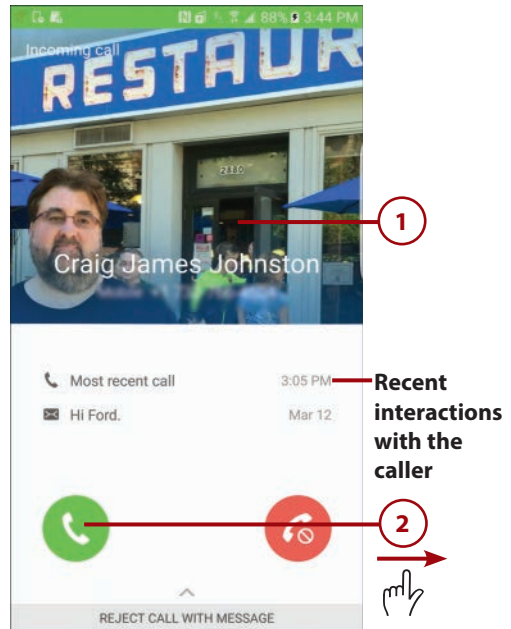


## Receiving a Call

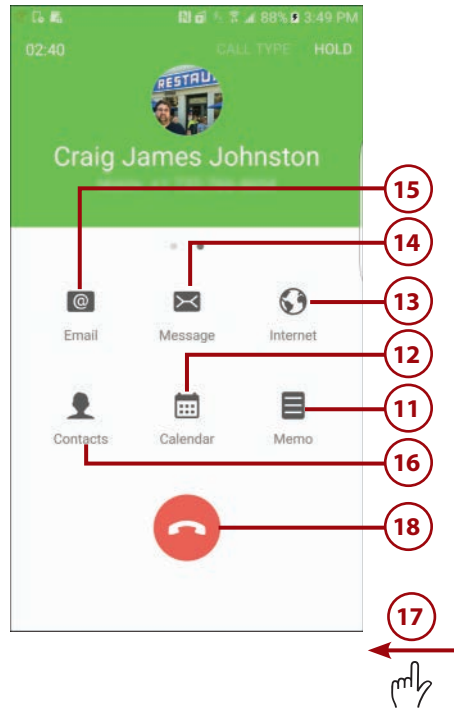
When someone phones your Galaxy S7, you can accept the call, reject it, or reject it and send a text message.

## Accept a Call

1. When the phone rings, look at the contact name (if it is available) or the phone number (if the contact name is not available) and decide whether to take the call.
2. Swipe the green phone icon to the right to accept the call.
3. Tap to switch the call audio to the speaker.
4. Tap to switch the call audio to a Bluetooth device you have previously paired, such as a headset, your smartwatch, or your vehicle's built-in Bluetooth.
5. Tap to mute the call. Tap again to turn off muting.
6. Tap to show the keypad if you need to type extra numbers after the call is connected.
7. Tap to boost the call volume if the caller speaks softly.
8. Tap to put the call on hold.
9. Tap to create a conference call. See the "Make Conference Calls" task later in this chapter for more information.
10. Swipe to the right to see more options, such as the ability to write a memo that is associated with the caller.



11. Tap to write a memo that is associated with the caller while you're on the call.
12. Tap to open the Calendar app, view the calendar, and create a new appointment if needed.
13. Tap to open the Internet browser and use it while on the call.
14. Tap to send an SMS (text message) to the caller.
15. Tap to send an email to the caller.
16. Tap to show the caller's information in the Contacts app.
17. Swipe to the left to return to the main call screen.
18. Tap to end the call.

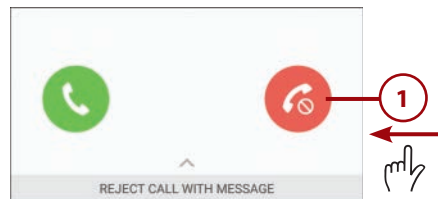


## Reject a Call

If you do not want to accept the call, you can reject it so that it goes to your voicemail.

1. When the phone rings, swipe the red phone icon to the left to reject the call.

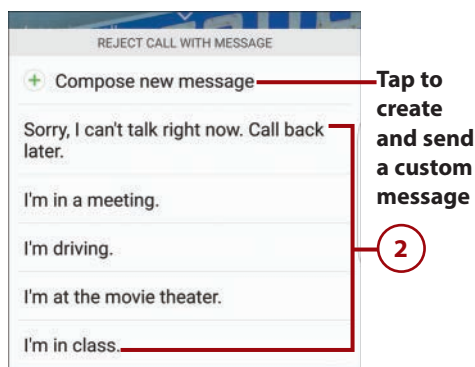
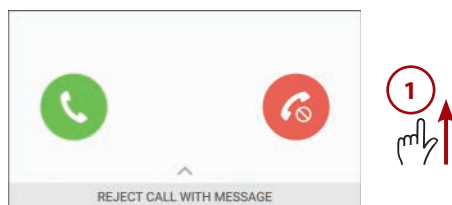
The call goes to voicemail, and your Galaxy S7 displays the screen you were using before the call came in.



## Reject a Call and Send a Text Message

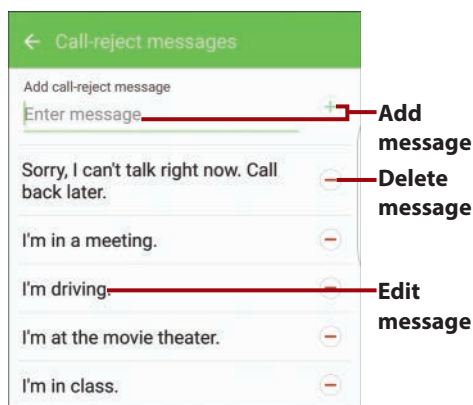
Instead of simply declining a call and sending it to your voicemail, you can send an SMS (text message) straight back to the caller. Your Galaxy S7 provides a selection of canned messages for general needs. You can also create your own messages or type custom messages for particular calls.

1. When the phone rings, swipe up to display the Reject Call with Message shade.
2. Tap to send one of the canned messages.



## Creating Your Own Reject Messages

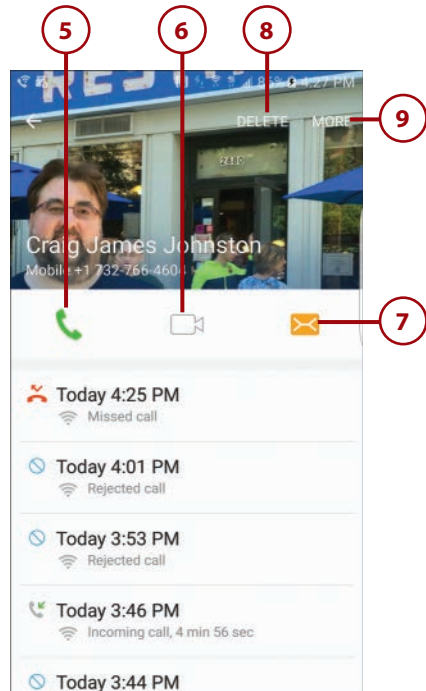
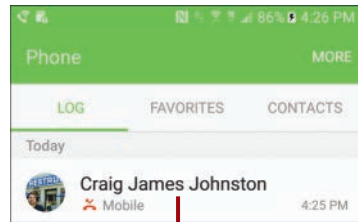
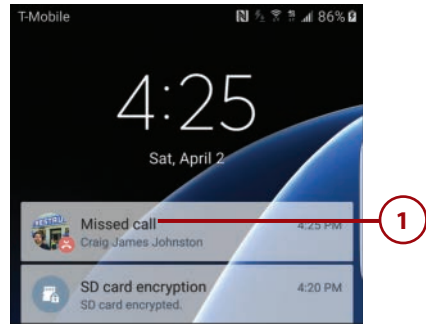
To create and save your own reject messages, open the Phone app and tap More. On the More menu, tap Settings, Call Blocking, Call-Reject Messages. On the Call-Reject Messages screen, type a new rejection message and tap the plus symbol to create a new rejection message, or tap an existing message to open it for editing. Tap the red minus symbol to delete a rejection message.



## Handle Missed Calls

If you miss a phone call, you can quickly locate it in the Phone app's logs so that you can return it, but you can also take actions on missed calls from the Lock screen or any other screen.

1. Tap to see the missed call from the Lock screen. If you use a Lock screen password or other method of locking your S7, you are required to use that method to unlock your S7 before you can continue.
2. Swipe from left to right across the missed call log entry to call the number back.
3. Swipe from right to left across the missed call log entry to send an SMS (text message) to the caller.
4. Tap the missed call log entry to see its details.
5. Tap to call the person back.
6. Tap to place a video call to the person.
7. Tap to send an SMS (text message) to the caller.
8. Tap to delete one or more call log entries from this caller.
9. Tap to view the caller's full contact information (if you already have the person in your Contacts), or add the number to your Auto Reject list. When someone's number is on the Auto Reject list, your S7 automatically rejects calls from that number.



## Making Calls

Aside from making a call the traditional way—by using the dialpad to punch in the numbers—you can voice dial a call on your Galaxy S7, or you can make a conference call.

---

### Starting a Call from the Contacts App

Instead of launching the Phone app and then tapping the Contacts tab to go to the Contacts app, you can start a call directly from the Contacts app. Tap Contacts on the Home screen or the Apps screen to launch the Contacts app, tap the contact to display his or her details, and then tap the green phone icon to the right of the number you want to call.

---

### Dial Using Your Voice

Using Google Now, your Galaxy S7 enables you to dial calls using your voice.

1. Say “OK Google.” A white box appears on the screen indicating that Google Now is listening for a command.
2. Say “Call,” followed by the contact’s name; if the contact has multiple phone numbers, say the type of number as well. For example, say “Call Dana Smith mobile” or “Call Craig at Home.”
3. Wait while your S7 dials the number. The Dialing screen appears.



---

### Using S Voice Instead of Google Now

By default, Google Now acts as your voice assistance on your Galaxy S7. You wake up Google Now by saying “OK Google.” If you would prefer to use Samsung’s S Voice, open the S Voice app. It walks you through creating your S Voice Wake Up command. It can be anything, for example “Hi Galaxy.” After you have set up S Voice, you can say “Hi Galaxy” and a command.

---

## Using Other Apps During a Call

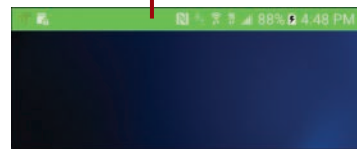
During a call, you can use most other apps freely, but you cannot play music or video. You can take photos with the Camera app, but you cannot shoot videos. To switch to another app, either use the Recent Apps list or press the Home button and use the Apps screen as usual. While you are using another app, your Galaxy S7 displays a green bar at the top of the screen to remind you that you are in a call. Pull down the Notification panel to control the call or return to it or take actions such as switch to speakerphone, mute, and hang up.

## Make Conference Calls

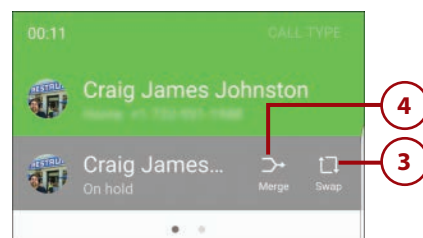
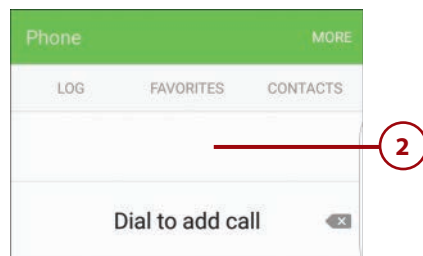
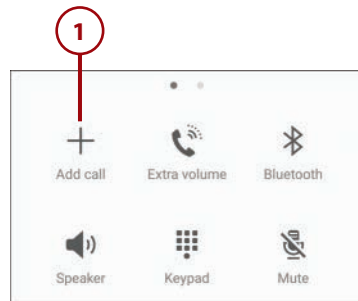
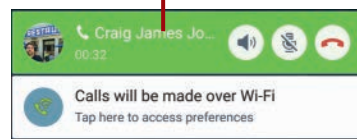
You can quickly turn your current call into a conference call by adding other participants.

1. With a call in progress, tap Add Call on the call screen.
2. Dial the call in the most convenient way. For example, either type out the phone number or dial from the call log, Favorites, or Contacts.
3. Tap to swap between the original call and the one you just added, if you need to.
4. Tap Merge to merge the calls and complete the conference call setup.

Green bar indicates call is in progress.

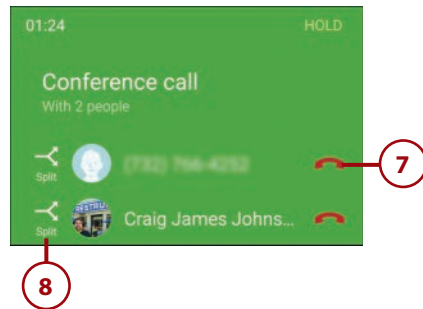
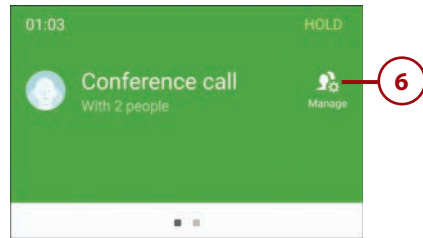


Tap to return to your call.





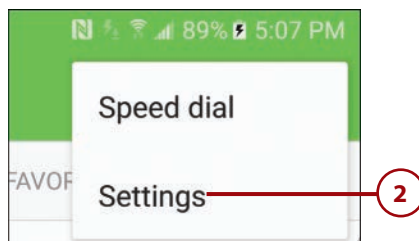
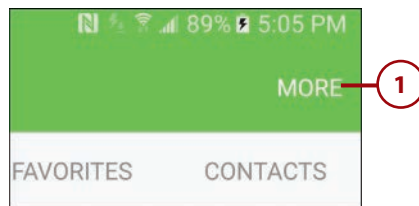
5. Repeat steps 1–4 to add additional callers. The exact number of callers you can have on a conference call is governed by your wireless carrier.
6. Tap Manage if you need to hang up on only one of the conference call parties, or if you need to split one of the parties off the conference call while still keeping them connected and on hold. On some versions of the Galaxy S7, the Manage menu is missing, preventing you from performing steps 6, 7, and 8.
7. Tap the red phone icon to the right of a conference party you want to hang up on and remove from the conference call.
8. Tap Split if you want to remove the party from the conference call, but need to keep them connected to your phone and on hold.



## Configuring the Phone App

To make the Phone app work your way, you can configure its settings.

1. Tap More.
2. Tap Settings.



3. Tap to enable or disable the feature that allows you to swipe over a call log entry to either place a call to that number or send a text message to it.
4. Tap to enable or disable the feature that makes the Phone app show only contacts who have phone numbers, and hide contacts that have no phone numbers.
5. Tap to choose certain numbers for which calls will be automatically rejected. Tapping here also lets you edit your canned call rejection messages.

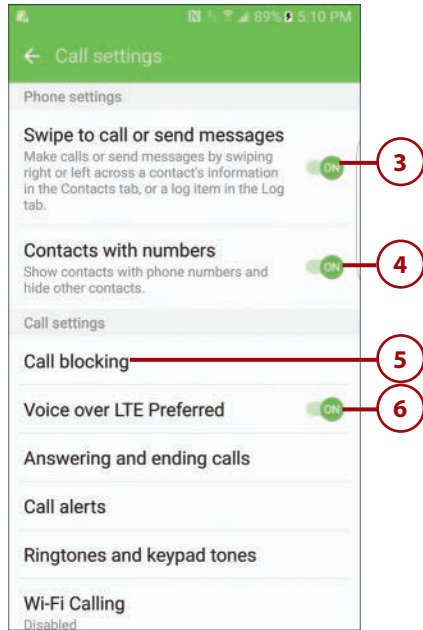
---

### What Does Call Rejection Do?

Your Galaxy S7's call rejection feature allows you to specify certain numbers to automatically reject, or to reject incoming calls that have no number or show as Unknown. Automatically rejecting specific numbers enables you to avoid calls from people you do not want to talk to.

---

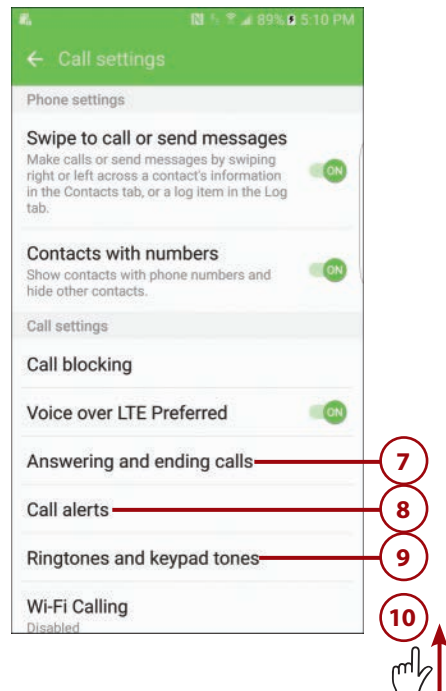
6. Tap to choose whether you want to use Voice over LTE (VoLTE) when it is available.



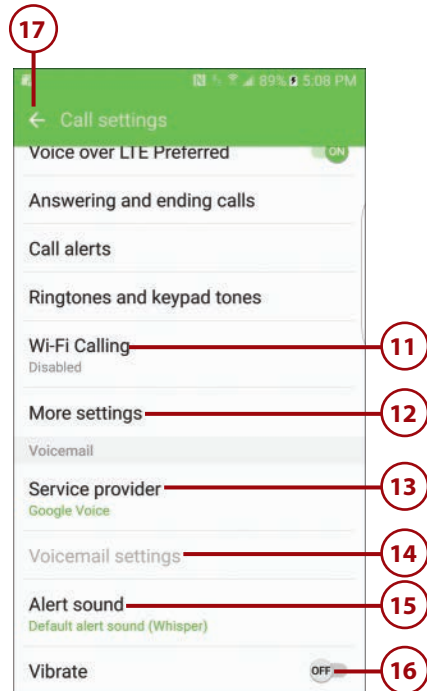
## What Is VoLTE?

LTE (or Long-Term Evolution) is the fourth generation of cellular data technology (not to be confused with the slightly faster version of 3G technology that has been incorrectly called 4G for years). VoLTE stands for Voice over LTE. Effectively, your voice call is sent as regular data over the LTE data channel as opposed to over the cellular voice channel. Voice quality is much better due to the higher rate at which the data is transmitted and received, and if the person you are calling also uses VoLTE, you can speak at the same time. Most wireless carriers treat VoLTE as regular voice minutes and don't let it count against your data plan. However, you should verify the situation with your local wireless carrier; otherwise, your data plan might take an unexpected hit.

7. Tap to choose how you want to answer and end calls. You can choose to allow pressing the Home or Power buttons to answer an incoming call. You can also automatically answer an incoming call if you have your S7 connected to a Bluetooth device or your vehicle's built-in Bluetooth.
8. Tap to choose options for vibrations, cell status tones, and alerts during calls. You can choose whether your Galaxy S7 vibrates or plays a tone when someone answers your call and when they hang up. You can also choose to receive or suppress notifications during calls.
9. Tap to choose the ringtone that plays when you receive an incoming call. You can also choose whether you want your phone to vibrate when you receive an incoming call, and what vibration pattern to use.
10. Swipe up for more settings.

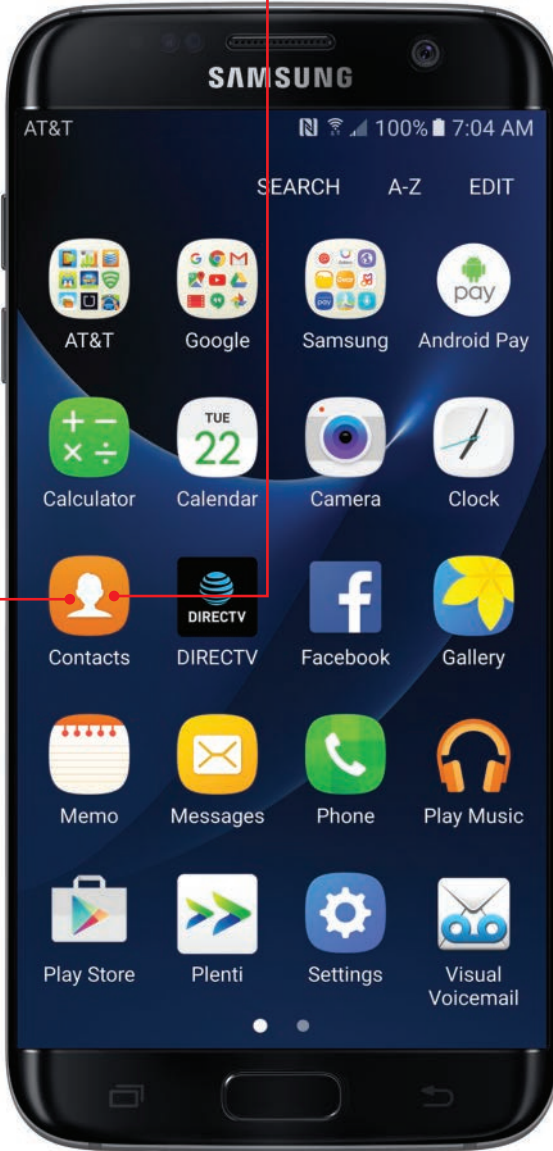


11. Tap to enable or disable Wi-Fi Calling, and choose how you want your S7 to utilize Wi-Fi Calling. You can choose to have your S7 prefer Wi-Fi but use cellular if Wi-Fi is unstable; prefer the cellular network, and only use Wi-Fi if cellular service is unavailable; or only use Wi-Fi for all calls.
12. Tap to see additional settings, including how to handle Caller ID, call forwarding, call waiting, and Fixed Dialing Numbers (FDN). When you tap, the settings are loaded over the wireless network, so you might need to wait a few seconds before they appear.
13. Tap to choose which voicemail service to use (if you have more than one option). If you use Google Voice, it is common to use the Google Voice voicemail system as opposed to the one provided by your wireless carrier.
14. Tap to adjust voicemail settings (if options are available).
15. Tap to choose your ringtone for announcing voicemail.
16. Tap to choose to also vibrate when you are notified of a new voicemail.
17. Tap to save your changes and return to the main phone screen.



Store, manage, and use all your contacts

Search for contacts on your Galaxy S7



# Index

## A

- accented characters (text), typing on keyboard, 27
- accessibility settings
  - accessing, 57
  - answering/ending calls, 65
  - dexterity/interaction, 62-63
  - Direct Access menu, 64
  - hearing, 61
  - importing, 65
  - managing, 65
  - notification reminders, 64
  - vision, 59-61
  - voice, 58-59
- accessories
  - Android Wear smartwatches
    - Airplane mode*, 391
    - alarms*, 395
    - alarms/notifications*, 380
    - alerts/notifications*, 384, 388, 397
    - battery life*, 384-385
    - Bluetooth connections*, 377
    - Bluetooth devices*, 390
    - brightness*, 389
    - choosing watch faces*, 382
    - configuring*, 376-378, 383-384
    - contacts and text recognition*, 394
    - customizing*, 390-391
    - disconnecting S7 from*, 384
    - email*, 394-396
    - examples of*, 378
    - features of*, 387
    - gestures/motions*, 391
    - Google Maps Micro app*, 379
    - gray icons*, 380
    - health/fitness*, 380-381, 392-393
    - installing apps*, 380-381, 386-387
    - language selection*, 376
    - locking*, 391
    - memory usage*, 385
    - navigating*, 379, 388, 395
    - playing music*, 396-398
    - reminders*, 393
    - resetting*, 391
    - stopwatch*, 380, 393
    - synchronizing apps with S7*, 385
    - taking notes*, 381, 393
    - texting*, 394
    - Theater mode*, 389
    - timers*, 395
    - Together feature*, 384, 399
    - updating*, 391
    - voice actions*, 379-381, 384, 392-396
  - Bluetooth devices, 355-356
    - cases, 356
    - finding, 354
  - ActiveSync server, 184
  - activity trackers (S Health)
    - adding/removing, 404
    - sleep, 412-414
    - step goals, 408-412
  - Adaptive Display feature, 75
  - Agenda window (Calendar app), 132

- Airplane mode (Android Wear smartwatches), 391
- Album Only status (Google Play Music app), 230
- albums
  - Gallery, 262, 289
  - Image Viewer, 259
- alerts/notifications, 22
  - advanced settings, 68-69
  - Android Wear smartwatches, 380, 384, 388, 395-397
  - customizing, 66-69
  - Lock screen, 16, 19
  - Notification bar (Home screen), 20
  - reminders, customizing, 64
  - Smart Alert gesture/motion, 7
  - Swipe Up gesture/motion, 68-69
  - tasks (Calendar app), 145
- alternative characters (text), typing on keyboard, 27
- Always On Display feature, 74
- Android Device Manager, 99. *See also* Find My Mobile service
- Android File Transfer (Apple Mac), 38, 317
- Android Wear smartwatches
  - Airplane mode, 391
  - alerts/notifications, 380, 384, 388, 395-397
  - apps
    - installing*, 380, 381, 386-387
    - synchronizing with S7*, 385
  - battery life, 384-385
  - Bluetooth connections, 377, 390
  - brightness, 389
  - configuring, 376-378, 383-384
  - contacts and text recognition, 394
  - customizing, 390-391
  - disconnecting S7 from, 384
  - email, 394-396
  - examples of, 378
  - features of, 387
  - gestures/motions, 391
  - Google Maps Micro app, 379
  - gray icons, 380
  - health/fitness, 380-381, 392-393
  - languages, choosing, 376
  - locking, 391
  - memory usage, 385
  - navigating, 379, 388, 395
  - notes, taking, 381
  - playing music, 396-398
  - reminders, 393
  - resetting, 391
  - stopwatch, 380, 393
  - taking notes, 393
  - texting, 394
  - Theater mode, 389
  - timers, 395
  - Together feature, 384, 399
  - updating, 391
  - voice actions, 379-381, 384, 392-396
  - watch faces, choosing, 382
- answering calls, 65
  - from Lock screen, 20
  - ringtones, 66
  - vibration, 66
- Apple Mac
  - Android File Transfer, 38, 317
  - Google Music Manager
    - configuring*, 42-45
    - installing*, 39-40
  - iTunes backups, 318
- apps (applications), 53. *See also* widgets
  - Android Wear smartwatches
    - installing apps*, 380-381, 386-387
    - synchronizing apps with S7*, 385
  - app menu, viewing, 32
  - closing, 33
  - folders
    - App Folders (Home screen)*, 20, 23
    - creating*, 23
  - force-stopping, 367
  - free apps
    - Galaxy Apps Store*, 336-337
    - Google Play Store*, 328
  - Home button/fingerprint reader, 5, 14, 97
  - in-app purchases, 330
  - installing
    - Galaxy Apps Store*, 336-339
    - Google Play Store*, 328-339
    - MDM*, 335
  - landscape orientation, 369
  - launching, 21
  - managing, 332
  - minimizing, 36
  - multiple apps, running, 34-37
  - Multi Window mode, 34, 37
  - navigating, 5
  - permissions, 330-331
  - Pop-up View gesture/motion, 8
  - purchasing
    - Galaxy Apps Store*, 337-338
    - Google Play Store*, 329-330
  - Recent Apps button, 5, 33
  - re-installing, 334
  - running apps
    - multiple apps*, 34-37
    - viewing*, 33
  - shortcuts
    - App Shortcut (Home screen)*, 20-24
    - creating*, 22
    - removing*, 24
  - split screen mode, 33-35
  - switching between apps, 33

- uninstalling, 333
- updating, 332
- vibration, 67
- archiving email in Gmail, 177
- Article mode (Play Newstand app), 351
- aspect ratio (Camera app), 246
- attachments
  - email
    - Email app*, 191, 195
    - Gmail*, 173-176
    - Insert from Drive links*, 173-174
    - inserting versus attaching*, 173
    - sending pictures/video via Camera app*, 266
    - sending pictures/video via Gallery*, 264-265
  - texts, 204-205
- audio
  - adjusting, 66-67, 70-71
  - Concert Hall feature, 71
  - Do Not Disturb feature, 71-72, 95
  - earpiece, 4
  - Equalizer settings, 70
  - headphone jack (3.5mm), 6
  - microphone, 6
  - muting, 8
  - speaker, 6
  - surround sound, 70
  - Tube Amp Pro feature, 70
  - UHQ Upscaler settings, 70
  - volume up/down buttons, 5
- Auto/Close Focus (Camera app), 249
- Automatic Restore option, 323

## B

---

- Back button, 5
- backups
  - Automatic Restore option, 323
  - contacts, backing up in Contacts app, 120
  - first-time setup, 13, 17
  - Google accounts, 322-323
  - iTunes, 318
  - iTunes backups, 318
  - manual backups, 323
  - Samsung Smart Switch, 317-321
- battery
  - Android Wear smartwatches, 384-385
  - life, extending, 358-359
    - battery does not charge*, 368
    - overheating*, 368
    - Power Saving Mode*, 363-364
    - screen brightness*, 360
    - Sleep mode*, 361
    - turning Bluetooth off*, 362
    - turning Wi-Fi off*, 361
    - Ultra Power Saving Mode*, 364-365
  - Power button, 5
  - Wallpaper Motion Effect, 48
- BCC (Blind Carbon Copy), email, 172
- BeyondPod podcast manager, 235
  - episodes, 237
    - deleting*, 238
    - descriptions*, 240
    - favorites*, 238
    - filtering*, 240
    - playing*, 238
    - sharing*, 238-240
    - sorting*, 240
    - video as audio*, 240
  - feeds
    - deleting*, 241
    - updating*, 240-241
- Bluetooth devices
  - Android Wear smartwatches, 377, 390
  - Google Maps, 222
  - pairing, 355-356
  - printers, 299-300
  - receiving calls, 106, 114
  - Quick Settings, 362
  - security, 356
  - turning on/off, 362
- bookmarks (websites)
  - Bookmarks list, 154
  - creating, 153-154
  - deleting, 154-155
  - editing, 154
  - History list, 155
  - synchronizing, 155
- books, Play Books app. *See also* magazines, newspapers
  - bookmarks, 346
  - customizing view, 346
  - downloading books, 343
  - flowing text, 347
  - jumping to pages, 345
  - navigating, 342
  - original pages, 347
  - purchasing books, 342, 343
  - reading
    - book reviews*, 343
    - books*, 344
    - free book samples*, 343
  - saving books, 348
  - searching
    - for books*, 343
    - in books*, 345
  - sharing books, 344
  - taking notes, 347
  - translating text, 347



Briefing view (Flipboard app), 21

brightness

adjusting, 73, 360

Android Wear smartwatches, 389

Camera app, 245, 249-251, 287-288

light sensor, 4

touchscreen, 360

browsing the web via Internet app, 148, 156

Burst mode (Camera app), 257

buttons

Back button, 5

Home button/fingerprint reader, 5, 14, 97

Menu button, 32

Power button, 5

Recent Apps button, 5, 33

volume buttons, 5, 256

buying

accessories, 354

apps

*Galaxy Apps Store, 337-338*

*Google Play Store, 329-330*

books, Play Books app, 342-343

magazines, Play Newsstand app, 349-350

movies, Play Movies & TV app, 273-275

music, Google Play Music, 226-231

newspapers, Play Newsstand app, 349-350

## C

Calendar app

Agenda window, 132

calls and, 107

customizing, 66

Day view, 137

events, 132-133

*private events, 135*

*reminders, 134-136*

*searching, 144*

managing calendars, 140

Month and Agenda view, 138-140

reminders, 134-136

tasks

*adding to calendar, 141-143*

*editing, 145*

*notifications, 145*

*removing from calendar, 143-144*

*searching, 144*

*sharing, 144*

*task list, 143*

*vibration, 145*

Week view, 138

Year view, 136

calls

accepting, 106-107

answering, 65-66

Bluetooth devices, 106, 114

Calendar app, 107

call logs, 103

conference calls, 106, 111-112

contacts, 104, 107, 110

Direct Call gesture/motion, 7

earpiece, 4

emailing callers, 107

ending, 65

favorites (contacts), 104

holds, 106

incoming calls, 66

Internet browser, accessing, 107

listening to calls, 106

Lock screen

*answering calls from, 20*

*making calls from, 19*

*rejecting calls from, 20*

making calls

*conference calls, 111-112*

*contacts, 110*

*from Lock screen, 20*

*voice-dialing, 110-111*

memos, writing, 106

microphone, 6

missed calls, 109

muting, 8, 106

People Edge (S7 Edge), 81-82

Phone app

*configuring, 112-115*

*navigating, 102*

receiving, 105

*accepting calls, 106-107*

*missed calls, 109*

*rejecting calls, 107-108, 113*

rejecting, 107-108, 113

ringtones, 66, 114-115

speed dialing, 105

texting callers, 107-109

text senders, calling, 200

vibration, 66, 114-115

video calling, 103

voicemail, 115

VoLTE, 114

volume up/down buttons, 5

Wi-Fi Calling, 102, 115

Camera app, 4

aspect ratio, 246

automatic shutdown feature, 244

brightness, 245, 249-251, 287-288

Burst mode, 257

Camera Settings, 254-256

color effects, 248

configuring

*Basic Settings, 284*

*camera settings, 282-283*

- Camera Settings*, 254-256
  - Pro Settings*, 247-252, 285-289
  - Quick Settings*, 244-246
  - resetting settings*, 256
  - contrast, 245, 249-251, 287-288
  - DNG file format, 256
  - emailing pictures/video, 266
  - exposure, 251, 288
  - flash, 246
  - focus, 248, 253, 286
  - front camera, 243, 282
  - Grid Lines feature, 254
  - HDR setting, 245, 284
  - Help, 256
  - horizontal/vertical views, 244, 258
  - ISO icon, 249, 287
  - JPG file format, 256
  - launching, 5, 19
  - LED camera flash, 6
  - lighting, 245, 249-251, 287-288
  - location tags, 244, 255
  - metering, 251
  - motion, 260
  - Motion Photo slider, 254
  - Panorama mode, 253
  - pausing video, 281
  - Photo Editor, 264
  - previewing pictures, 254
  - Pro Settings*, 247-252
  - Quick Settings*, 244-246
  - RAW File slider, 256
  - rear camera, 243, 255, 282
  - recording video, 281
  - resetting settings, 256, 283
  - resolution, 282
  - reviewing pictures, 255-257
  - shutter lag, 260
  - Shutter Sound slider, 256
  - shutter speed, 250, 260
  - Shutter Speed icon, 288
  - Smart Stay feature, 74
  - taking pictures, 257, 260
  - taking video by voice, 283
  - timer, 246, 284
  - Tracking AF slider, 254
  - video effects, 284
  - Video Size, 282
  - Video Stabilization slider, 282
  - Virtual Shot mode, 253
  - voice, taking pictures by, 255
  - volume, adjusting in videos, 283
  - white balance, 249, 287
  - zooming in/out, 256
- cases, 356
- CC (Carbon Copy), email, 172
- cellular providers, contacting, 373
- Center-Weighted metering (Camera app), 252
- cleaning/maintenance, 356
- Clipboard, 31
- clocks, Night Clock, 74
- Close/Auto Focus (Camera app), 249
- closing apps, 33
- cloud storage apps, 312
- color
- Color Adjustment Wizard, 61
  - color effects (Camera app), 248
  - Grayscale feature (touchscreen), 61
  - Negative Colors feature (touchscreen), 61
- composing
- email
  - Email app*, 190-191, 195
  - Gmail*, 172-174
  - memos associated with callers, 106
  - messages (texts), 199, 203-205
  - web forms, filling in, 157
- Concert Hall feature (sound), 71
- conference calls, 106, 111-112
- configuring, first-time setup, 9
- backups, 13, 17
  - data transfers, 11
  - email, 11-12
  - EULA, 11
  - fingerprint reader/Home button, 14
  - geographical location, 13
  - IMAP accounts, 13
  - Lock screen, 16
  - passwords, 14
  - phone scanning, 13
  - POP accounts, 13
  - Samsung accounts, 17
  - Wi-Fi network connections, 9
- contacts
- Android Wear smartwatches, text recognition, 394
  - Contacts app, 117
    - account setup*, 118-119
    - adding contacts*, 120-124
    - backing up contacts*, 120
    - formatting contacts*, 121
    - linking contacts*, 126-127
    - searching for contacts*, 126
    - synchronizing contacts*, 120
    - unlinking contacts*, 128
    - updating contacts*, 125
    - using contacts*, 128-129
  - Gmail, 172
  - nicknames, 213
  - Phone app, 104, 107, 110
- context menus, 32
- Continuous Input. *See* Swiping/Sliding (gesture/motion)
- contrast (Camera app), 245, 249-251, 287-288

conversations (Gmail), 175-179

copying

- music files via Windows Media Player, 313-314
- pictures from web pages, 160-161
- text, 29-31, 159

cursor, placing in text, 30

customizing

- accessibility settings
  - answering/ending calls*, 65
  - dexterity/interaction*, 62-63
  - Direct Access menu*, 64
  - hearing*, 61
  - notification reminders*, 64
  - vision*, 59-61
  - voice*, 58-59
- alerts/notifications, 64-69
- audio, 66-67, 70-71
- Calendar, 66
- display settings, 73-75
- Edge Feeds (S7 Edge), 79
- Edge Lighting (S7 Edge), 80
- Edge Panels (S7 Edge), 76-78
- email, 66
- Email app, 194-197
- fonts (text), 60
- Gmail app, 178-179
  - accounts*, 180-181
  - IMAP accounts*, 182, 198
  - POP3 accounts*, 182, 198
- keyboards, 51-53, 56, 59-61
- language, 56
- Messages app, 201-202
- messaging, 66
- notifications/alerts, 64-69
- People Edge (S7 Edge), 81-82
- privacy/safety settings, 84
  - Private mode*, 85-86
  - Send SOS Messages feature*, 87-88
- reminders (notifications/alerts), 64
- S7 Edge
  - Edge Feeds*, 79
  - Edge Lighting*, 80
  - Edge Panels*, 76-78
  - People Edge*, 81-82
- screen, display settings, 73-75
- security, 84
  - Private mode*, 85-86
  - Send SOS Messages feature*, 87-88
- sound, 66-67, 70-71
- texting, 66
- themes, 88-89
- touchscreen display settings, 73-75
- volume, 66-67, 70-71

wallpaper, 51

- Gallery pictures*, 49
- live wallpaper*, 50

cutting text, 30

## D

daily step goals, tracking via S Health, 408-412

data restores

- Automatic Restore option, 323
- Google accounts, 322-323
- iTunes backups, 318
- manual backups, 323
- Samsung Smart Switch, 317-321

data storage

- cloud storage apps, 312
- Google Drive app, increasing storage space, 312
- Mass Storage USB mode, 315-317

data transfers

- Android File Transfer, 317
- Apple Mac data, 317
- first-time setup, 11
- Mass Storage USB mode, 315-316
- Wi-Fi Direct, 295-297

Data Usage Manager Edge Panel, 78

Day view (Calendar app), 137

delay sending texts, 204

deleting

- apps, 24
- bookmarks, 154-155
- email from Gmail app, 179
- music from Google Play Music app, 234
- pictures
  - Gallery*, 263
  - Image Viewer*, 259
- podcasts from BeyondPod podcast manager, 238, 241
- screen captures from Gallery, 267
- texts, 202
- video from Gallery, 290-291
- widgets from Home screen, 55

delivery reports (messaging/texting), 203

desktop computers, synchronizing with, 6

Device Administrators, 93

dexterity/interaction

- customizing settings, 62-63
- Direction Lock, 63
- Gesture Wake Up feature, 62

dictation (speech to text), 29-31. *See also* keyboards

Direct Access menu, accessibility settings, 64

Direct Call gesture/motion, 7

directions (Google Maps), getting, 216-220

display settings, customizing, 73-75

DNG file format, 256  
 Do Not Disturb feature, 71-72, 95  
 Double-Tapping gesture/motion, 25  
 Dragging gesture/motion, 24

## E

earpiece, 4  
 Easy Home Screen mode, 84  
 Easy Mute gesture/motion, 8  
 Edge Feeds (S7 Edge), 79  
 Edge Lighting (S7 Edge), 80  
 Edge Panels, 9S7 Edge)  
   accessing, 77  
   customizing, 76-78  
   Data Usage Manager, 78  
   Internet, 78  
   My Places, 78  
   Quick Tools, 78  
   Weather, 78  
   Yahoo! Finance, 78  
   Yahoo! Sports, 78  
 editing  
   bookmarks (websites), 154  
   pictures via Photo Editor (Camera app), 264  
   tasks (Calendar app), 145  
   text, 29-30  
   video via Gallery, 290-291  
 email  
   Android Wear smartwatches, 394-396  
   attachments  
     *Email app*, 191, 195  
     *Gmail*, 173-176  
     *inserting versus attaching*, 173  
     *sending pictures/video via Camera app*, 266  
     *sending pictures/video via Gallery*, 264-265  
   callers, emailing, 107  
   copying/pasting text, 29-31  
   cursor, placing in text, 30  
   customizing, 66  
   cutting text, 30  
   dictation, 29-31  
   editing text, 29-30  
   Email app  
     *adding accounts*, 183-186  
     *attachments*, 191, 195  
     *composing*, 190-191, 195  
     *corporate account settings*, 195-197  
     *customizing*, 194-197  
     *desktop/S7 conflicts*, 197  
     *IMAP accounts*, 186-189, 198  
     *Manual Setup*, 187-188  
     *navigating*, 190  
     *passwords*, 188

*permissions*, 192  
     *POP3 accounts*, 186-189, 198  
     *prioritizing email*, 192  
     *Priority Sender Inbox*, 195  
     *reading email*, 192-193  
     *RTF*, 191  
     *security*, 189, 192  
     *synchronizing accounts*, 195-197  
     *Trash folder*, 196  
     *usernames*, 188  
 emoticons, 31  
 first-time setup, 11-12  
 fonts, customizing, 60  
 footers, 181  
 Gmail, 163  
   *adding accounts*, 164-165  
   *archiving email*, 177  
   *attachments*, 173-176  
   *BCC*, 172  
   *CC*, 172  
   *composing*, 172-174  
   *Contacts*, 172  
   *conversations*, 175-179  
   *customizing*, 178-182  
   *deleting email*, 179  
   *footers*, 181  
   *General Settings screen*, 179  
   *IMAP accounts*, 166-169, 182  
   *important email*, 177  
   *Inbox*, 171, 180  
   *Insert from Drive links*, 173-174  
   *labels*, 171  
   *Manual Setup*, 167  
   *multiple accounts*, 166  
   *name lookups*, 172  
   *navigating*, 170-171  
   *PDF*, 177  
   *phishing scams*, 178  
   *POP3 accounts*, 166-169, 182  
   *printing email*, 177  
   *Priority Inbox*, 180  
   *reading email*, 175-176  
   *replying to email*, 175-176  
   *RTF*, 175  
   *setup*, 169  
   *signatures*, 181  
   *Spam*, 178  
   *starred email*, 171  
   *synchronizing accounts in S7*, 166  
 indicator light, 4  
 keyboard, 25  
   *accented characters*, 27  
   *alternartive characters*, 27  
   *changing settings*, 31  
   *copying/pasting text*, 29-31  
   *cursor placement in text*, 30

*customizing*, 51-53, 59-61  
*cutting text*, 30  
*editing text*, 29-30  
*emoticons*, 31  
*high contrast keyboards*, 60  
*landscape keyboard*, 28  
*next word suggestion*, 26  
*nonstandard keyboards*, 52  
*numbers*, 27  
*one-hand typing*, 31  
*Swiping/Sliding to Type*  
*(gesture/motion)*, 28  
*symbols*, 27  
 language, changing, 56  
 magnifying text, 60  
 next word suggestion (keyboard), 26  
 PDF, printing email as, 177  
 People Edge (S7 Edge), 81-82  
 pictures sending via  
   *Camera app*, 266  
   *Gallery*, 264-265  
 printing, 177  
 RTF, 175, 191  
 security, 169, 192  
 signatures, 181  
 speech-to-text, customizing, 58-59  
 video sending via  
   *Camera app*, 266  
   *Gallery*, 264, 265  
 Emergency mode, 6  
 emoticons, 31  
 ending calls, 65  
 episodes (podcasts), 237  
   deleting, 238  
   deleting feeds, 241  
   descriptions, 240  
   favorites, 238  
   filtering, 240  
   playing, 238  
   sharing, 238-240  
   sorting, 240  
   updating feeds, 240-241  
   video as audio, 240  
 Equalizer settings (sound), 70  
 EULA (End User Licensing Agreement), 11  
 events  
   Calendar app, 132-133  
     *private events*, 135  
     *reminders*, 134-136  
     *searching*, 144  
   messaging  
     *indicator light*, 4  
     *languages, changing*, 9  
     *Smart Alert gesture/motion*, 7  
 exposure (Camera app), 251, 288

## F

facial recognition, Smart Stay feature, 74  
 fast forwarding/rewinding  
   music in Google Play Music app, 233  
   video in Gallery, 291  
 favorites  
   Favorites tab (Phone app), 104  
   Favorites Tray (Home screen), 20  
   podcast episodes in BeyondPod podcast  
   manager, 238  
 file sharing  
   cloud storage apps, 312  
   Google Drive app  
     *adding files*, 302, 305  
     *increasing storage space*, 312  
     *menu options*, 309-311  
     *saving pictures*, 302, 305  
     *sharing files*, 307-309  
   music files, sharing via Windows Media  
   Player, 313-314  
   Wi-Fi Direct, 295  
     *configuring*, 296-297  
     *troubleshooting connections*, 297  
 file transfers, Android File Transfer  
   (Apple Mac), 38  
 Find My Mobile service, 91, 98-99. *See also*  
   Android Device Manager  
 fingerprint reader/Home button, 5, 14, 97  
 firmware, updating, 358  
 first-time setup, 9-10  
   backups, 13, 17  
   data transfers, 11  
   email, 11-12  
   EULA, 11  
   fingerprint reader/Home button, 14  
   geographical location, 13  
   IMAP accounts, 13  
   Lock screen, 16  
   passwords, 14  
   phone scanning, 13  
   POP accounts, 13  
   Samsung accounts, 17  
   Wi-Fi network connections, 9  
 fitness/health, 401  
   activity trackers  
     *adding/removing*, 404  
     *sleep*, 412-414  
     *step goals*, 408-412  
   Android Wear smartwatches, 380-381,  
   392-393  
   configuring, 402-404  
   heart rate sensor, 6  
   partner apps/settings, 415-416  
   resetting health data, 406-407  
   running programs, 416-417

- setting goals, 416-417
- synchronizing health data, 403-406
- flash
  - Camera app, 246
  - LED camera, 6
- Flipboard app, Briefing view, 21
- flowing text, Play Books app, 347
- focus (Camera app), 248, 253, 286
- folders
  - apps
    - App Folder (Home screen)*, 20, 23
    - creating*, 23
  - Gmail folders. *See* labels
- fonts (text), customizing, 60
- footers (email), Gmail, 181
- force-stopping apps, 367
- foreign currencies in Google Play, 329
- forms (web), 157
- free apps
  - Galaxy Apps Store, 336-337
  - Google Play Store, 328
- front camera, 4, 243, 282
  - launching, 5
  - Smart Stay feature, 74

## G

---

- Galaxy Apps Store, 335
  - apps
    - free apps*, 336-337
    - installing*, 336-339
    - purchasing*, 337-338
  - payment methods, 336
- Gallery
  - albums, 262, 289
  - pictures
    - deleting*, 263
    - emailing*, 264-265
    - managing*, 261-263
    - resizing*, 265
    - searching*, 262
    - sharing*, 263-264
  - screen captures, 266-267
  - slideshows, 289
  - video
    - adjusting volume*, 290
    - deleting*, 290-291
    - editing*, 290-291
    - managing*, 262
    - playing*, 292
    - reviewing*, 281
    - rewarding/fast forwarding*, 291
    - searching*, 262
    - sharing*, 290-292

- subtitles*, 292
- viewing details*, 289, 292
- wallpaper, 49
- geographical location, first-time setup, 13
- gestures/motions
  - Android Wear smartwatches, 391
  - Direct Call, 7
  - Direction Lock, 63
  - Double-Tapping, 25
  - Dragging, 24
  - Easy Mute, 8
  - Gesture Wake Up feature, 62
  - Palm Swipe to Capture, 8
  - Pinching, 25, 151-152
  - Pop-up View, 8
  - proximity/gesture sensor, 4
  - Rotating the Screen, 25
  - Smart Alert, 7
  - Swipe-to-Unlike, 19
  - Swipe Up, 68-69
  - Swiping/Sliding, 24, 28
  - Tapping, 24-25
  - Touch and Hold, 24
  - vibration feedback, 63
- Gmail, 163
  - accounts
    - adding*, 164-165
    - customizing*, 180-182
    - IMAP accounts*, 166-169, 182
    - Manual Setup*, 167
    - multiple accounts*, 166
    - POP3 accounts*, 166-169, 182
    - synchronizing in S7*, 166
  - archiving email, 177
  - attachments, 173-176
  - BCC, 172
  - CC, 172
  - composing, 172-174
  - Contacts, 172
  - conversations, 175-179
  - customizing
    - accounts*, 180-181
    - Gmail app*, 178-179
    - IMAP accounts*, 182
    - POP3 accounts*, 182
  - deleting email, 179
  - footers, 181
  - General Settings screen, 179
  - important email, 177
  - Inbox, 171, 180
  - Insert from Drive links, 173-174
  - labels, 171
  - name lookups, 172
  - navigating, 170-171
  - PDF, 177
  - phishing scams, 178

- printing email, 177
- Priority Inbox, 180
- reading email, 175-176
- replying to email, 175-176
- RTF, 175
- setup, 169
- signatures, 181
- Spam, 178
- starred email, 171
- goals (fitness), setting in S Health, 416-417
- Google accounts, data backups/restores, 322-323
- Google Cloud Print, 177, 301
- Google Drive app
  - files
    - adding, 302, 305
    - sharing, 307-309
  - increasing storage space, 312
  - menu options, 309-311
  - pictures, saving, 302, 305
- Google Hangouts, texting in, 207
- Google Maps, 214
  - Bluetooth devices, 222
  - configuring, 220-222
  - directions, getting, 216-220
  - Google Maps Micro app, 379
  - navigating, 215-216
  - offline usage, 222-223
  - public transportation options, 218
- Google Music Manager (Apple Mac)
  - configuring, 42-45
  - installing, 39-40
- Google Music Manager (Windows)
  - configuring, 42-45
  - installing, 41
- Google Now, 209-210
  - configuring, 211-214
  - Google Maps, 214
  - languages, selecting, 212
  - launching, 5
  - list of commands, 211
  - nicknames, 213
  - Now on Tap feature, 214
  - S Voice versus, 110
  - speech recognition, 212
- Google Play Music app
  - Album Only status, 230
  - deleting music, 234
  - library, 233
  - Parental Advisory warnings, 227
  - pausing music, 232
  - playing music, 231
  - playlists, 234
  - purchasing music, 226-231
  - repeating music, 233

- rewinding/fast forwarding music, 233
- sharing music, 235
- shuffling music, 233
- Google Play Store
  - apps
    - foreign currencies and purchases, 329
    - free apps, 328
    - in-app purchases, 330
    - installing, 328, 339
    - managing, 332
    - permissions, 330-331
    - purchasing, 329-330
    - re-installing, 334
    - uninstalling, 333
    - updating, 332
  - configuring, 333-334
  - Google Wallet, 326
  - keyboards, 51-52
  - navigating, 326-327
  - Play Movies & TV app, 269
    - downloading TV shows, 270-272
    - playing TV shows, 273
    - playing videos, 275
    - purchasing movies, 273-275
  - Text-to-Speech services, 58
- Google Wallet, 326
- gray icons in Android Wear smartwatches, 380
- Grayscale feature (touchscreen), 61
- Grid Lines feature (Camera app), 254

## H

---

- haptic feedback. *See* vibration
- HDR (High Dynamic Range) setting (Camera app), 245, 284
- headphone jack (3.5mm), 6
- health/fitness, 401
  - activity trackers
    - adding/removing, 404
    - sleep, 412-414
    - step goals, 408-412
  - Android Wear smartwatches, 380-381, 392-393
  - configuring, 402-404
  - heart rate sensor, 6
  - partner apps/settings, 415-416
  - resetting health data, 406-407
  - running programs, 416-417
  - setting goals, 416-417
  - synchronizing health data, 403-406
- hearing calls
  - adjusting sound, 66-67, 70-71
  - changing settings, 61
  - earpiece, 4

- headphone jack (3.5mm), 6
- speaker, 6
- volume, 5, 106
- heart rate sensor, 6
- Help
  - Camera app, 256
  - screen captures, 267
  - technical help, 372-373
- hiding web pages, 157
- high contrast keyboards, 60
- History list (Internet app)
  - deleting bookmarks, 155
  - hiding pages, 157
  - returning to previously visited pages, 156
- hold, placing calls on, 106
- Home button/fingerprint reader, 5, 14, 97
- Home screen, 20
  - App Folder, 20, 23
  - App Shortcut, 20-24
  - Briefing view (Flipboard app), 21
  - Easy Home Screen mode, 84
  - Favorites Tray, 20
  - Launcher icon, 21
  - new panes, creating, 24
  - Notification bar, 20
  - Notification icons, 20
  - Quick Settings, 22
  - widgets, 20
    - adding to Home screen, 53-54*
    - moving on Home screen, 55*
    - removing from Home screen, 55*
    - resizing, 55*
- horizontal (landscape) view
  - apps, 369
  - Camera app, 244, 258
  - troubleshooting, 368
- HP ePrint app, 301
- IMAP accounts
  - Email app, 186-189, 198
  - first-time setup, 13
  - Gmail app, 166-169, 182
- importing accessibility settings, 65
- in-app purchases, 330
- Inbox (email), Gmail, 171, 180
- indicator light, 4
- interaction
  - customizing settings, 62-63
  - Direction Lock, 63
  - Gesture Wakeup feature, 62
  - touchscreen, 24-25
- Internet, access from calls, 107
- Internet app
  - bookmarks
    - creating, 153-154*
    - deleting, 154-155*
    - editing, 154*
    - synchronizing, 155*
  - History list
    - deleting bookmarks, 155*
    - hiding pages, 157*
    - returning to previously visited pages, 156*
  - links, 152
  - web browsing, 148, 156
  - web forms, 157
  - web pages
    - copying pictures, 160-161*
    - copying text, 159*
    - hiding pages, 157*
    - returning to previously visited pages, 156*
    - zooming in/out, 151-152*
  - web searches, 149-150
- Internet Edge Panel, 78
- ISO icon (Camera app), 249, 287
- iTunes backups, 318

## I

- Image Viewer, 292
  - albums, 259
  - pictures
    - deleting, 259*
    - previewing, 260*
    - reviewing, 258*
    - rotating, 259*
    - viewing details, 259*
  - navigating, 258-260
  - slideshows, 259
  - video
    - playing, 289*
    - reviewing, 281*
  - wallpaper, 259

## J-K

- JPG file format, 256
- keyboards, 25. *See also* dictation
  - accented characters, 27
  - alternative characters, 27
  - changing languages, 56
  - changing settings, 31
  - copying/pasting text, 29- 31
  - cursor, placing in text, 30
  - customizing, 51-53, 59-61
  - cutting text, 30
  - editing text, 29-30
  - emoticons, 31
  - high contrast keyboards, 60



landscape keyboard, 28  
 magnifying text, 60  
 next word suggestion, 26  
 nonstandard keyboards, 52  
 numbers, 27  
 one-hand typing, 31  
 Swiftkey Keyboard, 52-53  
 Swiping/Sliding to Type (gesture/motion), 28  
 symbols, 27

Kies. *See* Samsung, Samsung Smart Switch

## L

labels (Gmail), 171  
 landscape (horizontal) view  
   apps, 369  
   Camera app, 244, 258  
   troubleshooting, 368  
 landscape keyboard, 28  
 languages  
   Android Wear smartwatches, 376  
   changing, 9, 56  
   Google Now, selecting via, 212  
   translating text in Play Books app, 347  
 launching  
   apps, 21  
   Camera app, 5  
   Google Now, 5  
 LED camera flash, 6  
 library (Google Play Music app), 233  
 lighting  
   Android Wear smartwatches, 389  
   Camera app, 245, 249-251, 287-288  
 light sensor (brightness), 4  
 linking contacts, 126-127  
 links (web pages), 152  
 listening to calls  
   adjusting sound, 66-67, 70-71  
   changing settings, 61  
   earpiece, 4  
   headphone jack (3.5mm), 6  
   speaker, 6  
   volume, 5, 106  
 live wallpaper, 50  
 location (geographical), first-time setup, 13  
 location tags, 244, 255  
 Lock screen, 90-91  
   calls  
     *answering*, 20  
     *making*, 19  
     *rejecting*, 20  
   Camera, launching, 19  
   first-time setup, 16  
   texts, sending, 20  
   unlocking, 18

locked messages (texts), 199-200  
 locking Android Wear smartwatches, 391  
 logs (call), 103  
 LTE (Long-Term Evolution), VoLTE, 114

## M

magazines, Play Newstand app. *See also* books;  
 newspapers  
   Article mode, 351  
   navigating, 348  
   Page mode, 351  
   purchasing publications, 349-350  
   reading publications, 350-351  
   subscribing to publications, 349-350  
 magnifying text, 60  
 maintenance, 356  
 managing  
   accessibility settings, 65  
   apps, 332  
   calendars in Calendar app, 140  
   contacts in Contacts app, 117  
     *account setup*, 118-119  
     *adding contacts*, 120-124  
     *backing up contacts*, 120  
     *formatting contacts*, 121  
     *linking contacts*, 126-127  
     *searching for contacts*, 126  
     *synchronizing contacts*, 120  
     *unlinking contacts*, 128  
     *updating contacts*, 125  
     *using contacts*, 128-129  
   Messages app, 201-202  
   pictures/video in Gallery, 261-263  
 maps  
   Google Maps, 214  
     *Bluetooth devices*, 222  
     *configuring*, 220-222  
     *getting directions*, 216-220  
     *navigating*, 215-216  
     *offline usage*, 222-223  
     *public transportation options*, 218  
   Google Maps Micro app, 379  
 Mass Storage USB mode, 315-317  
 Matrix metering (Camera app), 252  
 MDM (Mobile Device Management), installing  
 apps, 335  
 memory  
   Android Wear smartwatches, 385  
   expanding, 6  
   SIM card tray, 6  
 menus  
   app menus, viewing, 32  
   context menus, 32

- Menu button, 5, 32
- navigating, 5
- website menus, 158
- messaging
  - Android Wear smartwatches, 394
  - attachments, 204-205
  - auto-retrieving MMS while roaming, 203
  - callers, messaging directly, 107-109
  - calling message sender, 200
  - composing messages, 199, 203-205
  - copying/pasting text, 29-31
  - cursor, placing in text, 30
  - customizing, 66
  - cutting text, 30
  - delay sending messages, 204
  - deleting messages, 202
  - delivery reports, 203
  - dictation, 29-31
  - editing text, 29-30
  - emoticons, 31
  - events
    - indicator light, 4*
    - languages, changing, 9*
    - Smart Alert gesture/motion, 7*
  - fonts, customizing, 60
  - Google Hangouts, 207
  - keyboard, 25
    - accented characters, 27*
    - alternative characters, 27*
    - changing settings, 31*
    - copying/pasting text, 29-31*
    - customizing, 51-53, 59-61*
    - cursor placement in text, 30*
    - cutting text, 30*
    - editing text, 29-30*
    - emoticons, 31*
    - high contrast keyboards, 60*
    - landscape keyboard, 28*
    - next word suggestion, 26*
    - nonstandard keyboards, 52*
    - numbers, 27*
    - one-hand typing, 31*
    - Swiping/Sliding to Type (gesture/motion), 28*
    - symbols, 27*
  - languages, changing, 9, 56
  - locked messages, 199-200
  - magnifying text, 60
  - Messages app
    - customizing, 201-202*
    - managing, 201-202*
    - navigating, 199-200*
  - MMS format, 199, 203-207
  - next word suggestion (keyboard), 26
  - People Edge (S7 Edge), 81-82
  - push messages, 202
  - Quick Reply (S7 Edge), 80-82
  - Quick Responses, 200
  - read reports, 203
  - receiving messages, 205-206
  - Send SOS Messages feature, 87-88
  - SIM Card messages, 203
  - Smart Alert gesture/motion, 7
  - SMS format, 199, 204-207
  - speech-to-text, customizing, 58-59
  - usable content in messages, 206
- metering (Camera app), 251
- Micro USB 2 port, 6
- microphone, 6
- microSD card tray, 6
- minimizing apps, 36
- missed calls, 109
- MMS (Multimedia Message Service) format, 199, 203-207
- model number (S7), finding, 373
- Month and Agenda view (Calendar app), 138-140
- Motion Photo slider (Camera app), 254
- motions/gestures
  - Android Wear smartwatches, 391
  - Direct Call, 7
  - Direction Lock, 63
  - Double-Tapping, 25
  - Dragging, 24
  - Easy Mute, 8
  - Gesture Wake Up feature, 62
  - Palm Swipe to Capture, 8
  - Pinching, 25, 151-152
  - Pop-up View, 8
  - proximity gesture sensor, 4
  - Rotating the Screen, 25
  - Smart Alert, 7
  - Swipe-to-Unlock, 19
  - Swipe Up, 68-69
  - Swiping/Sliding, 24, 28
  - Tapping, 24-25
  - Touch and Hold, 24
  - vibration feedback, 63
- movies/TV shows, Play Movies & TV app, 269
  - downloading TV shows, 270-272
  - playing
    - TV shows, 273*
    - videos, 275*
  - purchasing movies, 273-275
- moving widgets on Home screen, 55
- Multi Window mode, 34, 37
- music
  - adjusting, 66-67, 70-71
  - Concert Hall feature, 71
  - Equalizer settings, 70

- Google Music Manager (Apple Mac)
  - configuring*, 42-45
  - installing*, 39-40
- Google Music Manager (Windows)
  - configuring*, 42-45
  - installing*, 41
- Google Play Music app
  - Album Only status*, 230
  - deleting music*, 234
  - library*, 233
  - Parental Advisory warnings*, 227
  - pausing music*, 232
  - playing music*, 231
  - playlists*, 234
  - purchasing music*, 226-231
  - radio stations*, 233
  - repeating music*, 233
  - rewinding/fast forwarding music*, 233
  - sharing music*, 235
  - shuffling music*, 233
- listening to
  - earpiece*, 4
  - headphone jack (3.5mm)*, 6
  - speaker*, 6
  - volume up/down buttons*, 5
- playing on Android Wear smartwatches, 396-398
- surround sound, 70
- Tube Amp Pro feature, 70
- UHQ Upscaler settings, 70
- muting
  - calls, 8, 106
  - conversations (Gmail), 177-179
- My Places Edge Panel, 78

## N

---

- navigating
  - apps, 5
    - Home button/fingerprint reader*, 14, 97
    - Recent Apps button*, 33
  - Back button, 5
  - email
    - Email app*, 190
    - Gmail*, 170-171
  - Home button/fingerprint reader, 5, 14, 97
  - menus, 5
  - Messages app, 199-200
  - Phone app, 102
  - Play Books app, 342
  - Pop-up View gesture/motion, 8
  - Recent Apps button, 5, 33
- Negative Colors feature (touchscreen), 61

- networks
  - Smart Network Switch, 10
  - Wi-Fi networks, connecting to, 9
- newspapers, Play Newstand app. *See also* books; magazines
  - Article mode*, 351
  - navigating*, 348
  - Page mode*, 351
  - purchasing publications*, 349-350
  - reading publications*, 350-351
  - subscribing to publications*, 349-350
- next word suggestion (keyboard), 26
- NFC tags, 59
- nicknames, Google Now, 213
- Night Clock, 74
- noise-canceling microphone, 6
- nonstandard keyboards, 52
- notes
  - Android Wear smartwatches, taking in, 381, 393
  - Play Books app, taking in, 347
- notifications/alerts, 22
  - advanced settings, 68-69
  - Android Wear smartwatches, 380, 384, 388, 397
  - customizing, 66-69
  - Lock screen, 16, 19
  - Notification bar (Home screen), 20
  - reminders, customizing, 64
  - Swipe Up gesture/motion, 68-69
  - tasks (Calendar app), 145
- Now on Tap feature (Google Now), 214
- numbers, typing on keyboard, 27

## O

---

- OnCircle (S7 Edge), 83
- on-screen pattern (passwords), first-time setup, 14
- one-hand typing, 31
- Original pages, Play Books app, 347
- overheating battery, troubleshooting, 368

## P

---

- Page mode (Play Newstand app), 351
- Palm Swipe to Capture gesture/motion, 8
- panes (Home screen), creating, 24
- Panorama mode (Camera app), 253
- Parental Advisory warnings (music), 227
- passwords
  - Email app, 188
  - first-time setup, 14

- pausing
  - music via Google Play Music app, 232
  - video via Camera app, 281
- PDF (Portable Document Format), printing email as, 177
- People Edge (S7 Edge), customizing, 81-82
- permissions (apps), 330-331
- phishing scams, Gmail, 178
- Phone app
  - accepting calls, 106-107
  - Bluetooth devices, 106, 114
  - Calendar app, 107
  - call logs, 103
  - conference calls, 106, 111-112
  - configuring, 112-115
  - Contacts tab, 104, 107, 110
  - emailing callers, 107
  - Favorites tab, 104
  - hold, placing calls on, 106
  - Internet browser, accessing, 107
  - Lock screen
    - answering calls from*, 20
    - making calls from*, 19
    - rejecting calls from*, 20
  - making calls
    - conference calls*, 111-112
    - contacts*, 110
    - voice-dialing*, 110-111
  - memos, writing, 106
  - missed calls, 109
  - muting calls, 106
  - navigating, 102
  - receiving calls, 105
    - accepting calls*, 106-107
    - missed calls*, 109
    - rejecting calls*, 107-108, 113
  - rejecting calls, 107-108, 113
  - ringtones, 114-115
  - speed dialing, 105
  - texting callers, 107-109
  - vibrations, 114-115
  - video calling, 103
  - voicemail, 115
  - VoLTE, 114
  - volume, adjusting, 106
  - Wi-Fi Calling, 102, 115
- phone scanning, first-time setup, 13
- Photo Editor (Camera app), 264
- pictures/video
  - albums
    - Gallery*, 262, 289
    - Image Viewer*, 259
  - Camera app, 4
    - aspect ratio*, 246
    - automatic shutdown feature*, 244
    - Basic Settings*, 284
    - brightness*, 245, 249-251, 287-288
    - Burst mode*, 257
    - camera settings*, 282-283
    - Camera Settings*, 254-256
    - color effects*, 248
    - contrast*, 245, 249-251, 287-288
    - DNG file format*, 256
    - emailing pictures/video*, 266
    - exposure*, 251, 288
    - flash*, 246
    - focus*, 248, 253, 286
    - front camera*, 243, 282
    - Grid Lines feature*, 254
    - HDR setting*, 245, 284
    - Help*, 256
    - horizontal/vertical views*, 244, 258
    - ISO icon*, 249, 287
    - JPG file format*, 256
    - launching*, 5, 19
    - LED camera flash*, 6
    - lighting*, 245, 249-251, 287-288
    - location tags*, 244, 255
    - Lock screen, launching from*, 19
    - metering*, 251
    - motion*, 260
    - Motion Photo slider*, 254
    - Panorama mode*, 253
    - pausing video*, 281
    - Photo Editor*, 264
    - previewing pictures*, 254
    - Pro Settings*, 247-252, 285-289
    - Quick Settings*, 244-246
    - RAW File slider*, 256
    - rear camera*, 243, 282
    - recording video*, 281
    - resetting settings*, 256, 283
    - resolution*, 282
    - reviewing pictures*, 255-257
    - shutter lag*, 260
    - Shutter Sound slider*, 256
    - shutter speed*, 250, 260
    - Shutter Speed icon*, 288
    - Smart Stay feature*, 74
    - taking pictures*, 257, 260
    - taking video by voice*, 283
    - timer*, 246, 284
    - Tracking AF slider*, 254
    - video effects*, 284
    - Video Size*, 282
    - Video Stabilization slider*, 282
    - Virtual Shot mode*, 253
    - voice-activated picture-taking*, 255
    - volume in videos*, 283
    - white balance*, 249, 287
    - zooming in/out*, 256

- copying from web pages, 160-161
- deleting
  - Gallery, 263
  - Image Viewer, 259
- editing, Photo Editor (Camera app), 264
- emailing
  - Camera app, 266
  - Gallery, 264-265
- flash (LED camera), 6
- Gallery
  - adjusting volume in videos, 290
  - albums, 262, 289
  - deleting pictures/video, 263
  - deleting video, 290-291
  - editing video, 290-291
  - emailing pictures/video, 264-265
  - managing pictures/video, 261-263
  - playing video, 292
  - resizing pictures/video, 265
  - reviewing video, 281
  - rewinding/fast forwarding video, 291
  - screen captures, 266-267
  - searching pictures/video, 262
  - sharing pictures/video, 263-264
  - sharing video, 290-292
  - slideshows, 289
  - subtitles in video, 292
  - viewing video details, 289, 292
- horizontal/vertical views, 244, 258
- Image Viewer, 292
  - albums, 259
  - deleting pictures, 259
  - navigating, 258-260
  - playing videos, 289
  - previewing pictures, 260
  - reviewing pictures, 258
  - reviewing video, 281
  - rotating pictures, 259
  - slideshows, 259
  - viewing picture details, 259
  - wallpaper, 259
- motion, 260
- OnCircle (S7 Edge), 83
- Photo Editor (Camera app), 264
- Play Movies & TV app, 269
  - downloading TV shows, 270-272
  - playing TV shows, 273
  - playing videos, 275
  - purchasing movies, 273-275
- recording video, 6
- resizing via Gallery, 265
- saving to Google Drive app, 302, 305
- screen captures, 266-267
- screenshots, 8
- sharing via
  - Gallery, 263, 264
  - Windows Media Player, 313-314
- shutter lag, 260
- slideshows, 259
- taking pictures, 257, 260
- vertical/horizontal views, 244, 258
- video as audio in podcast feeds, 240
- video calling, 103
- Video Player, 293
- wallpaper
  - changing, 49-51
  - finding, 50
  - Gallery pictures, 49
  - live wallpaper, 50
  - previewing, 51
  - setting via Image Viewer, 259
  - Wallpaper Motion Effect, 48
- YouTube, 276-280
- Pinching gesture/motion, 25, 151-152
- PIN (passwords), first-time setup, 14
- Play Books app
  - bookmarks, 346
  - customizing view, 346
  - downloading books, 343
- Flowing text, 347
- jumping to pages, 345
- navigating, 342
- Original pages, 347
- purchasing books, 342-343
- reading
  - book reviews, 343
  - books, 344
  - free book samples, 343
- saving books, 348
- searching
  - for books, 343
  - in books, 345
- sharing books, 344
- taking notes, 347
- translating text, 347
- Play Movies & TV app, 269
  - playing videos, 275
  - purchasing movies, 273-275
  - TV shows
    - downloading, 270-272
    - playing, 273
- Play Newstand app
  - Article mode, 351
  - navigating, 348
  - Page mode, 351
  - purchasing publications, 349-350
  - reading publications, 350-351
  - subscribing to publications, 349-350

## playing

- music via Google Play Music app, 231
- podcast episodes from BeyondPod podcast manager, 238

TV shows via Play Movies & TV app, 273

## video

- Gallery*, 292
- Image Viewer*, 289
- Play Movies & TV app*, 275
- Video Player*, 293
- YouTube*, 276-280

playlists (Google Play Music app), 234

podcasts and BeyondPod podcast manager, 235

## episodes, 237

- deleting*, 238
- descriptions*, 240
- favorites*, 238
- filtering*, 240
- playing*, 238
- sharing*, 238-240
- sorting*, 240
- video as audio*, 240

## feeds

- deleting*, 241
- updating*, 240-241

## POP accounts

first-time setup, 13

## POP3 accounts

- Email app*, 186-189, 198
- Gmail app*, 166-169, 182

Pop-up view gesture/motion, 8

portrait (vertical) view, 244, 258, 368

Power button, 5

## power usage

Android Wear smartwatches, 384-385

extending, 358-359

- battery does not charging*, 368
- overheating battery*, 368
- Power Saving Mode*, 363-364
- screen brightness*, 360
- Sleep mode*, 361
- turning Bluetooth off*, 362
- turning Wi-Fi off*, 361
- Ultra Power Saving Mode*, 364-365

## previewing pictures

- Camera app, 254
- Image Viewer, 260

## printing

- Bluetooth printers, 299-300
- email, 177
- Google Cloud Print, 177, 301
- HP ePrint app, 301
- print apps, downloading, 301
- PrinterShare Mobile Print, 301
- Wi-Fi printers, 298-299

## prioritizing email, 192

- Priority Inbox (Gmail), 180
- Priority Sender Inbox (Email app), 195

## privacy/safety

- Android Device Manager, 99
- customizing, 84-88
- Device Administrators, 93
- Do Not Disturb feature, 71-72, 95
- Find My Mobile service, 91, 98-99
- Lock screen, 90-91
- private events (Calendar app), 135
- Private mode, 85-86
- Screen Pinning, 94-96
- SD cards, 92
- Send SOS Messages feature, 87-88
- SIM cards, 92
- Smart Lock, 95
- Trust Agents, 94-95

## proximity/gesture sensor, 4

public transportation options, viewing in Google Maps, 218

## purchasing

- accessories, 354
- apps
  - Galaxy Apps Store*, 337-338
  - Google Play Store*, 329-330
- books via Play Books app, 342-343
- movies via Play Movies & TV app, 273-275
- music via Google Play Music app, 226-231
- publications in Play Newstand app, 349-350

push messages, 202

---

**Q**


---

Quick Reply (S7 Edge), 80-82

Quick Responses (texts), 200

Quick Settings, 22

Quick Tools Edge Panel, 78

---

**R**


---

radio stations (personal), Google Play Music app, 233

range (Wi-Fi), checking, 370

RAW File slider (Camera app), 256

read reports (messaging/texting), 203

reading via Play Books app

- book reviews, 343

- books, 344

- free book samples, 343

rear camera, 6, 243, 255, 282

Recent Apps button, 5, 33

recording video via Camera app, 281

rejecting calls, 20, 107-108, 113

reminders

Android Wear smartwatches, 393

Calendar app, 134-136

customizing, 64

removing

apps, 24

bookmarks, 154-155

email from Gmail app, 179

music from Google Play Music app, 234

pictures

*Gallery*, 263

*Image Viewer*, 259

podcasts from BeyondPod podcast manager, 238, 241

screen captures from Gallery, 267

texts, 202

video from Gallery, 290-291

widgets from Home screen, 55

repositioning widgets on Home screen, 55

resetting

Camera app settings, 283

routers, 370

S7, 370-372

resizing

pictures/video via Gallery, 265

widgets, 55

resolution (Camera app), 282

restoring data

Automatic Restore option, 323

Google accounts, 322-323

iTunes backups, 318

manual backups, 323

Samsung Smart Switch, 317-321

reviewing

pictures via

*Camera app*, 255-257

*Image Viewer*, 258

video via

*Gallery*, 281

*Image Viewer*, 281

reviews (books), reading via Play Books app, 343

rewinding/fast forwarding

music in Google Play Music app, 233

video in Gallery, 291

ringtones, 66, 114-115

rotating

pictures in Image Viewer, 259

Rotating the Screen gesture/motion, 25

routers, resetting, 370

RTF (Rich Text Formatting), email, 175, 191

running programs (fitness) and S Health, 416-417

## S

S Health, 401

activity trackers

*adding/removing*, 404

*sleep*, 412-414

*step goals*, 408-412

configuring, 402-404

heart rate sensor, 6

partner apps/settings, 415-416

resetting health data, 406-407

running programs, 416-417

setting goals, 416-417

synchronizing health data, 403-406

S Voice versus Google Now, 110

S7 Edge

customizing, 76-82

Edge Feeds, 79

Edge Lighting, 80

Edge Panels

*accessing*, 77

*customizing*, 76-78

*Data Usage Manager*, 78

*Internet*, 78

*My Places*, 78

*Quick Tools*, 78

*Weather*, 78

*Yahoo! Finance*, 78

*Yahoo! Sports*, 78

OnCircle, 83

People Edge, 81-82

Quick Reply, 80-82

safety/privacy

Android Device Manager, 99

customizing, 84-88

Device Administrators, 93

Do Not Disturb feature, 71-72, 95

Find My Mobile service, 91, 98-99

Lock screen, 90-91

private events (Calendar app), 135

Private mode, 85-86

Screen Pinning, 94-96

SD cards, 92

Send SOS Messages feature, 87-88

SIM cards, 92

Smart Lock, 95

Trust Agents, 94-95

Samsung

accounts, 17

Samsung Smart Switch

*data backups/restores*, 317-321

*iTunes backups*, 318

*synchronizing data*, 317-321

website, 373

- saving
  - books in Play Books app, 348
  - pictures/video to Google Drive app, 302, 305
- screen
  - Adaptive Display feature, 75
  - Always On Display feature, 74
  - brightness
    - adjusting*, 73, 360
    - light sensor*, 4
    - Quick Settings*, 360
  - captures, Gallery, 266-267
  - Direction Lock, 63
  - display settings, customizing, 73-75
  - Double-Tapping gesture/motion, 25
  - Dragging gesture/motion, 24
  - Grayscale feature, 61
  - interacting with, 24-25
  - Negative Colors feature, 61
  - Night Clock, 74
  - Pinching gesture/motion, 25
  - Rotating the Screen gesture/motion, 25
  - Screen Pinning, 94-96
  - Screen Rotation, troubleshooting, 368
  - screensavers, 75
  - screenshots, 8
  - sleep settings, adjusting, 73
  - Smart Stay feature, 74
  - Swiping/Sliding gesture/motion, 24, 28
  - Tapping gesture/motion, 24-25
  - Touch and Hold gesture/motion, 24
  - troubleshooting, 366
- SD cards, security, 92
- searching
  - books via Play Books app, 343-345
  - contacts in Contacts app, 126
  - events (Calendar app), 144
  - pictures/video in Gallery, 262
  - tasks (Calendar app), 144
  - web searches via Internet app, 149-150
- security
  - Android Device Manager, 99
  - Bluetooth devices, 356
  - Device Administrators, 93
  - Do Not Disturb feature, 71-72, 95
  - email, 169
    - Email app*, 189, 192
    - Gmail*, 178
    - phishing scams*, 178
    - Spam*, 178
  - Find My Mobile service, 91, 98-99
  - first-time setup, 14
  - Gmail, 169
  - Lock screen, 90-91
  - passwords, first-time setup, 14
  - privacy/safety settings
    - customizing*, 84-88
    - Private mode*, 85-86
    - Send SOS Messages feature*, 87-88
  - Screen Pinning, 94-96
  - SD cards, 92
  - SIM cards, 92
  - Smart Lock, 95
  - Trust Agents, 94-95
  - Selective Focus mode (Camera mode), 253
- sending texts, delayed, 204
- setup (first-time), 9
  - backups, 13, 17
  - data transfers, 11
  - email, 11-12
  - EULA, 11
  - fingerprint reader/Home button, 14
  - geographical location, 13
  - IMAP accounts, 13
  - Lock screen, 16
  - passwords, 14
  - phone scanning, 13
  - POP accounts, 13
  - Samsung accounts, 17
  - Wi-Fi network connections, 9
- sharing
  - books via Play Books app, 344
  - data
    - Android File Transfer*, 317
    - Apple Mac data*, 317
    - cloud storage apps*, 312
    - Google Drive app*, 302, 305-312
    - Mass Storage USB mode*, 315-316
    - music, sharing via Windows Media Player*, 313-314
    - Wi-Fi Direct*, 295-297
  - music via Google Play Music app, 235
  - pictures via Gallery, 263-264
  - podcast episodes in BeyondPod podcast manager, 238-240
  - video via Gallery, 290-292
- shortcuts (apps)
  - App Shortcut (Home screen), 20-24
  - creating, 22
  - removing, 24
- shuffling music via Google Play Music app, 233
- shutter lag and Camera app, 260
- Shutter Sound slider (Camera app), 256
- shutter speed (Camera app), 250, 260, 288
- signatures (email), 181
- SIM Cards
  - messages, 203
  - security, 92
  - tray, 6



## sleep

- Sleep mode, 361
- sleep settings (touchscreen), adjusting, 73
- tracking via S Health, 412-414

## slideshowes

- Gallery, 289
- Image Viewer, 259

## Sliding/Sliping gesture/motion, 24, 28

## Smart Alert gesture/motion, 7

## Smart Lock, 95

## Smart Network Switch, 10

## Smart Stay feature, 74

smartwatches. *See* Android Wear smartwatchessmiley faces. *See* emoticons

## SMS (Short Message Service) format, 199, 204-207

## software, updating, 357-358

## sound

- adjusting, 66-67, 70-71
- Concert Hall feature, 71
- Do Not Disturb feature, 71-72, 95
- Equalizer settings, 70
- surround sound, 70
- Tube Amp Pro feature, 70
- UHQ Upscaler settings, 70

## Spam (email), 178

## speaker, 6

## speech

- Android Wear smartwatch actions, 379-381, 384, 392-396
- pictures, taking by speech, 255
- speech recognition, Google Now, 212
- speech-to-text (dictation), 29-31
  - customizing*, 58-59
  - Voice Assistant*, 58-59
  - Voice Label*, 59
- video, taking by speech, 283
- voice-dialing
  - Google Now versus S Voice*, 110
  - using apps during calls*, 111

## voicemail, 115

## speed dialing, 105

## split screen mode (apps), 33-35

## Spot metering (Camera app), 252

## stabilizing video in Camera app, 282

## starred emails (Gmail), 171

## step goals, tracking via S Health, 408-412

## stopwatch in Android Wear smartwatches, 380, 393

## storing data

- cloud storage apps, 312
- Google Drive app, increasing storage space, 312
- Mass Storage USB mode, 315-316

## subscribing to publications in Play Newstand app, 349-350

## subtitles (video), Gallery, 292

## surround sound, 70

## Swiftkey Keyboard, 52-53

## Swipe Up gesture/motion, notifications/alerts, 68-69

## Swipe-to-Unlock gesture/motion, 19

## Swiping (gestures/motions)

- Direct Call, 7
- Easy Mute, 8
- Palm Swipe to Capture, 8
- Pop-up View, 8
- proximity/gesture sensor, 4
- Smart Alert, 7

## Swiping/Sliding gesture/motion, 24, 28

## symbols, typing on keyboard, 27

## synchronization

- Google Music Manager (Apple Mac)
  - configuring*, 42-45
  - installing*, 39-40

## Google Music Manager (Windows)

- configuring*, 42-45
- installing*, 41

## synchronizing

- ActiveSync server, 184
- Android File Transfer (Apple Mac), 38
- apps, Android Wear smartwatch apps with
  - S7, 385
- bookmarks (websites), 155
- contacts in Contacts app, 120
- data
  - Mass Storage USB mode*, 315-316
  - Samsung Smart Switch*, 317-321
  - Wi-Fi Direct*, 295-297

## email

- Email app*, 195-197
- Gmail accounts in S7*, 166
- Google Music Manager (Apple Mac)
  - configuring*, 42-45
  - installing*, 39-40

## Google Music Manager (Windows)

- configuring*, 42-45
- installing*, 41

## phone/desktop computers, Micro USB 2 port, 6

## S Health and health data, 403-406

---

**T**

## Tapping gesture/motion, 24-25

## tasks (Calendar app)

- adding to calendar, 141-143
- editing, 145

- notifications, 145
- removing from calendar, 143-144
- searching, 144
- sharing, 144
- task list, 143
- vibration, 145
- technical help, 372-373
- texting
  - Android Wear smartwatches, 394
  - attachments, 204-205
  - auto-retrieving MMS while roaming, 203
  - callers, texting directly, 107-109
  - calling text sender, 200
  - composing texts, 199, 203-205
  - copying/pasting text, 29-31
  - cursor, placing in text, 30
  - customizing, 66
  - cutting text, 30
  - delay sending texts, 204
  - deleting texts, 202
  - delivery reports, 203
  - dictation, 29-31
  - editing text, 29-30
  - emoticons, 31
  - fonts, customizing, 60
  - Google Hangouts, 207
  - keyboards, 25
    - accented characters, 27*
    - alternative characters, 27*
    - changing settings, 31*
    - copying/pasting text, 29-31*
    - cursor placement in text, 30*
    - customizing, 51-53, 59-61*
    - cutting text, 30*
    - editing text, 29-30*
    - emoticons, 31*
    - high contrast keyboards, 60*
    - landscape keyboard, 28*
    - next word suggestion, 26*
    - nonstandard keyboards, 52*
    - numbers, 27*
    - one-hand typing, 31*
    - Swiping/Sliding to Type (gesture/motion), 28*
    - symbols, 27*
  - languages, changing, 9, 56
  - Lock screen, sending texts from, 20
  - locked texts, 199-200
  - magnifying text, 60
  - Messages app
    - customizing, 201-202*
    - managing, 201-202*
    - navigating, 199-200*
  - MMS format, 199, 203-207
  - next word suggestion (keyboard), 26
  - People Edge (S7 Edge), 81-82
  - push texts, 202
  - Quick Reply (S7 Edge), 80-82
  - Quick Responses, 200
  - read reports, 203
  - receiving texts, 205-206
  - SIM Card texts, 203
  - SMS format, 199, 204-207
  - speech-to-text, customizing, 58-59
  - usable content in texts, 206
- Theater mode (Android Wear smartwatches), 389
- themes, customizing, 88-89
- timer (Camera app), 246, 284
- timers, Android Wear smartwatches, 395
- Together feature (Android Wear smartwatches), 384, 399
- Touch and Hold gesture/motion, 24
- touchscreen
  - Adaptive Display feature, 75
  - Always On Display feature, 74
  - brightness
    - adjusting, 73, 360*
    - light sensor, 4*
    - Quick Settings, 360*
  - Direction Lock, 63
  - display settings, customizing, 73-75
  - Double-Tapping gesture/motion, 25
  - Dragging gesture/motion, 24
  - Grayscale feature, 61
  - interacting with, 24-25
  - Negative Colors feature, 61
  - Night Clock, 74
  - Pinching gesture/motion, 25
  - Rotating the Screen gesture/motion, 25
  - Screen Pinning, 94-96
  - Screen Rotation, troubleshooting, 368
  - screensavers, 75
  - sleep settings, adjusting, 73
  - Smart Stay feature, 74
  - Swiping/Sliding gesture/motion, 24, 28
  - Tapping gesture/motion, 24-25
  - Touch and Hold gesture/motion, 24
  - troubleshooting, 366
- trackers (activity), S Health
  - adding/removing, 404
  - sleep, 412-414
  - step goals, 408-412
- Tracking AF slider (Camera app), 254
- transferring
  - data
    - Android File Transfer, 317*
    - Apple Mac data, 317*
    - first-time setup, 11*
    - Mass Storage USB mode, 315-316*
    - Wi-Fi Direct, 295-297*

- files, Android File Transfer (Apple Mac), 38
- music
  - Google Music Manager (Apple Mac)*, 39-45
  - Google Music Manager (Windows)*, 41-45
- translating text in Play Books app, 347
- Trash folder (Email app), 196
- troubleshooting
  - battery life, 358-359
    - battery does not charge*, 368
    - overheating*, 368
    - Power Saving Mode*, 363-364
    - screen brightness*, 360
    - Sleep mode*, 361
    - turning Bluetooth off*, 362
    - turning Wi-Fi off*, 361
    - Ultra Power Saving Mode*, 364-365
  - Camera app, 256
  - force-stopping apps, 367
  - landscape (horizontal) orientation, 368
  - maintenance, 356
  - overheating, 368
  - routers, resetting, 370
  - S7, resetting, 370-372
  - screen captures, 267
  - Screen Rotation, 368
  - technical help, 372-373
  - touchscreen, 366
  - turning S7 on/off, 366
  - Wi-Fi, 297-299
    - checking activation*, 369
    - checking range*, 370
    - resetting routers*, 370
- Trust Agents, 94-95
- Tube Amp Pro feature (sound), 70
- turning on/off
  - Bluetooth devices, 362
  - Power button, 5
  - S7, 366
  - Wi-Fi, 361
- TV shows/movies, Play Movies & TV app, 269
  - downloading TV shows, 270-272
  - playing
    - TV shows*, 273
    - videos*, 275
  - purchasing movies, 273-275
- typing (one-hand), 31

## U

- UHQ Upscaler settings (sound), 70
- Ultra Power Saving Mode, 364-365
- UMA (Universal Media Access). *See* Wi-Fi, Wi-Fi Calling
- unlinking contacts, 128
- unlocking phone, 18

- updating
  - Android Wear smartwatches, 391
  - apps, 332
  - contacts, 125
  - firmware, 358
  - podcast feeds in BeyondPod podcast manager, 240-241
  - software, 357-358
- URL (Uniform Resource Locators), browsing to via Internet app, 148
- USB (Universal Serial Bus), Micro USB 2 port, 6

## V

- vertical (portrait) view, 244, 258, 368
- vibration
  - alerts/notifications, 64
  - apps, 67
  - calls, 114-115
  - Do Not Disturb feature, 71-72, 95
  - gestures/motions, 63
  - incoming calls, 66
  - notifications/alerts, 64-66
  - reminders (notifications/alerts), 64-66
  - tasks (Calendar app), 145
- video/pictures
  - albums
    - Gallery*, 262, 289
    - Image Viewer*, 259
  - Camera app, 4
    - aspect ratio*, 246
    - automatic shutdown feature*, 244
    - Basic Settings*, 284
    - brightness*, 245, 249-251, 287-288
    - Burst mode*, 257
    - camera settings*, 282-283
    - Camera Settings*, 254-256
    - color effects*, 248
    - contrast*, 245, 249-251, 287-288
    - DNG file format*, 256
    - emailing pictures/video*, 266
    - exposure*, 251, 288
    - flash*, 246
    - focus*, 248, 253, 286
    - front camera*, 243, 282
    - Grid Lines feature*, 254
    - HDR setting*, 245, 284
    - Help*, 256
    - horizontal/vertical views*, 244, 258
    - ISO icon*, 249, 287
    - JPG file format*, 256
    - launching*, 5, 19
    - LED camera flash*, 6
    - lighting*, 245, 249-251, 287-288
    - location tags*, 244, 255

- Lock screen, launching from, 19
- metering, 251
- motion, 260
- Motion Photo slider, 254
- Panorama mode, 253
- pausing video, 281
- Photo Editor, 264
- previewing pictures, 254
- Pro Settings, 247-252, 285-289
- Quick Settings, 244-246
- RAW File slider, 256
- rear camera, 243, 282
- recording video, 281
- resetting settings, 256, 283
- resolution, 282
- reviewing pictures, 255-257
- shutter lag, 260
- Shutter Sound slider, 256
- shutter speed, 250, 260
- Shutter Speed icon, 288
- Smart Stay feature, 74
- taking pictures, 257, 260
- taking video by voice, 283
- timer, 246, 284
- Tracking AF slider, 254
- video effects, 284
- Video Size, 282
- Video Stabilization slider, 282
- Virtual Shot mode, 253
- voice-activated picture-taking, 255
- volume in videos, 283
- white balance, 249, 287
- zooming in/out, 256
- copying from web pages, 160-161
- deleting
  - Gallery, 263
  - Image Viewer, 259
- editing, Photo Editor (Camera app), 264
- emailing
  - Camera app, 266
  - Gallery, 264-265
- flash (LED camera), 6
- Gallery
  - adjusting volume in videos, 290
  - albums, 262, 289
  - deleting pictures/video, 263
  - deleting video, 290-291
  - editing video, 290-291
  - emailing pictures/video, 264-265
  - managing pictures/video, 261-263
  - playing video, 292
  - resizing pictures/video, 265
  - reviewing video, 281
  - rewinding/fast forwarding video, 291
  - screen captures, 266-267
  - searching pictures/video, 262
  - sharing pictures/video, 263-264
  - sharing video, 290-292
  - slideshows, 289
  - subtitles in video, 292
  - viewing video details, 289, 292
- horizontal/vertical views, 244, 258
- Image Viewer, 292
  - albums, 259
  - deleting pictures, 259
  - navigating, 258-260
  - playing videos, 289
  - previewing pictures, 260
  - reviewing pictures, 258
  - reviewing video, 281
  - rotating pictures, 259
  - slideshows, 259
  - viewing picture details, 259
  - wallpaper, 259
- motion, 260
- OnCircle (S7 Edge), 83
- Photo Editor (Camera app), 264
- Play Movies & TV app, 269
  - downloading TV shows, 270-272
  - playing TV shows, 273
  - playing videos, 275
  - purchasing movies, 273-275
- recording video, 6
- resizing via Gallery, 265
- saving to Google Drive app, 302, 305
- screen captures, 266-267
- screenshots, 8
- sharing via
  - Gallery, 263, 264
  - Windows Media Player, 313-314
- shutter lag, 260
- slideshows, 259
- taking pictures, 257, 260
- vertical/horizontal views, 244, 258
- video as audio in podcast feeds, 240
- video calling, 103
- Video Player, 293
- wallpaper
  - changing, 49-51
  - finding, 50
  - Gallery pictures, 49
  - live wallpaper, 50
  - previewing, 51
  - setting via Image Viewer, 259
  - Wallpaper Motion Effect, 48
- YouTube, 276-280
- Virtual Shot mode (Camera app), 253
- voice
  - Android Wear smartwatch actions, 379-381, 384, 392-396
  - pictures, taking by voice, 255
  - video, taking by voice, 283

- voice-dialing, 110-111
- voice-to-text (dictation), 29-31
  - customizing*, 58-59
  - Voice Assistant*, 58-59
  - Voice Label*, 59
- voicemail, 115
- voice recognition, Google Now, 212
- VoLTE (Voice over Long-Term Evolution), 114
- volume
  - adjusting, 66-67, 70-71
  - calls, 106
  - videos, adjusting in, 283, 290
  - volume buttons, 5, 256

## W

---

- wallpaper
  - changing, 48-51
  - finding, 50
  - Gallery pictures, 49
  - live wallpaper, 50
  - previewing, 51
  - setting via Image Viewer, 259
  - Wallpaper Motion Effect, 48
- watches. *See* Android Wear smartwatches
- Weather Edge Panel, 78
- web browsing via Internet app, 148, 156
- web forms, 157
- web pages
  - copying
    - pictures*, 160-161
    - text*, 159
  - hiding pages, 157
  - links, 152
  - returning to previously visited pages, 156
  - zooming in/out, 151-152
- web searches via Internet app, 149-150
- websites
  - bookmarks
    - creating*, 153-154
    - deleting*, 154-155
    - editing*, 154
    - synchronizing*, 155
  - menus, 158
- Week view (Calendar app), 138
- white balance (Camera app), 249, 287
- widgets. *See also* apps
  - Easy Home Screen mode, 84
  - Home screen
    - adding widgets to*, 53-54
    - moving widgets*, 55
    - removing widgets from*, 55
    - resizing widgets*, 55

- Wi-Fi
  - first time setup, 9
  - network connections, 9
  - printing, 298
    - Bluetooth printers*, 299-300
    - downloading print apps*, 301
    - Google Cloud Print*, 301
    - HP ePrint app*, 301
    - PrinterShare Mobile Print*, 301
    - Wi-Fi printers*, 298-299
  - Quick Settings, 361
  - Smart Network Switch, 10
  - troubleshooting
    - checking activation*, 369
    - checking range*, 370
    - connections*, 297-299
    - resetting routers*, 370
  - turning on/off, 361
  - Wi-Fi Alliance, 297
  - Wi-Fi Calling, 102, 115
  - Wi-Fi Direct, 295
    - configuring*, 296-297
    - troubleshooting connections*, 297
- Windows
  - Google Music Manager
    - configuring*, 42-45
    - installing*, 41
  - Windows Media Player, music
    - copying*, 313-314
    - sharing*, 313-314
- writing
  - email
    - Email app*, 190-191, 195
    - Gmail*, 172-174
  - memos associated with callers, 106
  - messages (texts), 199, 203-205
  - web forms, filling in, 157

## Y

---

- Yahoo! Finance Edge Panel, 78
- Yahoo! Sports Edge Panel, 78
- Year view (Calendar app), 136
- YouTube, 276-280

## Z

---

- zooming in/out
  - Camera app, 256
  - web pages, 151-152